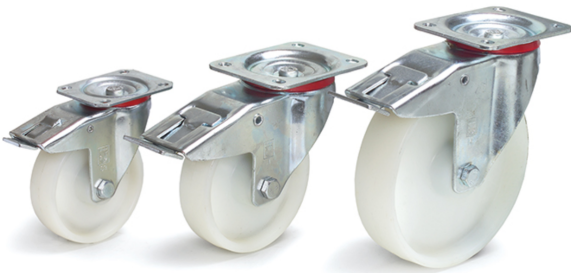



Transport equipment

Product data sheet

Article no.: 71513 Swivel castor with lock

Casings made of steel sheet, galvanized. polyamide wheels, hubs with roller bearings. Largely resisting to humidity, salt, acids and caustic solutions. Temperature-resistant from -40° to +90° C.



Technical Details:

Total load capacity (kg)	350
Wheel size (mm)	150 x 40
Tyres	Polyamide
Effective height (mm)	196
Mounting plate (mm)	135 x 110
Screw hole distances (mm)	105 x 75/80
Screw hole-Ø (mm)	11
Weight (kg)	2,62
Country of origin	China
Warranty (years)	10
Customs tariff number	73269098
GTIN	4017976715131