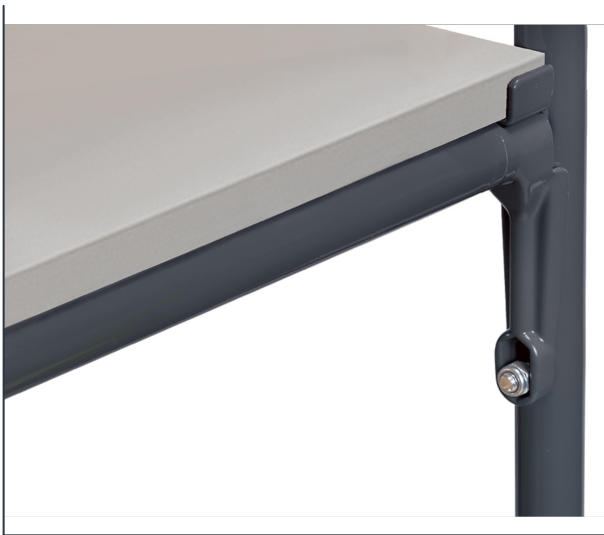



**Transport equipment**

## Product data sheet

Article no.: E8103VK/7016 Reinforcement struts "GREY EDITION"  
for shelved trolleys



These struts in anthracite grey are easily screwed under an existing shelf. That stabilises the upper structure and increases the capacity of the inserted shelves. The shelf located on top of the longitudinal connector struts has a carrying capacity of 150kg instead of 90kg due to the support. 1 pair per GREY EDITION trolley is included.

### Technical Details:



<b>Length of usable platform (mm)</b>	1200
<b>Width of usable platform (mm)</b>	800
<b>Total length (mm)</b>	1200
<b>Total width (mm)</b>	28
<b>Colour</b>	anthracite grey
<b>Weight (kg)</b>	3
<b>Country of origin</b>	Germany
<b>Warranty (years)</b>	10
<b>Customs tariff number</b>	87169090
<b>GTIN</b>	4017976244907