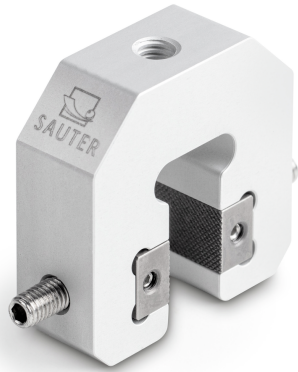


# KERN AE 500

# KERN

Quickly fittable universal screw tension clamp for tension and compression testing for a force range up to 500 N



## Category

Brand	Sauter
Product category	Force gauges
Product group	Screws and clamps

## Construction

Dimensions completely mounted (W×D×H)	51×41×15 mm
Material	aluminium
Material housing	aluminium

## Packing & Shipping

Readability force [d] (N)	1 d
Shipping method	Parcel service
Dimensions packaging (W×D×H)	51×41×15 mm
Net weight approx.	0,10 kg
Gross weight approx.	0,10 kg
Shipping weight	0,1 kg

## Piktogramme

### STANDARD



1 DAY