

VD 3800 SST

SAFETY BOOT EN ISO 20345:2011 S2 SRC CI HRO

SIZES: 36 - 48/49 (225 - 315) | FITTING OPTIONS: NB, XB (S, XXB)



S2 PROTECTION CLASS S2
according EN ISO 20345

4 ORIGINAL STEITZ MULTI-WIDTH SYSTEM
4 different widths per shoe size

SECURA VARIO® SYSTEM
weight dependent heel shock
absorption

AL ALUMINIUM TOE CAP
Toe cap made of aluminium

ESD
Protection against electrostatic
discharge

LEATHER-INSOLE

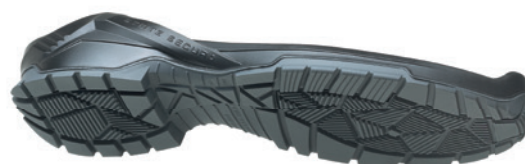
**DGUV
191** INSOLE TREATMENT
tested according to
DGUV Rule 112-191

FEATURES

- + Ultra-lightweight and smooth microfibre
- + Comfortable fit due to seamless shoe design
- + Dust guard tongue
- + Cushioned collar for additional comfort
- + Functional lining made of breathable textile and microfibre
- + Full-length, removable comfort insole ERGO-SOFT ESD with cushioning system and excellent moisture transportation

OUTSOLE

- Perbunan Athletic ESD, slategrey**
- + Outsole with a profile of 3,8 mm
 - + Light and flexible with tailored arch support
 - + Flexion zone with pivot point
 - + Cushioning structure in the heel area
 - + Best possible scuff resistance and anti-slip properties
 - + Heat-resistant up to approx. 220 °C



CUSHIONING

VARIO Multiflex® Technology

Lever arms of the shoe force the foot to make unnatural movements and can lead to foot and Achilles tendon complaints, knee pain and back problems. Furthermore, lever arm forces can increase the risk of injuries such as sprained ankles. Lever arm reduced shoes are characterized by lower heel heights, increased insertion depth, softer material and lesser thickness of the sole, which is rounded in the peripheral areas. A result of the VARIO Multiflex® technology is the multiflexible outsole.

-  above 105 kg
-  up to 105 kg
-  up to 91 kg
-  up to 79 kg
-  up to 57 kg



The AGR quality cachet (Aktion Gesunder Rücken = Campaign for Healthier Backs): Certified and recommended by Association Forum Healthy Back – Better Living and Federal Association of German Back Schools.
More information:
AGR e.V., Stader Str. 6, D - 27432 Bremervörde,
Phone +49 4761/92 63 580, www.agr-ev.de

