

# TECHNICAL DATA SHEET

**JAZEK S2 No. 12520**


**Sz. 36 - 48**



## LABELLING ACCORDING TO STANDARD

Standard for safety footwear EN ISO 20345 S2	Basic requirement for S2: <b>A</b> Antistatic shoe - <b>E</b> Energy absorption in the heel - <b>FO</b> Fuel resistance - <b>WRU</b> Water penetration and water absorption resistant upper - Closed heel area
Additional requirements	<b>SRC</b> Slip resistance: Slip resistant on floors of ceramic tiles with a sodium lauryl sulfate (SLS) solution and on steel floors with glycerol. When it comes to slip resistance as defined by EN ISO 20345, SRC signifies the best possible rating a safety shoe can reach.


## FORM

Safety shoe 	Form A - in size 42, the upper height must not exceed 11.2 cm.
--	--

## AREAS OF APPLICATION

Areas of application	Indoors and outdoors Areas where exposure to moisture is expected (S2)
----------------------	---

## FEATURES

Sizes (unisex model)	<ul style="list-style-type: none"> <li>Expanded size range: available in sizes 36 - 48</li> </ul>
Certification in accordance with DGUV rule 112-191	<ul style="list-style-type: none"> <li>Certified for orthopaedic inserts</li> </ul> 
Padded upper edge	<ul style="list-style-type: none"> <li>Excellent wearing comfort: the padded upper edge protects the Achilles tendon.</li> </ul>
Full, padded bellows tongue	<ul style="list-style-type: none"> <li>Excellent wearing comfort: The tongue prevents pressure marks and avoids dirt from entering into the shoe.</li> </ul>

## FEATURES

PU toe protection  
(polyurethane)

- Directly applied tip protection
- Excellent wear protection in the shoe tip area
- Protects the upper material in this area against premature wear

## UPPER MATERIAL

Cowhide leather

- Areas of application S1/S2/S3
- Natural material
- Wear-resistant
- Breathable
- Water penetration/absorption in accordance with EN ISO 20345 S2

Textile material Cordura®  
(hydrophobized)  
**CORDURA**

- Areas of application S2/S3
- Synthetic material
- Particularly resistant to wear and tear
- Retains its shape
- Tear-resistant
- Dries quickly
- Abrasion-resistant and light
- Water penetration and absorption in accordance with EN ISO 20345 S2; an improved resistance against water penetration is achieved by a special hydrophobation of the material

## LINING

Breathable fabric lining

- Climate-regulating
- Good ventilation
- Skin-friendly
- High absorption and emission of moisture

Heel pocket lining

- The abrasion-resistant microfibre material is particularly sturdy and provides for a pleasant wearing comfort.

## TOE PROTECTION CAP

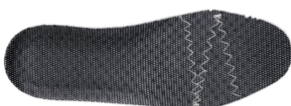
Steel toe cap



- Protection against impacts of min. 200 joules and pressure loading of min. 15 kN
- Permanent edge coverage for cushioning
- Ergonomically shaped
- Comfortable toe room
- Good coverage of the little toe area

## INLAY SOLE

Full-length inlay sole  
JORI



- The full-length, exchangeable inlay sole provides the highest possible comfort in safety shoes.
- The inlay sole is functionally absorbing and releasing moisture and thus provides for a pleasant foot climate.
- Antistatic

## INSOLE

Antistatic soft-fleece insole

Antistatic, even if 100 % dry, without using additional means fulfilling a bridge function to the outsole.

- Approximately 50 % lighter than comparable soles made of natural materials
- Flexible and shape-retaining
- Good air permeability
- Excellent wear resistance
- High moisture absorption
- Quick drying (virtually overnight)

## OUTSOLE

NEW BASIC double-density sole with profile



- Excellent slip resistance
- Antistatic

Outsole: PU (polyurethane)

- Colour: lightgrey
- Profile depth: 3.5 mm
- Abrasion-resistant
- Heat-resistant to approx. 130°C
- Flexible at cold temperatures to approx. -20°C
- Oil and fuel resistant

Midsole: PU (polyurethane)

- The soft PU core provides a good impact absorption and high wearing comfort