

# TECHNICAL DATA SHEET

**MARTEN XXSports Pro BOA® black-blue Low ESD S3**  
**No. 728141**


**Sz. 35 - 48**



## LABELLING ACCORDING TO STANDARD

Standard for safety footwear EN ISO 20345 S3	Basic requirement for S3: <b>A</b> Antistatic shoe - <b>E</b> Energy absorption in the heel - <b>FO</b> Fuel resistance - <b>WRU</b> Water penetration and water absorption resistant upper - <b>P</b> Penetration resistance - Closed heel area - Profiled outsole
Additional requirements	<b>SRA</b> Slip resistance: Slip resistant on floors of ceramic tiles with a sodium lauryl sulfate (SLS) solution.


## FORM

Safety shoe 	Form A - in size 42, the upper height must not exceed 11.2 cm.
--	--





## AREAS OF APPLICATION

Areas of application	Indoors and outdoors Areas where exposure to moisture is expected (S2) Areas where there is a risk of penetration from pointed and sharp objects (S3)  Areas where there is a risk of electrostatic discharge (ESDS/ESD)  Workplaces on hard Undergrounds: The revolutionary Infinergy® sole core cushions impacts and provides for a rebound effect when the compressive impulse subsides - for more energy in every step.
----------------------	---

## FEATURES

ESD equipment	Thanks to its excellent discharge capability, the shoe is suitable for work in ESD sensitive or electrostatically protected areas (EPA). The shoes comply to the standard 61340-5-1.	
Sizes (unisex model)	<ul style="list-style-type: none"> <li>Expanded size range: available in sizes 35 - 48</li> </ul>	

## FEATURES

<p>Certification in accordance with DGUV rule 112-191</p>	<ul style="list-style-type: none"> <li>• Certified for orthopaedic inserts</li> </ul> 
<p>Padded upper edge</p>	<ul style="list-style-type: none"> <li>• Excellent wearing comfort: the padded upper edge protects the Achilles tendon.</li> </ul>
<p>Full, padded bellows tongue</p>	<ul style="list-style-type: none"> <li>• Excellent wearing comfort: The tongue prevents pressure marks and avoids dirt from entering into the shoe.</li> </ul>
<p>Sole core made of Infinergy® by BASF</p> 	<p>The sole core consists of expanded, thermoplastic polyurethane in the form of oval foam beads. These stick together and are very light and elastic. This revolutionary technology cushions the impact and bounces back extremely well on pressure, so that the energy can be returned to the wearer. Even under low temperatures of -20 °C, the core maintains its high elasticity.</p> 
<p>BOA® Fit System</p>	<p>Delivering fit solutions purpose-built for performance, the BOA® Fit System is featured in products across industries (including sports, workwear and medical) and consists of three integral parts: a micro adjustable dial, a super-strong lightweight lace and low friction lace guides. Each unique configuration is engineered for fast, effortless, precision fit and is backed by the BOA® Guarantee.</p> 
<p>TPU scuff cap</p>	<ul style="list-style-type: none"> <li>• Excellent wear protection in the shoe tip</li> <li>• Protects the upper leather in this area against premature wear</li> </ul>


## UPPER MATERIAL

<p>Cowhide leather</p>	<ul style="list-style-type: none"> <li>• Areas of application S1/S2/S3</li> <li>• Natural material</li> <li>• Wear-resistant</li> <li>• Breathable</li> <li>• Water penetration/absorption in accordance with EN ISO 20345 S2</li> </ul>
------------------------	--

## LINING

<p>Breathable fabric lining</p>	<ul style="list-style-type: none"> <li>• Climate-regulating</li> <li>• Good ventilation</li> <li>• Skin-friendly</li> <li>• High absorption and emission of moisture</li> </ul>
<p>Heel pocket lining</p>	<ul style="list-style-type: none"> <li>• The abrasion-resistant microfibre material is particularly sturdy and provides for a pleasant wearing comfort.</li> </ul>

## TOE PROTECTION CAP

<p>Steel toe cap</p> 	<ul style="list-style-type: none"> <li>• Protection against impacts of min. 200 joules and pressure loading of min. 15 kN</li> <li>• Permanent edge coverage for cushioning</li> <li>• Ergonomically shaped</li> <li>• Comfortable toe room</li> <li>• Good coverage of the little toe area</li> </ul>
--	--

## INLAY SOLE

Full-length inlay sole  
SPORTIVE ESD (rec)



- ESD EQUIPMENT: Protection against electrostatic discharge (ESD). The full-length, exchangeable inlay sole is conductive and designed for the use in ESD safety footwear according to the standards DIN EN ISO 20345 and DIN EN 61340-5-1.
- Inlay sole with recycled material content
- The full-length, exchangeable inlay sole provides the highest possible comfort in safety shoes.
- Improvement of the shoe climate thanks to the PU foam's open cell structure. So the foot is always kept comfortably dry.
- The extreme softness of the PU foam absorbs shocks on impact and increases walking comfort.

## PENETRATION RESISTANCE

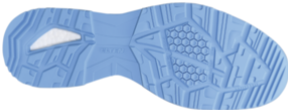
Metal-free penetration  
protection

The textile midsole complies with the penetration safety standard EN 12568 and furthermore fulfils the additional requirements for penetration protection in accordance with EN ISO 20344 / 20345. The light and flexible material enables an increased elasticity of the shoe, which can particularly be recognized when working on uneven grounds or on your knees.

The textile variant offers 100 % foot coverage compared to steel midsoles (foot coverage 85 % due to limits in the shoe manufacturing process). Being 100 % metal-free and antimagnetic, this equipment is used as penetration protection in safety shoes.

## OUTSOLE

WELLMAXX SPORTS  
double-density sole with  
profile



- Antistatic

Outsole: TPU (thermoplastic polyurethane)

- Colour: lightblue
- Profile depth: 3.5 mm
- Abrasion-resistant
- Heat-resistant to approx. 130°C
- Flexible at cold temperatures to approx. -20°C
- Oil and fuel resistant

Midsole: PU (polyurethane) with a core made of Infinergy® by BASF

- The core made of Infinergy® provides a very good cushioning with rebound effect
- Extra-thick midsole for improved cushioning