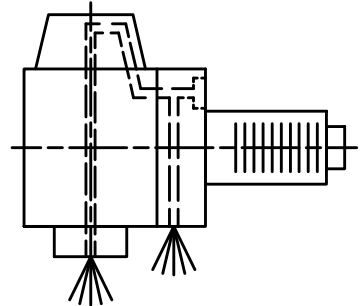
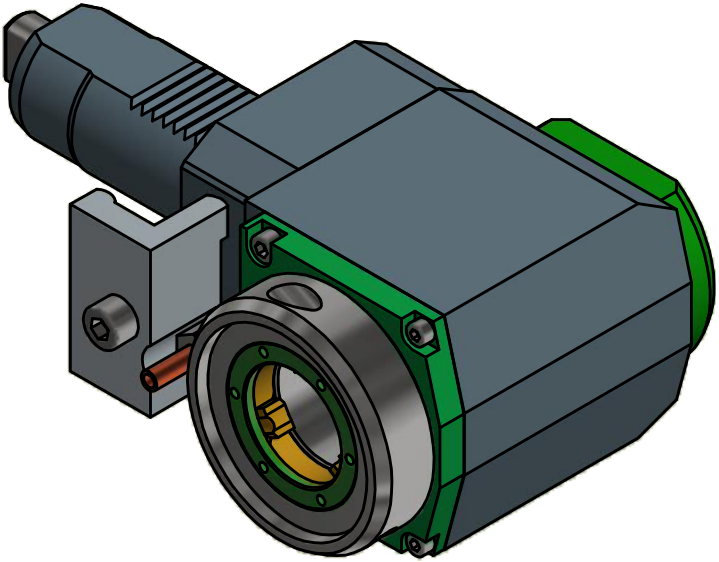
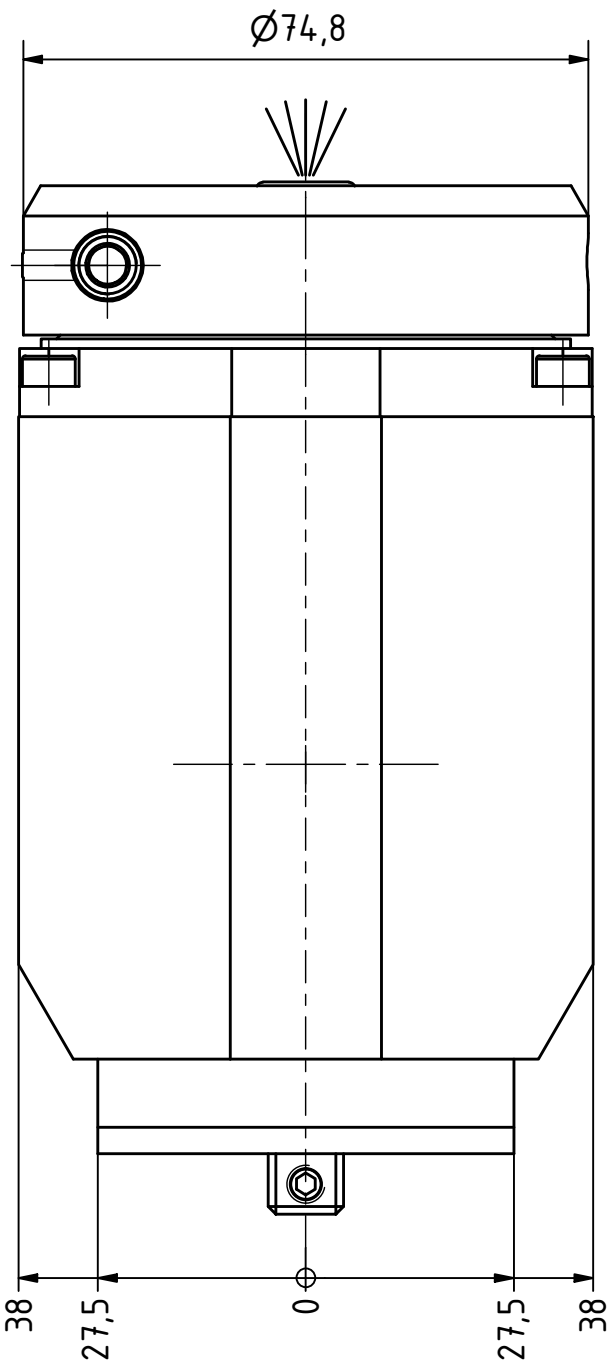
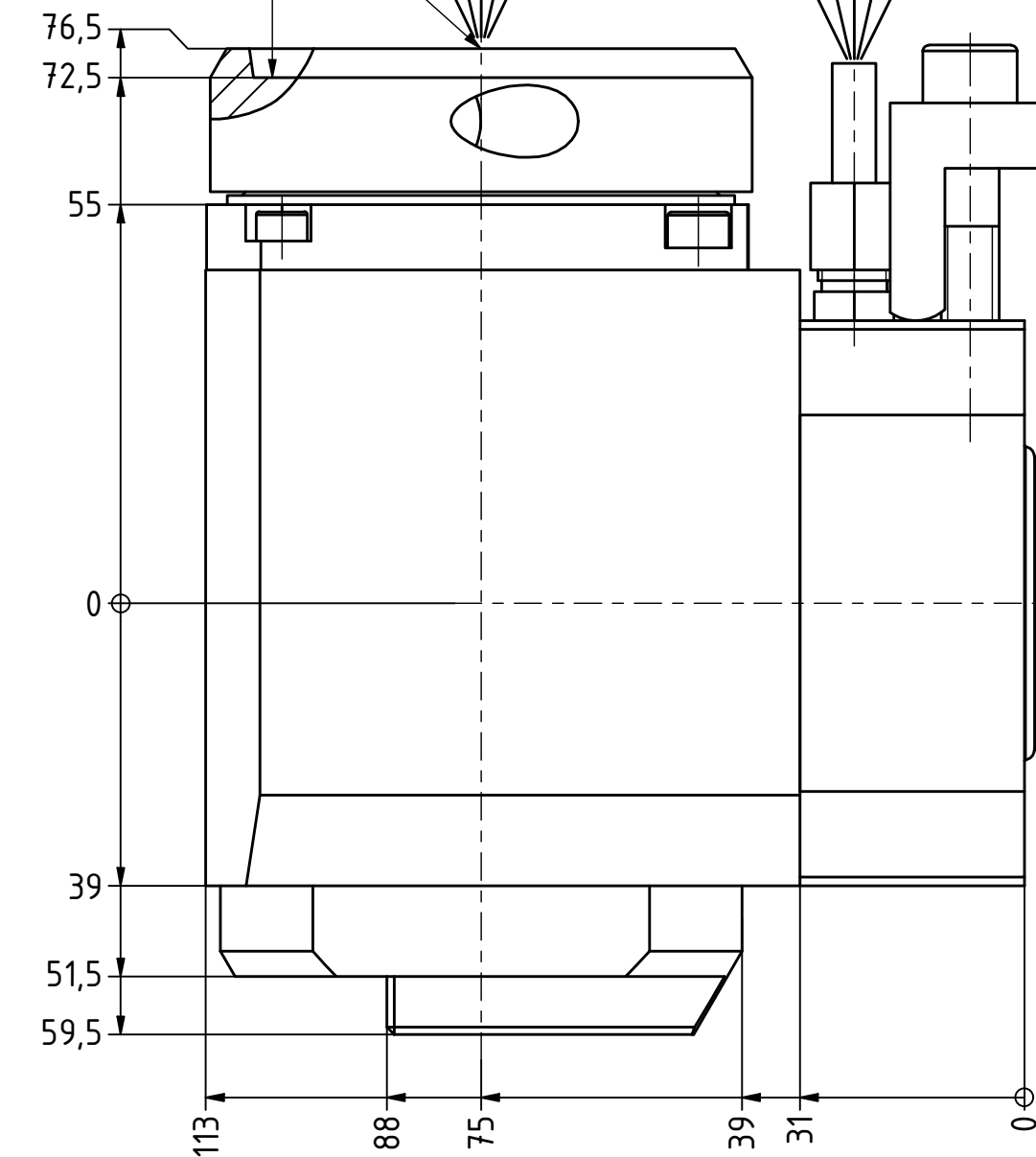
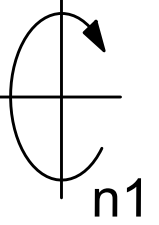
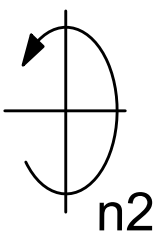


EWS-Varia VX4  
Anlagefläche  
contact surface



Innen- und Aussenkuehlung / Inside and outside coolant supply  
Kuehlmittelfiltrierung < 50µ / coolant filtration < 50µ

Copyright **EWS Tool Technologies**  
Weitergabe und Vervielfaeltigung dieser Unterlage,  
Verwertung und Mitteilung ihres Inhalts nicht  
gestattet, soweit nicht ausdrecklich zugestanden.  
Zuwiderhandlungen verpflichten zu Schadenersatz.

Bemerkung - Note  
Für Trockenlauf geeignet!  
Use without coolant fluid allowed!

| Technische Daten - technical data |                       |
|-----------------------------------|-----------------------|
| Weight                            | = 6.842 [kg]          |
| Torque max. (M1/M2)               | = 50 / 50 [Nm]        |
| Speed max. (n1/n2)                | = 6000 / 6000 [1/min] |
| Gear ratio (i)=n1:n2              | = 1:1                 |
| Pressure (pmax)                   | = 70 [bar]            |

Benennung - Title  
**Radial Bohr und Fräskopf**  
*Radial drilling and milling head*

**EWS** Tool Technologies  
EWS Weigele GmbH & Co. KG  
Maybachstr. 1  
D-73066 UHINGEN  
www.ews-tools.de

Nr. - No.  
**60.40VX4VL3LIKD**

|  |                   |
|--|-------------------|
| Technische Aenderungen vorbehalten!<br>Subject to technical modifications! | IDENT: DEWS083027 |
| REV: -/A   | MNR.<br>215797    |

