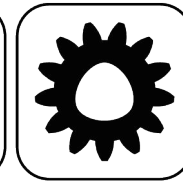




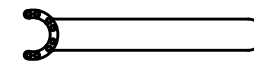
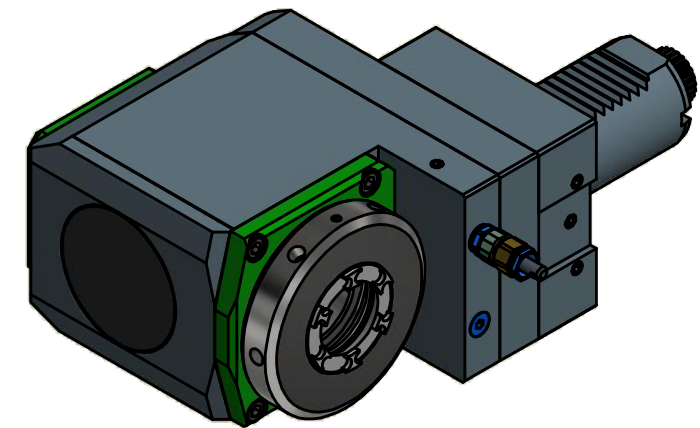
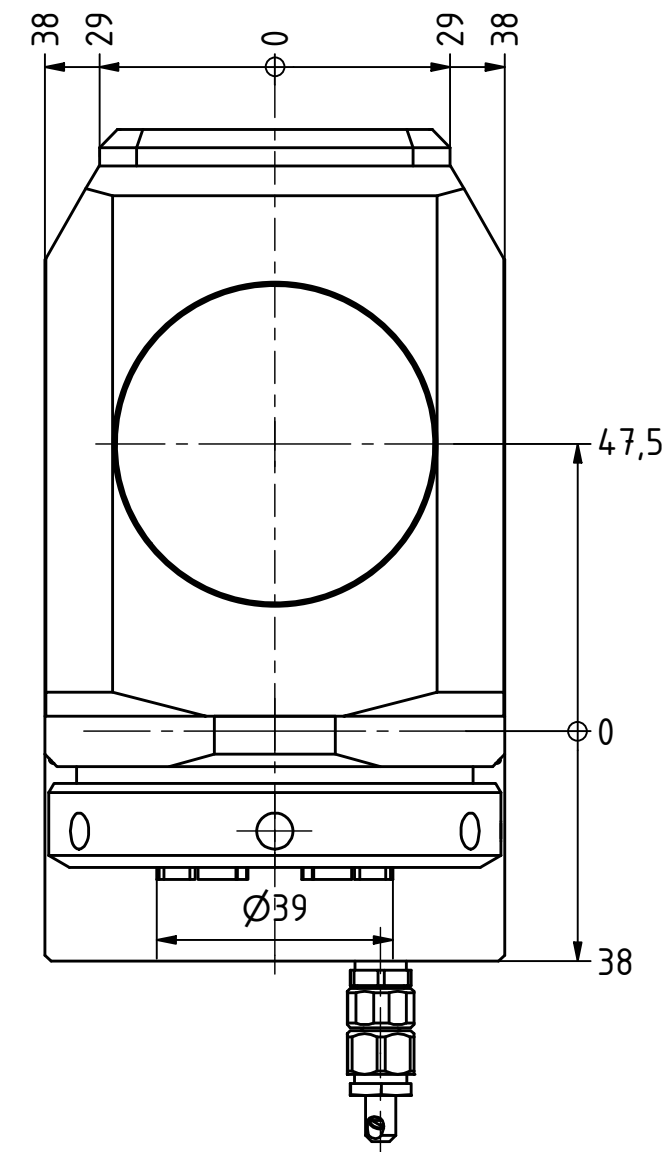
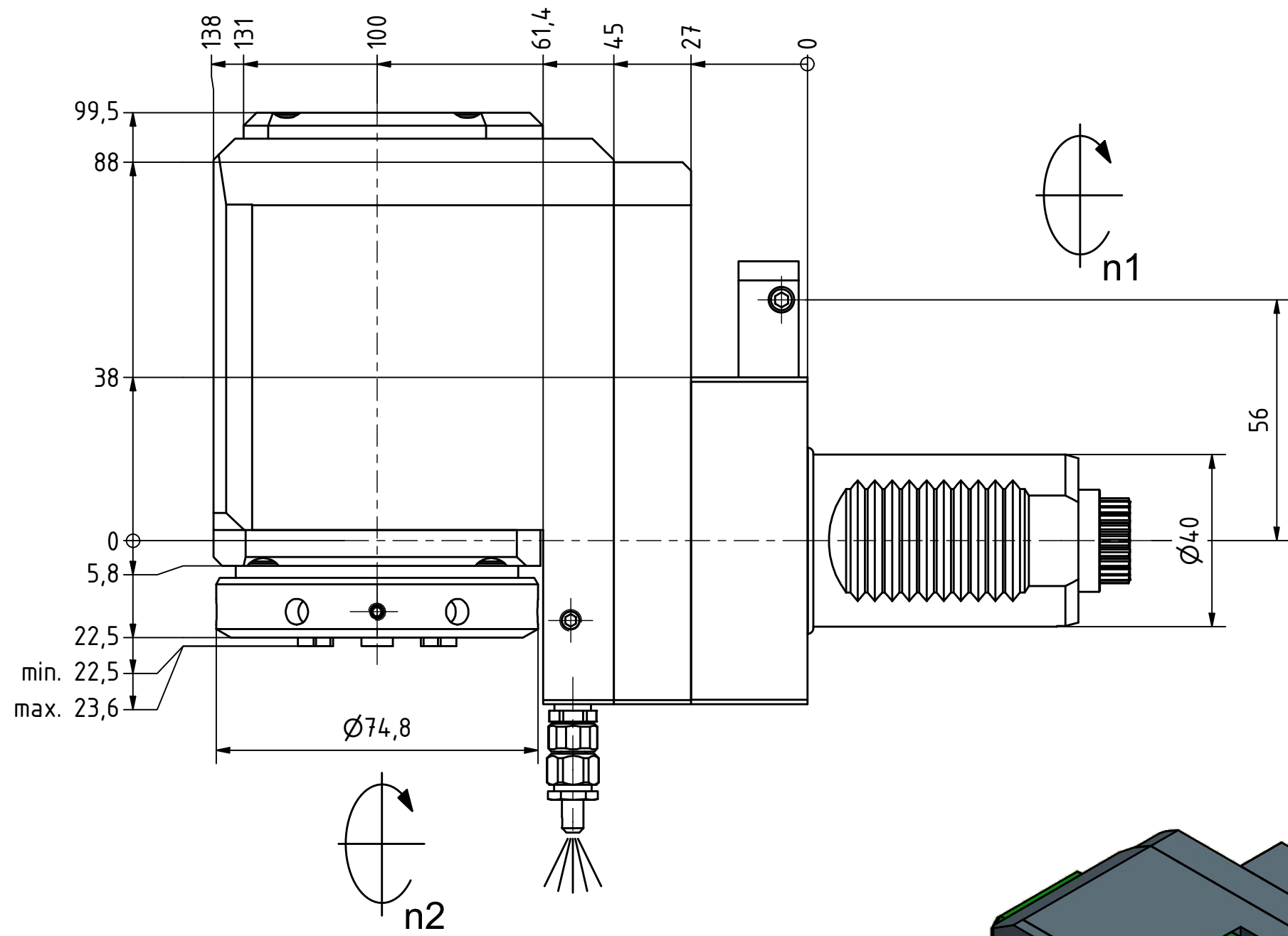
Butterfly Seal



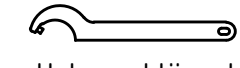
Polygon Joint



Tech Details



Spannzangenschlüssel für innenliegende Mutter  
Clamping wrench for internal collet  
EA 32 K



Hakenschlüssel mit Zapfen  
Hook wrench with fixed pin  
DIN1810 B 68x75

Copyright **EWS Tool Technologies**  
Weitergabe und Vervielfältigung dieser Unterlage, Verwertung und Mitteilung ihres Inhalts nicht gestattet, soweit nicht ausdrücklich zugestanden. Zuwiderhandlungen verpflichten zu Schadenersatz.

Spannzange / collet ER32 DIN6499  
Spannbereich / clamping range: 2,0 - 20,0

Gewindebohrzange / tapping collet  
ET-1-32 M5-M12

Bemerkung - Note

Technische Daten - technical data

Weight = 7.618 [kg]  
Torque max. (M1/M2) = 63 / 63 [Nm]  
Speed max. (n1/n2) = 6000 / 6000 [1/min]  
Gear ratio (i)=n1:n2 = 1:1

Benennung - Title

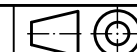
Radial Bohr und Fräskopf, zurückges  
Radial drill. and mill. head offset



Nr. - No.  
80.4032CTXRIM#01

Technische Änderungen vorbehalten!  
Subject to technical modifications!

IDENT: DEWS105628



REV: -/B

MNR.

219409

QR