

8006 C Zyklop Hybrid Ratchet with switch lever and 1/2" drive, 1/2" x 281 mm



The Zyklop Hybrid Ratchet, 1/2"



EAN:	4013288184214	Size:	280x55x40 mm
Part number:	05003780001	Weight:	513 g
Article number:	8006 C	Country of origin:	CZ
		Customs tariff number:	82041100

- Switchover lever for convenient direction change
- Fine-pitched with 72 teeth for a return angle of only 5°
- Secure socket locking
- Multi-component Kraftform handle for optimum pressure and tensile loads.
- Combines robustness, slim design, and little weight.

Zyklop Hybrid ratchet with switchover lever and 1/2" drive, low weight, ergonomic Kraftform handle with slim head design, long lever and with an extension option.



Web link

https://products.wera.de/en/ratchets_and_accessories_the_zyklop_ratchets_the_zyklop_ratchets_1_2_the_zyklop_hybrid_ratchet_1_2_8006_c.html

Wera - 8006 C
05003780001 - 4013288184214

Wera Werkzeuge GmbH
Korzter Straße 21-25
D-42349 Wuppertal
Tel: +49 (0)2 02 / 40 45-0
E-Mail: info@wera.de

The Zyklop Hybrid Ratchet, 1/2"

The Zyklop Hybrid Ratchet



Zyklop Hybrid ratchet with long overall length (leverage effect) and slim ratchet head



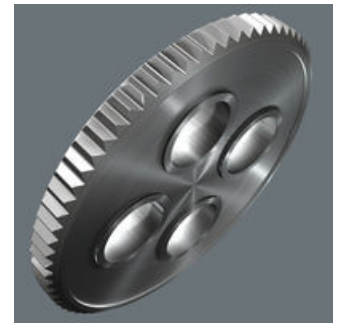
Combines robustness, slim design, and little weight.

Zyklop Hybrid ratchet



We wanted to integrate all the mostly-desired ratchet advantages in a single tool. Our idea was to develop a light ratchet with an ergonomic handle, slim design, long lever and an extension option. Since the term "hybrid" refers to a combination from various sectors, it was quite easy to decide on the name.

Low return angle



The reversible ratchet with 72 fine-pitched teeth has a low return angle of only 5°. This short stroke allows fast and precise work in all types of installation.

Ball lock



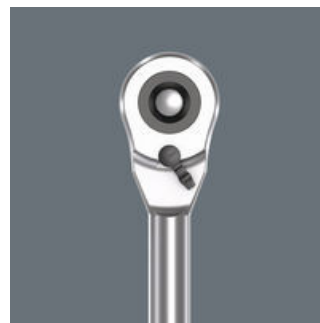
The ball lock ensures sockets and accessories fit securely, providing increased safety during operation. A short press on the release button allows the tool to be changed quickly.

Kraftform



Multi-component Kraftform handle for optimum pressure and tensile loads.

Ideal for working in confined spaces







Very slim ratchet head.

Higher torque transfer



Larger overall length for higher torque transfer.

Further versions in this product family:

				
	inch	mm	mm	mm
05003780001	1/2"	281	34	37

Web link

https://products.wera.de/en/ratchets_and_accessories_the_zyklop_ratchets_the_zyklop_ratchets_1_2_the_zyklop_hybrid_ratchet_1_2_8006_c.html

Wera - 8006 C
05003780001 - 4013288184214

Wera Werkzeuge GmbH
Korzter Straße 21-25
D-42349 Wuppertal
Tel: +49 (0)2 02 / 40 45-0
E-Mail: info@wera.de