

8100 SC 10 Zyklop Metal Ratchet Set with push-through square, 1/2" drive, imperial, 28 pieces  
The Zyklop Metal Ratchet Push, 1/2"



**EAN:** 4013288173966  
**Part number:** 05004080001  
**Article number:** 8100 SC 10

**Size:** 325x145x70 mm  
**Weight:** 2925 g  
**Country of origin:** CZ  
**Customs tariff number:** 82041100

- Extremely slim ratchet with long lever
- Return angle of only 4.7°
- Absolutely smooth switchover of the non-detachable push-through square
- With Take it easy tool finder: colour coding by size

Incredibly compact set arrangement with many tools in a minimum of space. A completely new ratchet set feeling thanks to the unique textile boxes that are very robust and durable. They can be positioned upright for tidy storage on the workshop shelf. Additional surface protection due to textile outer material. Low weight and volume for simpler mobility. "Take it easy" Tool Finder with colour coding according to sizes.



**Web link**

[https://products.wera.de/en/ratchets\\_and\\_accessories\\_the\\_zyklop\\_ratchets\\_the\\_zyklop\\_ratchets\\_1\\_2\\_the\\_zyklop\\_metal\\_ratchet\\_push\\_1\\_2\\_8100\\_sc\\_10.html](https://products.wera.de/en/ratchets_and_accessories_the_zyklop_ratchets_the_zyklop_ratchets_1_2_the_zyklop_metal_ratchet_push_1_2_8100_sc_10.html)

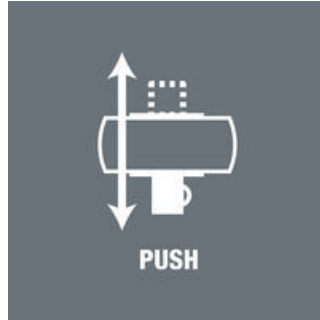
Wera - 8100 SC 10  
05004080001 - 4013288173966

Wera Werkzeuge GmbH  
Korzter Straße 21-25  
D-42349 Wuppertal  
Tel: +49 (0)2 02 / 40 45-0  
E-Mail: [info@wera.de](mailto:info@wera.de)

**8100 SC 10 Zyklop Metal Ratchet Set with push-through square, 1/2" drive,  
imperial, 28 pieces**  
The Zyklop Metal Ratchet Push, 1/2"



**Zyklop Metal Push**



Due to the ever-more confined working environment, space is becoming more and more an issue for the application of ratchets. Our product developers therefore intensively occupied themselves with the issue of confined working spaces, and Wera has now solved this problem. The extremely slim and robust Zyklop Metal ratchet with a long lever was what emerged. When the socket must not get lost and a coincidental change of direction has to be avoided at all cost, the Zyklop Metal Push is the correct choice.

**Slim design**



Forged, full metal ratchet (chrome-molybdenum) that is extremely robust with a long service life; slim design to enable work in very confined spaces.

**Square drive**



Smooth push-through mechanism, that cannot get lost.

**Web link**

[https://products.wera.de/en/ratchets\\_and\\_accessories\\_the\\_zyklop\\_ratchets\\_the\\_zyklop\\_ratchets\\_1\\_2\\_the\\_zyklop\\_metal\\_ratchet\\_push\\_1\\_2\\_8100\\_sc\\_10.html](https://products.wera.de/en/ratchets_and_accessories_the_zyklop_ratchets_the_zyklop_ratchets_1_2_the_zyklop_metal_ratchet_push_1_2_8100_sc_10.html)

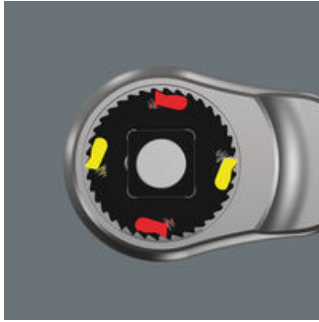
Wera - 8100 SC 10  
05004080001 - 4013288173966

Wera Werkzeuge GmbH  
Korzter Straße 21-25  
D-42349 Wuppertal  
Tel: +49 (0)2 02 / 40 45-0  
E-Mail: [info@wera.de](mailto:info@wera.de)

**8100 SC 10 Zyklop Metal Ratchet Set with push-through square, 1/2" drive, imperial, 28 pieces**  
**The Zyklop Metal Ratchet Push, 1/2"**

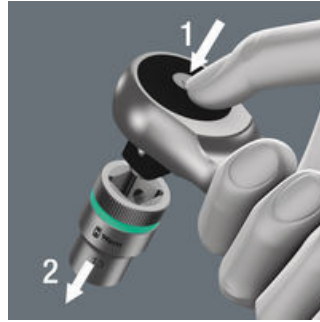


**Dual ratchet teeth**



The dual-ratchet-teeth design means that a 76 fine-toothing division can be achieved from the 38 robust teeth with a return angle of only 4.7°.

**Ball lock**



The ball lock ensures sockets and accessories fit securely, providing increased safety during operation. A short press on the release button allows the tool to be changed quickly.

**Take it easy tool finder system**



Take it easy tool finder system - with profile and size colour-coding for quick and easy tool selection. Colour-coded system for hexagon drive screws (L-Keys, Zyklop bit sockets), external hex drive screws and nuts (Joker wrenches, Zyklop sockets and Zyklop bit sockets with holding function), and TORX® drive screws (L-Keys, Zyklop bit sockets).

**Textile boxes**



The textile boxes offer dramatically improved portability, and are space-saving to boot! This means you can now carry the same collection of tools, in a much more compact and comfortable package. The hassle of running back and forth for the right tools has now become a thing of the past. And the much lower weight of a set makes carrying more convenient than ever before. The textile box including the tool will even survive a fall undamaged.

**Web link**

[https://products.wera.de/en/ratchets\\_and\\_accessories\\_the\\_zyklop\\_ratchets\\_the\\_zyklop\\_ratchets\\_1\\_2\\_the\\_zyklop\\_metal\\_ratchet\\_push\\_1\\_2\\_8100\\_sc\\_10.html](https://products.wera.de/en/ratchets_and_accessories_the_zyklop_ratchets_the_zyklop_ratchets_1_2_the_zyklop_metal_ratchet_push_1_2_8100_sc_10.html)

Wera - 8100 SC 10  
05004080001 - 4013288173966

Wera Werkzeuge GmbH  
Korzter Straße 21-25  
D-42349 Wuppertal  
Tel: +49 (0)2 02 / 40 45-0  
E-Mail: [info@wera.de](mailto:info@wera.de)

# 8100 SC 10 Zyklop Metal Ratchet Set with push-through square, 1/2" drive, imperial, 28 pieces

## The Zyklop Metal Ratchet Push, 1/2"



### Set contents:

#### 8003 C Zyklop Metal Ratchet with push-through square and 1/2" drive, 1/2" x 281 mm



05004063001 1x 1/2" x 281 mm



#### 8790 HMC Zyklop socket with 1/2" drive, 3/8" x 37 mm



05003618001 1x 3/8" x 37 mm

05003619001 1x 7/16" x 37 mm

05003620001 1x 1/2" x 37 mm

05003621001 1x 9/16" x 37 mm

05003622001 1x 19/32" x 37 mm

05003623001 1x 5/8" x 37 mm

05003624001 1x 11/16" x 37 mm

05003625001 1x 3/4" x 37 mm

05003626001 1x 25/32" x 37 mm

05003627001 1x 13/16" x 37 mm



#### 8794 LC Zyklop extension with free-turning sleeve, long, 1/2", 1/2" x 250 mm



05003638001 1x 1/2" x 250 mm



#### 8794 C Zyklop wobble extension, 1/2", 1/2" x 52 mm



05003639001 1x 1/2" x 52 mm



#### 8784 C2 Zyklop bit adaptor, 1/2", 5/16", 5/16" x 1/2" x 50 mm



05003641001 1x 5/16" x 1/2" x 50 mm



#### 851/2 Z bits, PH 2 x 32 mm



05057710001 1x PH 2 x 32 mm

05057715001 1x PH 3 x 32 mm



#### 867/2 Z TORX® bits, TX 20 x 35 mm



05066901001 1x TX 20 x 35 mm

05066900001 1x TX 25 x 35 mm

05066902001 1x TX 27 x 35 mm

05066905001 1x TX 30 x 35 mm

05066910001 1x TX 40 x 35 mm

05066915001 1x TX 45 x 35 mm

05066920001 1x TX 50 x 35 mm

05066925001 1x TX 55 x 35 mm



### Web link

[https://products.wera.de/en/ratchets\\_and\\_accessories\\_the\\_zyklop\\_ratchets\\_the\\_zyklop\\_ratchets\\_1\\_2\\_the\\_zyklop\\_metal\\_ratchet\\_push\\_1\\_2\\_8100\\_sc\\_10.html](https://products.wera.de/en/ratchets_and_accessories_the_zyklop_ratchets_the_zyklop_ratchets_1_2_the_zyklop_metal_ratchet_push_1_2_8100_sc_10.html)

Wera - 8100 SC 10  
05004080001 - 4013288173966

Wera Werkzeuge GmbH  
Korzter Straße 21-25  
D-42349 Wuppertal  
Tel: +49 (0)2 02 / 40 45-0  
E-Mail: info@wera.de

8100 SC 10 Zyklop Metal Ratchet Set with push-through square, 1/2" drive,  
imperial, 28 pieces  
The Zyklop Metal Ratchet Push, 1/2"



**Web link**

[https://products.wera.de/en/ratchets\\_and\\_accessories\\_the\\_zyklop\\_ratchets\\_the\\_zyklop\\_ratchets\\_1\\_2\\_the\\_zyklop\\_metal\\_ratchet\\_push\\_1\\_2\\_8100\\_sc\\_10.html](https://products.wera.de/en/ratchets_and_accessories_the_zyklop_ratchets_the_zyklop_ratchets_1_2_the_zyklop_metal_ratchet_push_1_2_8100_sc_10.html)

Wera - 8100 SC 10  
05004080001 - 4013288173966


Wera Werkzeuge GmbH  
Korzter Straße 21-25  
D-42349 Wuppertal  
Tel: +49 (0)2 02 / 40 45-0  
E-Mail: [info@wera.de](mailto:info@wera.de)

# 8100 SC 10 Zyklop Metal Ratchet Set with push-through square, 1/2" drive, imperial, 28 pieces


## The Zyklop Metal Ratchet Push, 1/2"

### Set contents:


#### 8003 C Zyklop Metal Ratchet with push-through square and 1/2" drive, 1/2" x 281 mm

	05004063001	1x	1/2" x 281 mm
---	-------------	----	---------------


#### 8790 HMC Zyklop socket with 1/2" drive, 3/8" x 37 mm

	05003618001	1x	3/8" x 37 mm
	05003619001	1x	7/16" x 37 mm
	05003620001	1x	1/2" x 37 mm
	05003621001	1x	9/16" x 37 mm
	05003622001	1x	19/32" x 37 mm
	05003623001	1x	5/8" x 37 mm
	05003624001	1x	11/16" x 37 mm
	05003625001	1x	3/4" x 37 mm
	05003626001	1x	25/32" x 37 mm
	05003627001	1x	13/16" x 37 mm


#### 8794 LC Zyklop extension with free-turning sleeve, long, 1/2", 1/2" x 250 mm

	05003638001	1x	1/2" x 250 mm
---	-------------	----	---------------


#### 8794 C Zyklop wobble extension, 1/2", 1/2" x 52 mm

	05003639001	1x	1/2" x 52 mm
--	-------------	----	--------------


#### 8784 C2 Zyklop bit adaptor, 1/2", 5/16", 5/16" x 1/2" x 50 mm

	05003641001	1x	5/16" x 1/2" x 50 mm
---	-------------	----	----------------------

#### 851/2 Z bits, PH 2 x 32 mm

	05057710001	1x	PH 2 x 32 mm
	05057715001	1x	PH 3 x 32 mm

#### 867/2 Z TORX® bits, TX 20 x 35 mm

	05066901001	1x	TX 20 x 35 mm
	05066900001	1x	TX 25 x 35 mm
	05066902001	1x	TX 27 x 35 mm
	05066905001	1x	TX 30 x 35 mm
	05066910001	1x	TX 40 x 35 mm
	05066915001	1x	TX 45 x 35 mm
	05066920001	1x	TX 50 x 35 mm
	05066925001	1x	TX 55 x 35 mm

#### 840/2 Z Bits, 7/32" x 30 mm

		1x	7/32" x 30 mm
		1x	1/4" x 30 mm
		1x	5/16" x 30 mm
		1x	3/8" x 30 mm

### Web link

[https://products.wera.de/en/ratchets\\_and\\_accessories\\_the\\_zyklop\\_ratchets\\_the\\_zyklop\\_ratchets\\_1\\_2\\_the\\_zyklop\\_metal\\_ratchet\\_push\\_1\\_2\\_8100\\_sc\\_10.html](https://products.wera.de/en/ratchets_and_accessories_the_zyklop_ratchets_the_zyklop_ratchets_1_2_the_zyklop_metal_ratchet_push_1_2_8100_sc_10.html)

Wera - 8100 SC 10  
05004080001 - 4013288173966

Wera Werkzeuge GmbH  
Korzter Straße 21-25  
D-42349 Wuppertal  
Tel: +49 (0)2 02 / 40 45-0  
E-Mail: info@wera.de

8100 SC 10 Zyklop Metal Ratchet Set with push-through square, 1/2" drive,  
imperial, 28 pieces  
The Zyklop Metal Ratchet Push, 1/2"



**Web link**

[https://products.wera.de/en/ratchets\\_and\\_accessories\\_the\\_zyklop\\_ratchets\\_the\\_zyklop\\_ratchets\\_1\\_2\\_the\\_zyklop\\_metal\\_ratchet\\_push\\_1\\_2\\_8100\\_sc\\_10.html](https://products.wera.de/en/ratchets_and_accessories_the_zyklop_ratchets_the_zyklop_ratchets_1_2_the_zyklop_metal_ratchet_push_1_2_8100_sc_10.html)

Wera - 8100 SC 10  
05004080001 - 4013288173966

Wera Werkzeuge GmbH  
Korzter Straße 21-25  
D-42349 Wuppertal  
Tel: +49 (0)2 02 / 40 45-0  
E-Mail: [info@wera.de](mailto:info@wera.de)