

# 8790 HMA Deep 1/4" socket, 11 x 50 mm

Zyklop Accessories, 1/4"



<b>EAN:</b>	4013288210319	<b>Size:</b>	116x45x21 mm
<b>Part number:</b>	05004508001	<b>Weight:</b>	47 g
<b>Article number:</b>	8790 HMA Deep	<b>Country of origin:</b>	TW
		<b>Customs tariff number:</b>	82042000

- Long sockets for low-lying screwdriving, often even with protruding threaded rods in small spaces
- Hexagonal profile enables precise bolting with high power transmission and preserves the profile
- With Take it easy tool finder: colour coding by size
- Knurling on lower end for more grip when used manually.
- For manual and machine operation (non-impact), ball intercept ring
- Made of matt chromed chrome-vanadium

Long 1/4" hand and machine socket (ISO 2725 part 3) with ball intercept ring; for external hexagonal bolts and sockets. For use in manual and machine operation (non-impact), even with low-lying screwdriving and protruding threaded rods. With Take it easy tool finder with colour coding by size - for easy and fast location of the required tool. Easy to grasp even with oily hands. The hexagon profile allows the transmission of high forces and puts less strain on the edges of bolts or screw heads than a double hexagon profile. Fine-toothed ratchets also make the use of a double hexagon profile superfluous, even in confined spaces, thanks to their small return angle.

## Web link

[https://products.wera.de/en/ratchets\\_and\\_accessories\\_the\\_zyklop\\_ratchets\\_the\\_zyklop\\_ratchets\\_1\\_4\\_zyklop\\_accessories\\_1\\_4\\_8790\\_hma\\_deep.html](https://products.wera.de/en/ratchets_and_accessories_the_zyklop_ratchets_the_zyklop_ratchets_1_4_zyklop_accessories_1_4_8790_hma_deep.html)

Wera - 8790 HMA Deep  
05004508001 - 4013288210319

Wera Werkzeuge GmbH  
Korzter Straße 21-25  
D-42349 Wuppertal  
Tel: +49 (0)2 02 / 40 45-0  
E-Mail: [info@wera.de](mailto:info@wera.de)

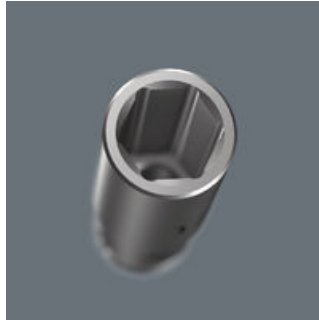
Zyklop Accessories, 1/4"

Long design



Due to the long design of the socket, screwdriving can also be achieved in small spaces. Fittings with protruding threaded rods are often also possible.

Profile-friendly power transmission



The hexagon profile allows the transmission of high forces and puts less strain on the edges of bolts or screw heads than a double hexagon profile. Fine-toothed ratchets also make the use of a double hexagon profile superfluous, even in confined spaces, thanks to their small return angle.

Knurling



Knurling on lower end for more grip when used manually.

Chrome vanadium steel



The chrome-vanadium steel version makes the plug-in tools suitable for heavy loads.

Take it easy tool finder system



Take it easy tool finder system - with profile and size colour-coding for quick and easy tool selection. Colour-coded system for hexagon drive screws (L-Keys, Zyklop bit sockets), external hex drive screws and nuts (Joker wrenches, Zyklop sockets and Zyklop bit sockets with holding function), and TORX® drive screws (L-Keys, Zyklop bit sockets).






Web link

[https://products.wera.de/en/ratchets\\_and\\_accessories\\_the\\_zyklop\\_ratchets\\_the\\_zyklop\\_ratchets\\_1\\_4\\_zyklop\\_accessories\\_1\\_4\\_8790\\_hma\\_deep.html](https://products.wera.de/en/ratchets_and_accessories_the_zyklop_ratchets_the_zyklop_ratchets_1_4_zyklop_accessories_1_4_8790_hma_deep.html)

Wera - 8790 HMA Deep  
05004508001 - 4013288210319

Wera Werkzeuge GmbH  
Korzter Straße 21-25  
D-42349 Wuppertal  
Tel: +49 (0)2 02 / 40 45-0  
E-Mail: info@wera.de

Further versions in this product family:

						
		mm	inch	mm	mm	mm
05004500001	violett_2735C	4.0	-	50.0	6.7	11.8
05004501001	leuchtgruen_375C	5.0	-	50.0	8.0	11.8
05004502001	leuchtorange_152C	5.5	-	50.0	8.6	11.8
05004503001	blau_307C	6.0	-	50.0	9.2	11.8
05004504001	gelb_123C	7.0	-	50.0	10.8	11.8
05004505001	luminous pink	8.0	-	50.0	11.8	11
05004506001	gruen_363C	9.0	-	50.0	12.8	12
05004507001	leuchtgelb_yellowC	10.0	-	50.0	14.7	12.8
<b>05004508001</b>	<b>cyan_2985C</b>	<b>11.0</b>	-	<b>50.0</b>	<b>15.8</b>	<b>14.0</b>
05004509001	schwarz_blackC	12.0	-	50.0	16.8	15.0
05004510001	tuerkis_339C	13.0	-	50.0	17.8	16.0
05004511001	pink_241C	14.0	-	50.0	19.8	17.0
05004512001	weiss	15.0	-	50.0	20.8	18.0

**Web link**
[https://products.wera.de/en/ratchets\\_and\\_accessories\\_the\\_zyklop\\_ratchets\\_the\\_zyklop\\_ratchets\\_1\\_4\\_zyklop\\_accessories\\_1\\_4\\_8790\\_hma\\_deep.html](https://products.wera.de/en/ratchets_and_accessories_the_zyklop_ratchets_the_zyklop_ratchets_1_4_zyklop_accessories_1_4_8790_hma_deep.html)

Wera - 8790 HMA Deep  
 05004508001 - 4013288210319

Wera Werkzeuge GmbH  
 Korzter Straße 21-25  
 D-42349 Wuppertal  
 Tel: +49 (0)2 02 / 40 45-0  
 E-Mail: info@wera.de