

# 334/355 SK/6 Screwdriver set Kraftform Plus Lasertip and rack, 6 pieces

Kraftform Plus – Series 300



<b>EAN:</b>	4013288111425	<b>Size:</b>	285x210x55 mm
<b>Part number:</b>	05007681001	<b>Weight:</b>	734 g
<b>Article number:</b>	334/355 SK/6	<b>Country of origin:</b>	CZ
		<b>Customs tariff number:</b>	82054000

- Screwdriver for slotted and Pozidriv screws
- Smooth hard zones for high speed turning, soft grip zones for high torque transfer
- Take it easy tool finder: colour coding according to profile and size
- Hexagonal blade and bolster for higher torque transfer
- Lasertip tips for more secure fit in the screw head

6-piece screwdriver set with Kraftform Plus handle for pleasant, ergonomic working that makes blisters and calluses a thing of the past. Hard gripping zones for high working speeds whereas soft zones ensure high torque transfer. The Lasertip tip literally bites into the head of the screw and thereby prevents any slipping. More torque can be transferred with the help of an open-end or ring spanner applied to the hexagonal blade and the integrated bolster. "Take it easy" Tool Finder: colour coding according to profile and size. The hexagonal anti-roll feature prevents any bothersome rolling away at the workplace. Including a practical rack for tidy storage of the screwdrivers.



## Web link

[https://products.wera.de/en/screwdrivers\\_kraftform\\_plus\\_series\\_300\\_334\\_355\\_sk\\_6.html](https://products.wera.de/en/screwdrivers_kraftform_plus_series_300_334_355_sk_6.html)

Wera - 334/355 SK/6  
05007681001 - 4013288111425

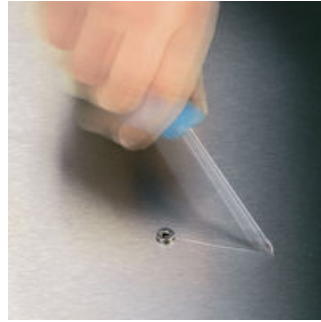
Wera Werkzeuge GmbH  
Korzter Straße 21-25  
D-42349 Wuppertal  
Tel: +49 (0)2 02 / 40 45-0  
E-Mail: [info@wera.de](mailto:info@wera.de)

Kraftform Plus – Series 300

Lasertip prevents slipping out



Kraftform Plus screwdrivers - ergonomics you can grasp. They relieve the entire hand-arm system even when used intensively. Along with other technical and product advantages such as the Lasertip for a secure fit in the screw head, Kraftform screwdrivers are the ideal choice whenever manual screwdriving jobs are concerned.



It happens time and time again that the tip slips out of the screw head when screwdriving, sometimes damaging valuable surfaces or even causing injury. The tips of the Wera Lasertip screwdrivers are microscopically roughened by means of a laser. This rough surface literally "bites" itself firmly into the screw head. Slipping out becomes a thing of the past.

Lasertip



A precisely-focused laser creates a sharp-edged surface structure. Wera Lasertip "bites" itself into the screw head and prevents any slips out of the recess. It is available for screwdrivers for slotted, Phillips and Pozidriv screws.

Hexagonal blade and bolster



Hexagonal blade and bolster for higher torque transfer.

Prevents hand injuries



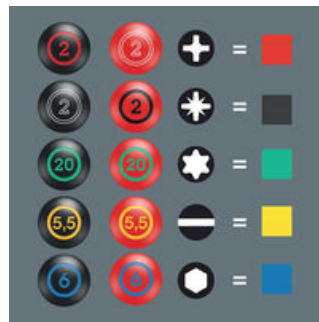
The outstanding design of the Kraftform handle that fits perfectly into the hand prevents hand injuries such as blisters and calluses.

Rapid hand repositioning



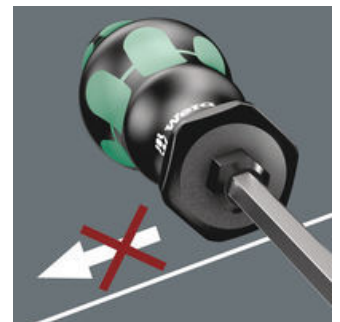
The hard materials used for the handle ensure rapid hand repositioning without any danger of the skin "sticking" to the handle. The surrounding hard zones with large diameters glide like wheels through the hand.

"Take it easy" Tool Finder



Screwdrivers with "Take it easy" tool finder: colour coding according to profile and size stamp.

Non-roll feature



The hexagonal non-roll feature prevents any rolling away at the workplace.

Web link

[https://products.wera.de/en/screwdrivers\\_kraftform\\_plus\\_series\\_300\\_334\\_355\\_sk\\_6.html](https://products.wera.de/en/screwdrivers_kraftform_plus_series_300_334_355_sk_6.html)

Wera - 334/355 SK/6  
05007681001 - 4013288111425

Wera Werkzeuge GmbH  
Korzter Straße 21-25  
D-42349 Wuppertal  
Tel: +49 (0)2 02 / 40 45-0  
E-Mail: info@wera.de

## 334/355 SK/6 Screwdriver set Kraftform Plus Lasertip and rack, 6 pieces

Kraftform Plus – Series 300



### Set contents:

#### 355 SK PZ Screwdriver for Pozidriv screws, PZ 1 x 80 mm



05009341001	1x	PZ 1 x 80 mm
05009342001	1x	PZ 2 x 100 mm

#### 334 SK Screwdriver for slotted screws, 0.6 x 3.5 x 75 mm



05007670001 <sup>1)</sup>	1x	0.6 x 3.5 x 75 mm
05007671001	1x	0.8 x 4 x 90 mm
05007673001	1x	1 x 5.5 x 100 mm
05007674001	1x	1.2 x 6.5 x 125 mm

1) without Lasertip

### Web link

[https://products.wera.de/en/screwdrivers\\_kraftform\\_plus\\_series\\_300\\_334\\_355\\_sk\\_6.html](https://products.wera.de/en/screwdrivers_kraftform_plus_series_300_334_355_sk_6.html)

Wera - 334/355 SK/6  
05007681001 - 4013288111425

Wera Werkzeuge GmbH  
Korzter Straße 21-25  
D-42349 Wuppertal  
Tel: +49 (0)2 02 / 40 45-0  
E-Mail: [info@wera.de](mailto:info@wera.de)