

Click-Torque X 2 torque wrench for insert tools, 10-50 Nm, 9x12 x 10-50 Nm



Click-Torque adjustable torque wrenches for insert tools



| | | | |
|------------------------|------------------|-------------------------------|--------------|
| EAN: | 4013288193797 | Size: | 405x60x60 mm |
| Part number: | 05075652001 | Weight: | 960 g |
| Article number: | Click-Torque X 2 | Country of origin: | TW |
| | | Customs tariff number: | 82041100 |

- For 9x12 mm interchangeable insert tools.
- Easy setting and saving of the desired torque value with audible and tactile clicks when reaching the scale values
- Audible and tactile release mechanism when the set torque value is reached
- Measuring range: 10-50 Nm; Precise to +/- 3% as per DIN EN ISO 6789-1:2017-07
- Very robust design with ergonomic 2-component handle suitable for right and left-handed use

Click-Torque wrench in the unmistakable, robust Wera design with high accuracy as per DIN EN ISO 6789-1: 2017-07. Easy setting and saving of the default value. The audible and tactile clicks on reaching the scale values also facilitate the safe setting of the desired torque value. The robust release mechanism guarantees a clearly audible and tactile release signal when the set torque is reached. For right-hand and left-hand use and with 9x12mm insert square for the insertion of insert tools.

Web link

https://products.wera.de/en/torque_tools_series_click-torque_wrenches_click-torque_adjustable_torque_wrenches_for_insert_tools_click-torque_x_2.html

Wera - Click-Torque X 2
05075652001 - 4013288193797

Wera Werkzeuge GmbH
Korzter Straße 21-25
D-42349 Wuppertal
Tel: +49 (0)2 02 / 40 45-0
E-Mail: info@wera.de

Click-Torque X 2 torque wrench for insert tools, 10-50 Nm, 9x12 x 10-50 Nm



Click-Torque adjustable torque wrenches for insert tools

Click-Torque Wrench series

Drive 9x12 mm

Exact

Simple and safe



We wanted working with torque wrenches to be simple and accurate which is why we developed the Click-Torque wrenches. With the ability to set and save the default values and with the unmistakable, robust Wera design, these torque wrenches are the ideal tools for all bolting applications that require torque-controlled tightening (clockwise torque wrenches) and tightening and loosening (torque wrenches for insert tools).



For 9x12 mm interchangeable insert tools.



Precise to $\pm 3\%$ as per DIN EN ISO 6789-1:2017-07.



Easy setting and saving of the desired torque value; readable on the main and fine scales.

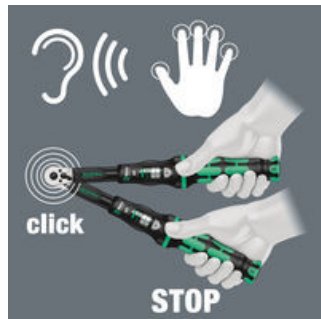
Simple setting

Release mechanism

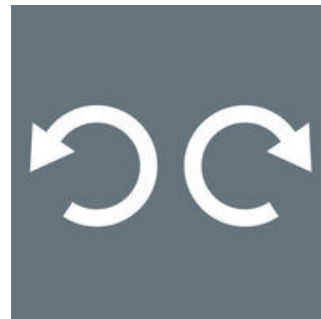
For right and left direction



With audible and tactile clicks when adjusting the scale values.



When the set torque value is reached, an audible and tactile mechanism triggers.



The Click-Torque wrenches for insert tools are suitable for clockwise and counterclockwise uses.

Web link

https://products.wera.de/en/torque_tools_series_click-torque_wrenches_click-torque_adjustable_torque_wrenches_for_insert_tools_click-torque_x_2.html

Wera - Click-Torque X 2
05075652001 - 4013288193797

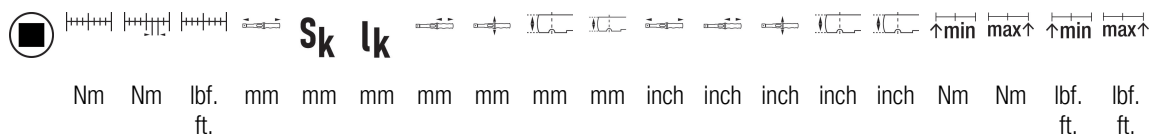
Wera Werkzeuge GmbH
Korzerter Straße 21-25
D-42349 Wuppertal
Tel: +49 (0)2 02 / 40 45-0
E-Mail: info@wera.de

Click-Torque X 2 torque wrench for insert tools, 10-50 Nm, 9x12 x 10-50 Nm



Click-Torque adjustable torque wrenches for insert tools

Further versions in this product family:



| | Nm | Nm | lbf. ft. | mm | mm | mm | mm | mm | mm | mm | mm | inch | inch | inch | inch | inch | Nm | Nm | lbf. ft. | lbf. ft. |
|---------------------------|----------|-----------|-------------|----------|-----|------|-----------|-----|----|----|----|--------------|--------------|--------------|-------------|------------|------|------|-------------|-------------|
| 05075652001 ¹⁾ | 9x1 2 | 10- 50 | 0.25 | 8-3 6 | 347 | 17.5 | 285. 0 | 140 | 47 | 29 | 20 | 13 5 /16" | 5 33 /64" | 1 27 /32" | 1 9/ 64" | 25/3 2" | 10.0 | 50.0 | 8.0 | 36.0 |

1) S_k = Actual dimension of the test attachment; l_k = Distance from the force application point to the test device axis

Web link

https://products.wera.de/en/torque_tools_series_click-torque_wrenches_click-torque_adjustable_torque_wrenches_for_insert_tools_click-torque_x_2.html

Wera - Click-Torque X 2
05075652001 - 4013288193797

Wera Werkzeuge GmbH
Korzter Straße 21-25
D-42349 Wuppertal
Tel: +49 (0)2 02 / 40 45-0
E-Mail: info@wera.de