



<b>EAN:</b>	4013288181251	<b>Size:</b>	255x50x30 mm
<b>Part number:</b>	05100043001	<b>Weight:</b>	61 g
<b>Article number:</b>	335 SB	<b>Country of origin:</b>	CZ
		<b>Customs tariff number:</b>	82054000

- Slotted screwdriver -electrician's blade
- Smooth hard zones for high speed turning, soft grip zones for high torque transfer
- Take it easy tool finder: colour coding according to profile and size
- Hexagonal anti-roll feature against rolling away
- Lasertip tips for more secure fit in the screw head

Premium Kraftform Plus screwdriver with electrician's blade. Multi-component Kraftform Plus handle for comfortable ergonomic screwdriving, which avoids blisters and calluses. Hard handle zones for high working speeds, while soft handle zones guarantee a high torque transfer. The tips of Wera Lasertip screwdrivers are microscopically roughened with laser beams. This rough surface "bites" into the screw head and unintentional slipping is a thing of the past. Take it easy tool finder with colour coding by profile and size stamping - for quick and easy identification of the required tool. The hexagon anti-roll protection avoids screwdrivers from rolling away annoyingly at the workplace.

#### Web link

[https://products.wera.de/en/screwdrivers\\_kraftform\\_plus\\_series\\_300\\_335\\_sb.html](https://products.wera.de/en/screwdrivers_kraftform_plus_series_300_335_sb.html)

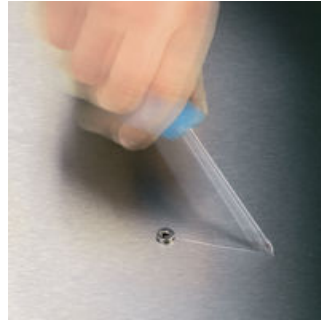
Wera - 335 SB  
05100043001 - 4013288181251

Wera Werkzeuge GmbH  
Korzerter Straße 21-25  
D-42349 Wuppertal  
Tel: +49 (0)2 02 / 40 45-0  
E-Mail: [info@wera.de](mailto:info@wera.de)

#### Lasertip prevents slipping out



Kraftform Plus screwdrivers - ergonomics you can grasp. They relieve the entire hand-arm system even when used intensively. Along with other technical and product advantages such as the Lasertip for a secure fit in the screw head, Kraftform screwdrivers are the ideal choice whenever manual screwdriving jobs are concerned.



It happens time and time again that the tip slips out of the screw head when screwdriving, sometimes damaging valuable surfaces or even causing injury. The tips of the Wera Lasertip screwdrivers are microscopically roughened by means of a laser. This rough surface literally "bites" itself firmly into the screw head. Slipping out becomes a thing of the past.

#### Lasertip



A precisely-focused laser creates a sharp-edged surface structure. Wera Lasertip "bites" itself into the screw head and prevents any slips out of the recess. It is available for screwdrivers for slotted, Phillips and Pozidriv screws.

#### Reduced contact pressure



Wera Lasertip reduces the contact pressure required and enhances force transfer - meaning less screwdriving effort is required. Screwdriving becomes safer and easier.

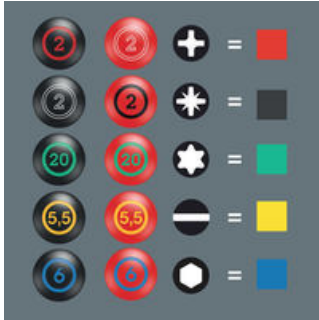
#### Web link

[https://products.wera.de/en/screwdrivers\\_kraftform\\_plus\\_series\\_300\\_335\\_sb.html](https://products.wera.de/en/screwdrivers_kraftform_plus_series_300_335_sb.html)

Wera - 335 SB

05100043001 - 4013288181251

#### Take it easy Tool Finder



Screwdrivers with Take it easy tool finder: colour coding according to profile and size stamp.

#### Kraftform



The basic idea for the prototype of the Kraftform handle - that the hand should dictate the design - has, right through to today, proved to be correct. In cooperation with the internationally recognised Fraunhofer IAO Institute, Wera developed a screwdriver handle designed to match the shape of the human hand as long ago as the 1960s. After a long development phase, the Wera Kraftform handle was launched to the market in 1968. It has been optimised through the years with new technologies, but has kept its proven shape. After all, the human hand has not changed either.

#### Prevents hand injuries



The outstanding design of the Kraftform handle that fits perfectly into the hand prevents hand injuries such as blisters and calluses.

#### Rapid hand repositioning



The hard materials used for the handle ensure rapid hand repositioning without any danger of the skin "sticking" to the handle. The surrounding hard zones with large diameters glide like wheels through the hand.

#### Web link

[https://products.wera.de/en/screwdrivers\\_kraftform\\_plus\\_series\\_300\\_335\\_sb.html](https://products.wera.de/en/screwdrivers_kraftform_plus_series_300_335_sb.html)

Wera - 335 SB

05100043001 - 4013288181251

Wera Werkzeuge GmbH

Korzerter Straße 21-25

D-42349 Wuppertal

Tel: +49 (0)2 02 / 40 45-0

E-Mail: [info@wera.de](mailto:info@wera.de)

## 335 SB Slotted screwdriver, 0.8 x 4 x 100 mm

Kraftform Plus – Series 300



Set contents:

335 Screwdriver for slotted screws, 0.8 x 4 x 100 mm



05110004001

1x 0.8 x 4 x 100 mm



### Web link

[https://products.wera.de/en/screwdrivers\\_kraftform\\_plus\\_series\\_300\\_335\\_sb.html](https://products.wera.de/en/screwdrivers_kraftform_plus_series_300_335_sb.html)

Wera - 335 SB

05100043001 - 4013288181251

Wera Werkzeuge GmbH

Korzerter Straße 21-25

D-42349 Wuppertal

Tel: +49 (0)2 02 / 40 45-0

E-Mail: [info@wera.de](mailto:info@wera.de)