

## 846/8 3-flute Countersink Bits Set, 8 pieces

Bit Sets for Special Applications



<b>EAN:</b>	4013288111678	<b>Size:</b>	153x117x40 mm
<b>Part number:</b>	05104650001	<b>Weight:</b>	383 g
<b>Article number:</b>	846/8	<b>Country of origin:</b>	CZ
		<b>Customs tariff number:</b>	82075060

- Ideal for mobile repair and assembly work
- Rapid, uncomplicated change between drill, countersinking or screwdriving bit
- 1/4" drive suitable for power screwdrivers
- For deburring, chamfering and countersinking
- In practical and robust plastic box

8-piece countersink bit set in a stable plastic box for deburring, chamfering and countersinking. The finely-tuned material elasticity provides for great durability. Perfect chip removal and a low tilt risk ensure pleasant working. Cutting section as per DIN 335-C, 90° with 3 cutters. High quality, ergonomic bit holder equipped with a magnet. The Rapidaptor quick-release chuck ensures rapid bit change without any extra tools. 1/4" hexagon, suitable for holders with take-up as per DIN ISO 1173-D 6.3.

### Web link

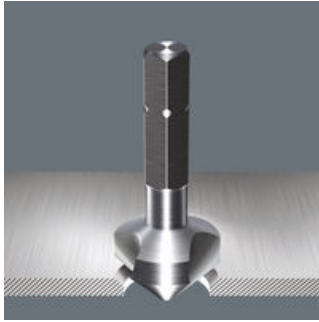
[https://products.wera.de/en/bits\\_holders\\_adaptors\\_and\\_sets\\_bit\\_sets\\_bit\\_sets\\_for\\_special\\_applications\\_846\\_8.html](https://products.wera.de/en/bits_holders_adaptors_and_sets_bit_sets_bit_sets_for_special_applications_846_8.html)

Wera - 846/8  
05104650001 - 4013288111678

Wera Werkzeuge GmbH  
Korzter Straße 21-25  
D-42349 Wuppertal  
Tel: +49 (0)2 02 / 40 45-0  
E-Mail: [info@wera.de](mailto:info@wera.de)

Bit Sets for Special Applications

3-flute countersink bits



3-flute countersink bits, 90°  
 Application: Deburring, chamfering and countersinking  
 1/4" drive suitable for holders as per DIN 3126-D 6.3 (ISO 1173)  
 Hexagon shaft for very high torque transfer  
 HSS = high speed steel  
 Finely adjusted material elasticity for long service life  
 3 tips  
 Excellent centring properties  
 Straightforward cutting  
 Perfect chip removal  
 Low jamming risk  
 Precise return control  
 High corrosion protection

Kraftform



The basic idea for the prototype of the Kraftform handle - that the hand should dictate the design - has, right through to today, proved to be correct. In cooperation with the internationally recognised Fraunhofer IAO Institute, Wera developed a screwdriver handle designed to match the shape of the human hand as long ago as the 1960s. After a long development phase, the Wera Kraftform handle was launched to the market in 1968. It has been optimised through the years with new technologies, but has kept its proven shape. After all, the human hand has not changed either.

Rapidaptor holder



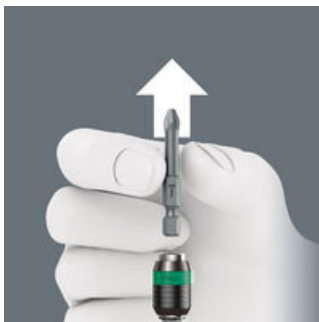
Rapid bit change without needing any additional tools. One-hand operation with a freely spinning sleeve for simplified guidance of the tool.

Rapid-in and self-lock



The bit can be pushed into the adaptor without moving the sleeve. The lock is activated automatically as soon as the bit is applied to the screw. Bits are held securely and wobble-free.

Rapid-out



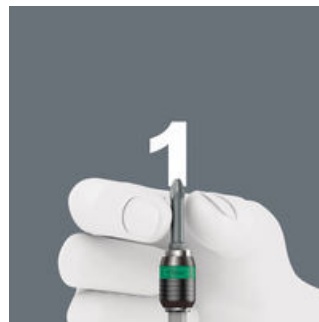
Simply push the sleeve forward to change the bit. The spring mechanism lifts the bit off the magnet and unlocks the tool. The bit can be easily removed. The rapid-out function makes it easy to remove even the smallest bits without extra tools.

Chuck-all



The Rapidaptor quick-release chucks hold 1/4" DIN ISO 1173-C 6,3 and E 6,3 as well as Wera series 1 and 4 bits.

Single-hand function



Every function of the Rapidaptor quick-release chuck, such as inserting or releasing bits, can be carried out with one hand. This is faster, more economical and more ergonomic. There are no unnecessary manoeuvres.

Rapid-spin



The free-turning sleeve allows screw steadying at the start of the screwdriving process. This makes it easier to apply the tool to the screw and prevents slipping. It can also be used as a short extension for 1/4" applications e.g. in combination with the Wera Zyklus Ratchets.

Web link

[https://products.wera.de/en/bits\\_holders\\_adaptors\\_and\\_sets\\_bit\\_sets\\_bit\\_sets\\_for\\_special\\_applications\\_846\\_8.html](https://products.wera.de/en/bits_holders_adaptors_and_sets_bit_sets_bit_sets_for_special_applications_846_8.html)

Wera - 846/8  
 05104650001 - 4013288111678

Wera Werkzeuge GmbH  
 Korzter Straße 21-25  
 D-42349 Wuppertal  
 Tel: +49 (0)2 02 / 40 45-0  
 E-Mail: info@wera.de

## 846/8 3-flute Countersink Bits Set, 8 pieces

### Bit Sets for Special Applications



#### Set contents:

#### 816 R Bitholding screwdriver with Rapidaptor quick-release chuck, 1/4" x 119 mm



05051462001 1x 1/4" x 119 mm



#### 888/4/1 K Rapidaptor Universal Bit Holder, 1/4" x 50 mm



05052500001 1x 1/4" x 50 mm



#### 846 3-flute Countersink Bit, 6.30 x 31 mm



05104630001 1x 6.30 x 31 mm  
05104631001 1x 8.30 x 31 mm  
05104632001 1x 10.40 x 34 mm  
05104633001 1x 12.40 x 35 mm  
05104634001 1x 16.50 x 40 mm  
05104635001 1x 20.50 x 41 mm



#### Web link

[https://products.wera.de/en/bits\\_holders\\_adaptors\\_and\\_sets\\_bit\\_sets\\_bit\\_sets\\_for\\_special\\_applications\\_846\\_8.html](https://products.wera.de/en/bits_holders_adaptors_and_sets_bit_sets_bit_sets_for_special_applications_846_8.html)

Wera - 846/8

05104650001 - 4013288111678

Wera Werkzeuge GmbH  
Korzter Straße 21-25  
D-42349 Wuppertal  
Tel: +49 (0)2 02 / 40 45-0  
E-Mail: [info@wera.de](mailto:info@wera.de)