

368 Screwdriver for square socket head screws, # 4 x 200 mm

Kraftform Plus – Series 300



EAN:	4013288028792	Size:	312x40x40 mm
Part number:	05117687001	Weight:	177 g
Article number:	368	Country of origin:	CZ
		Customs tariff number:	82054000

- Screwdriver for square socket screws
- Multi-component Kraftform handle for fast and ergonomic screwdriving
- Handle markings simplify finding and sorting of tools
- Hexagonal anti-roll feature against rolling away
- The Wera Black Point tip offers an exact fit and optimum corrosion protection

High quality Kraftform Plus screwdriver for square socket screws. The colour coding system allows the user to quickly find and identify the size needed. Multi-component Kraftform handle for fast and low-fatigue working. The Wera Black Point tip offers optimised corrosion protection and an exact fit. The hexagonal anti-roll feature prevents any bothersome rolling away at the workplace. Handle markings for simplified finding and sorting of the tool.



Web link

https://products.wera.de/en/screwdrivers_kraftform_plus_series_300_368.html

Wera - 368

05117687001 - 4013288028792

Wera Werkzeuge GmbH

Korzter Straße 21-25

D-42349 Wuppertal

Tel: +49 (0)2 02 / 40 45-0

E-Mail: info@wera.de

Kraftform Plus – Series 300

Kraftform



The basic idea for the prototype of the Kraftform handle - that the hand should dictate the design - has, right through to today, proved to be correct. In cooperation with the internationally recognised Fraunhofer IAO Institute, Wera developed a screwdriver handle designed to match the shape of the human hand as long ago as the 1960s. After a long development phase, the Wera Kraftform handle was launched to the market in 1968. It has been optimised through the years with new technologies, but has kept its proven shape. After all, the human hand has not changed either.

Prevents hand injuries



The outstanding design of the Kraftform handle that fits perfectly into the hand prevents hand injuries such as blisters and calluses.

Rapid hand repositioning



The hard materials used for the handle ensure rapid hand repositioning without any danger of the skin "sticking" to the handle. The surrounding hard zones with large diameters glide like wheels through the hand.

Large contact area



The large contact area - with particularly high friction to the soft zones - results in high torque transfer without any bruising from the edges.

Identification marking



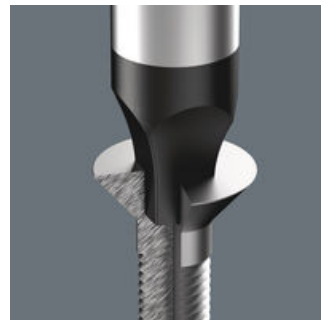
The screw symbol and tip size identification markings on the handle make it easier to find the right screwdriver in the tool case, or at the workplace.

Non-roll feature



The hexagonal non-roll feature prevents any rolling away at the workplace.

Wera Black Point tip



The Wera Black Point tip and a refined hardening process ensure long service life of the tip, improved corrosion protection and an exact fit.

Web link

https://products.wera.de/en/screwdrivers_kraftform_plus_series_300_368.html

Wera - 368

05117687001 - 4013288028792

Wera Werkzeuge GmbH

Korzter Straße 21-25

D-42349 Wuppertal

Tel: +49 (0)2 02 / 40 45-0






E-Mail: info@wera.de

368 Screwdriver for square socket head screws, # 4 x 200 mm

Kraftform Plus – Series 300



Further versions in this product family:

			 mm	 mm	 mm	 inch
05117680001	orange_152C/grau_7544C	# 00	60	81	3.5	2 3/8"
05117681001	gelb_123C/grau_7544C	# 0	60	81	4.0	2 3/8"
05117682001	gruen_363C/grau_7544C	# 1	80	98	4.5	3 1/8"
05117683001	gruen_363C/grau_7544C	# 1	200	98	4.5	8"
05117684001	rot_200C/grau_7544C	# 2	100	105	6.0	4"
05117685001	rot_200C/grau_7544C	# 2	200	105	6.0	8"
05117691001	rot_200C/rot_200C	# 2	300	105	6.0	12"
05117686001	schwarz_blackC/grau_7544C	# 3	150	112	8.0	6"
05117687001	schwarz_blackC/grau_7544C	# 4	200	112	8.0	8"

Web link

https://products.wera.de/en/screwdrivers_kraftform_plus_series_300_368.html

Wera - 368

05117687001 - 4013288028792

Wera Werkzeuge GmbH

Korzter Straße 21-25

D-42349 Wuppertal

Tel: +49 (0)2 02 / 40 45-0

E-Mail: info@wera.de