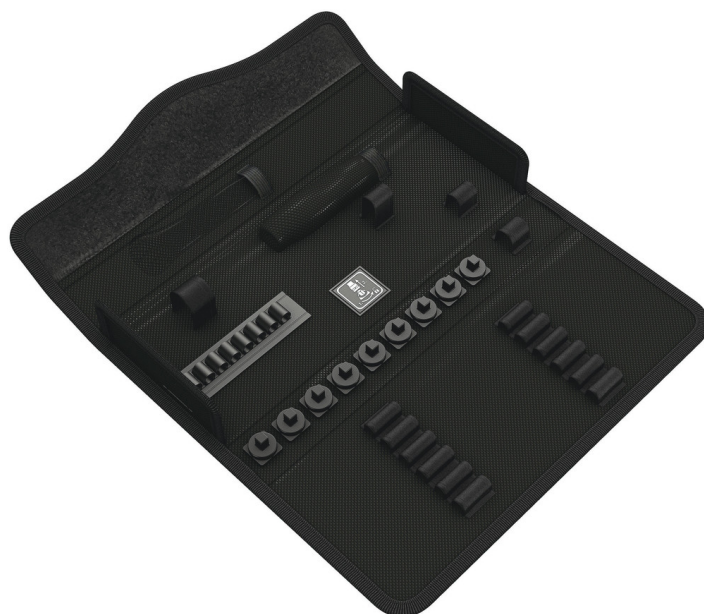


9424 Textile Box Kraftform Kompakt W 1, empty, 302 x 126 x 50 mm

Textile Pouches and Boxes for Kraftform Kompakt Sets, empty



EAN:	4013288194602	Size:	305x135x45 mm
Part number:	05136474001	Weight:	380 g
Article number:	9424	Country of origin:	CN
		Customs tariff number:	42029298

- Robust, rigid material
- Strong hook and loop fastener system prevents unintentional opening and loss of the tool
- Compact design for space-saving storage
- Low weight for easy transport
- Compatible with Wera 2go

Robust textile box for space-saving tool storage; ideal for mobile use, as the material used is light and firm; for Kraftform Kompakt W 1; for up to 36 tools; empty.

Web link

https://products.wera.de/en/kraftform_kompakt_textile_pouches_and_boxes_for_kraftform_kompakt_sets_empty_9424.html

Wera - 9424
05136474001 - 4013288194602

Wera Werkzeuge GmbH
Korzter Straße 21-25
D-42349 Wuppertal
Tel: +49 (0)2 02 / 40 45-0
E-Mail: info@wera.de

9424 Textile Box Kraffform Kompakt W 1, empty, 302 x 126 x 50 mm



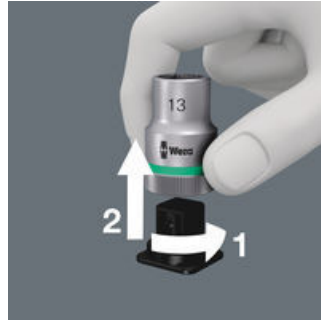
Textile Pouches and Boxes for Kraffform Kompakt Sets, empty

Robust, lightweight, rigid



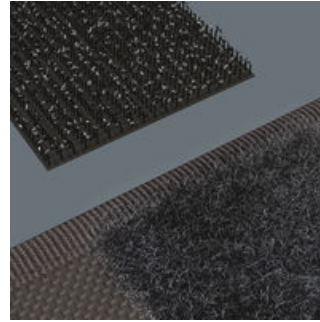
The material used is distinguished by its high level of robustness. At the same time, the textile box is light and rigid. Even if the textile box falls down, the tools are well protected.

Secure hold and easy removal



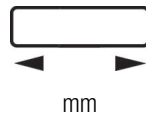
The all new smooth turning mechanism guarantees both secure and rattle-free storage, yet allows easy removal of the tool.

Flexible thanks to hook and loop fastener strips

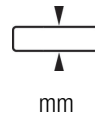


The textile box features a fleece zone at the back. Using the provided self-adhesive hook and loop fastener strips, the textile box can be attached to the Wera 2go components. Or to the wall, shelf or workshop trolley.

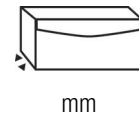
Further versions in this product family:



mm



mm



mm

05136474001

302.0

126.0

50.0

Web link

https://products.wera.de/en/kraffform_kompakt_textile_pouches_and_boxes_for_kraffform_kompakt_sets_empty_9424.html

Wera - 9424

05136474001 - 4013288194602

Wera Werkzeuge GmbH

Korzter Straße 21-25

D-42349 Wuppertal

Tel: +49 (0)2 02 / 40 45-0

E-Mail: info@wera.de