



EAN:	4013288094704	Size:	285x210x55 mm
Part number:	05320540001	Weight:	779 g
Article number:	335/350/367/7 Lasertip	Country of origin:	CZ
		Customs tariff number:	82054000

- Screwdrivers for slotted, cross-recess Phillips and Pozidriv screws and TORX®
- Multi-component Kraftform handle for fast and ergonomic screwdriving
- Take it easy tool finder: colour coding according to profile and size
- Hexagonal anti-roll feature against rolling away
- Lasertip tips for more secure fit in the screw head

7-piece screwdriver set with Kraftform handle for pleasant, ergonomic working that prevents blisters and calluses. The Lasertip tip literally bites into the head of the screw and thereby prevents any slipping out of the screw head. "Take it easy" Tool Finder: colour coding according to profile and size. The hexagonal anti-roll feature prevents any bothersome rolling away at the workplace. Includes a practical rack for tidy storage of the screwdrivers.

Web link

https://products.wera.de/en/screwdrivers_kraftform_plus_series_300_335_350_367_7_lasertip.html

Wera - 335/350/367/7 Lasertip
05320540001 - 4013288094704

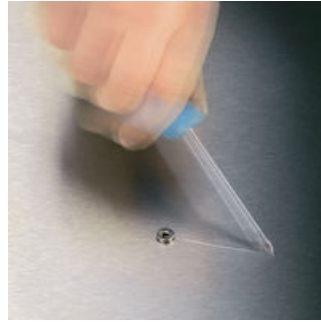
Wera Werkzeuge GmbH
Korzter Straße 21-25
D-42349 Wuppertal
Tel: +49 (0)2 02 / 40 45-0
E-Mail: info@wera.de

Kraftform Plus – Series 300

Lasertip prevents slipping out



Kraftform Plus screwdrivers - ergonomics you can grasp. They relieve the entire hand-arm system even when used intensively. Along with other technical and product advantages such as the Lasertip for a secure fit in the screw head, Kraftform screwdrivers are the ideal choice whenever manual screwdriving jobs are concerned.



It happens time and time again that the tip slips out of the screw head when screwdriving, sometimes damaging valuable surfaces or even causing injury. The tips of the Wera Lasertip screwdrivers are microscopically roughened by means of a laser. This rough surface literally "bites" itself firmly into the screw head. Slipping out becomes a thing of the past.

Lasertip



A precisely-focused laser creates a sharp-edged surface structure. Wera Lasertip "bites" itself into the screw head and prevents any slips out of the recess. It is available for screwdrivers for slotted, Phillips and Pozidriv screws.

Reduced contact pressure



Wera Lasertip reduces the contact pressure required and enhances force transfer - meaning less screwdriving effort is required. Screwdriving becomes safer and easier.

Web link

https://products.wera.de/en/screwdrivers_kraftform_plus_series_300_335_350_367_7_lasertip.html

Wera - 335/350/367/7 Lasertip
05320540001 - 4013288094704

Wera Werkzeuge GmbH
Korzter Straße 21-25
D-42349 Wuppertal
Tel: +49 (0)2 02 / 40 45-0
E-Mail: info@wera.de

Kraftform Plus – Series 300

Kraftform



The basic idea for the prototype of the Kraftform handle - that the hand should dictate the design - has, right through to today, proved to be correct. In cooperation with the internationally recognised Fraunhofer IAO Institute, Wera developed a screwdriver handle designed to match the shape of the human hand as long ago as the 1960s. After a long development phase, the Wera Kraftform handle was launched to the market in 1968. It has been optimised through the years with new technologies, but has kept its proven shape. After all, the human hand has not changed either.

Prevents hand injuries



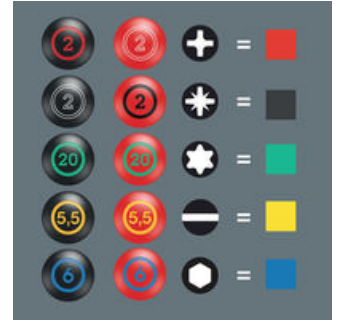
The outstanding design of the Kraftform handle that fits perfectly into the hand prevents hand injuries such as blisters and calluses.

Rapid hand repositioning



The hard materials used for the handle ensure rapid hand repositioning without any danger of the skin "sticking" to the handle. The surrounding hard zones with large diameters glide like wheels through the hand.

"Take it easy" Tool Finder



Screwdrivers with "Take it easy" tool finder: colour coding according to profile and size stamp.

Web link

https://products.wera.de/en/screwdrivers_kraftform_plus_series_300_335_350_367_7_lasertip.html


Wera - 335/350/367/7 Lasertip
05320540001 - 4013288094704

Wera Werkzeuge GmbH
Korzter Straße 21-25
D-42349 Wuppertal
Tel: +49 (0)2 02 / 40 45-0
E-Mail: info@wera.de

Kraftform Plus – Series 300



Set contents:

350 PH Screwdriver for Phillips screws, PH 2 x 100 mm

 05008720001 1x PH 2 x 100 mm




355 PZ Screwdriver for Pozidriv screws, PZ 1 x 80 mm

 05009310001 1x PZ 1 x 80 mm
 05009315001 1x PZ 2 x 100 mm






335 Screwdriver for slotted screws, 0.8 x 4 x 100 mm

 05110004001 1x 0.8 x 4 x 100 mm



367 Screwdriver for TORX® screws, TX 15 x 80 mm

 05028008001 1x TX 15 x 80 mm
 05028010001 1x TX 20 x 100 mm
 05028012001 1x TX 25 x 100 mm



Web link

https://products.wera.de/en/screwdrivers_kraftform_plus_series_300_335_350_367_7_lasertip.html

Wera - 335/350/367/7 Lasertip
05320540001 - 4013288094704

Wera Werkzeuge GmbH
Korzter Straße 21-25
D-42349 Wuppertal
Tel: +49 (0)2 02 / 40 45-0
E-Mail: info@wera.de