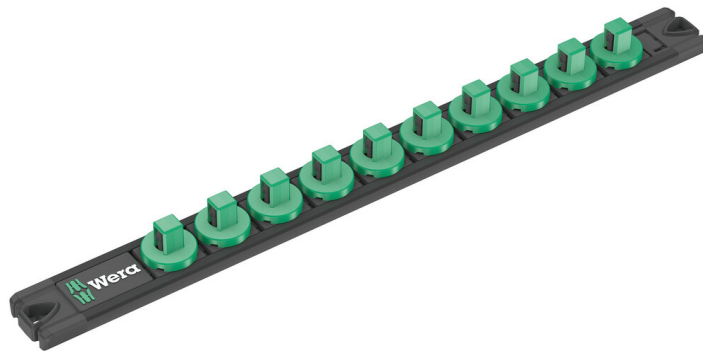


## 9601 Magnetic socket rail, 3/8", empty, 30 x 340 mm

Zyklop Accessories, 3/8"



<b>EAN:</b>	4013288223333	<b>Size:</b>	340x30x26 mm
<b>Part number:</b>	05136421001	<b>Weight:</b>	158 g
<b>Article number:</b>	9601	<b>Country of origin:</b>	CN
		<b>Customs tariff number:</b>	39269097

- Rail with secure socket mounting and yet easy removal (twist-to-unlock) for temporary attachment on wall, shelf or workshop trolley
- Smooth Twist to Unlock mechanism for a secure fit and simple removal of the sockets
- Empty, for up to 10 sockets, 3/8"

1 socket rail, empty. For up to 10 sockets and/or bit sockets with 3/8" drive. The rail allows temporary attachment to metallic surfaces and, with its twist-to-unlock function, ensures secure locking and unlocking of the sockets.

### Web link

[https://products.wera.de/en/ratchets\\_and\\_accessories\\_the\\_zyklop\\_ratchets\\_the\\_zyklop\\_ratchets\\_3\\_8\\_zyklop\\_accessories\\_3\\_8\\_9601.html](https://products.wera.de/en/ratchets_and_accessories_the_zyklop_ratchets_the_zyklop_ratchets_3_8_zyklop_accessories_3_8_9601.html)

Wera - 9601  
05136421001 - 4013288223333

Wera Werkzeuge GmbH  
Korzter Straße 21-25  
D-42349 Wuppertal  
Tel: +49 (0)2 02 / 40 45-0  
E-Mail: [info@wera.de](mailto:info@wera.de)

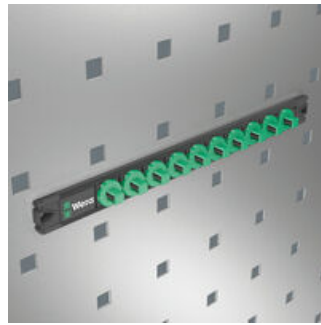
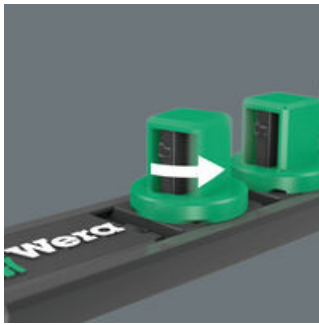
# 9601 Magnetic socket rail, 3/8", empty, 30 x 340 mm

Zyklop Accessories, 3/8"



Twist-to-unlock mechanism

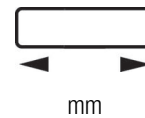
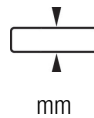
Magnetic



With its twist-to-unlock mechanism the socket rail ensures easy access of the sockets. At the same time the sockets are held securely.

Thanks to the magnet, the rail is suitable for temporary attachment to the wall, shelf or workshop trolley.

Further versions in this product family:



05136421001	30.0	340.0
-------------	------	-------

### Web link

[https://products.wera.de/en/ratchets\\_and\\_accessories\\_the\\_zyklop\\_ratchets\\_the\\_zyklop\\_ratchets\\_3\\_8\\_zyklop\\_accessories\\_3\\_8\\_9601.html](https://products.wera.de/en/ratchets_and_accessories_the_zyklop_ratchets_the_zyklop_ratchets_3_8_zyklop_accessories_3_8_9601.html)

Wera - 9601  
05136421001 - 4013288223333

Wera Werkzeuge GmbH  
Korzerter Straße 21-25  
D-42349 Wuppertal  
Tel: +49 (0)2 02 / 40 45-0  
E-Mail: info@wera.de