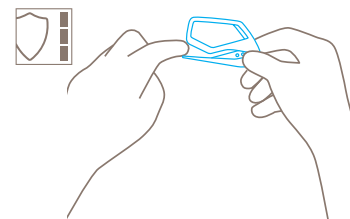


TECHNICAL DATA SHEET

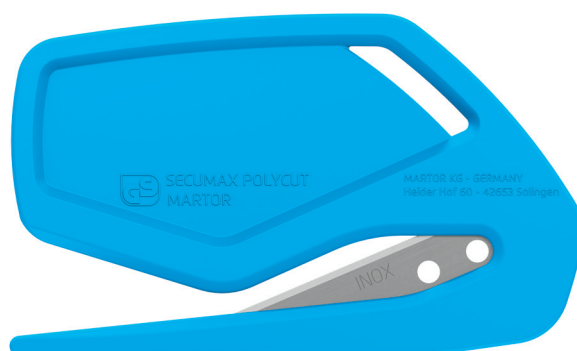
SECUMAX POLYCUT NO. 8500212

Safety technology



Concealed blade – a maximum degree of safety

The SECUMAX POLYCUT blade is not an open one, but is hidden from people and goods. This provides you with the highest degree of safety from cut injuries and from damage to goods.



DISPOSABLE SAFETY KNIFE WITH CONCEALED BLADE, ESPECIALLY FOR CUTTING FOIL AND PAPER.

Order No. 8500212.12

The all-rounder among specialists. With stainless steel blade.

The SECUMAX POLYCUT is another of our small, plastic disposable knives and is special by being an all-rounder. The larger gap between the blade and plastic means it can cut through multiple layers of material. Furthermore, with its long pointed nose you are able to cut your way through envelopes, between paper rolls and through layers of film. Its slender design also enables it to be used in tight spaces.

It's all protected

The stainless steel quality blade is safely embedded between the nose and the handle. So it only cuts what you really want to cut. And there is no risk to your goods while doing so.

Singularly good

The SECUMAX POLYCUT is a disposable safety knife. Since you do not have to change the blade, neither you nor your staff can come into contact with it. An additional benefit as far as safety is concerned.

Long, pointed nose

Why the extra long and pointed nose in the SECUMAX POLYCUT? Because you can place it particularly well in the spaces in between. The cutting material is also led to the blade in a much more reliable way.

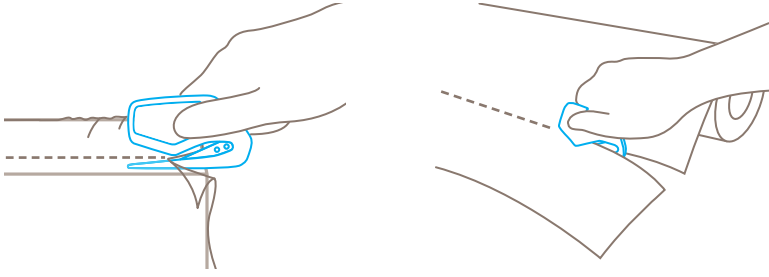
For any hand

The SECUMAX POLYCUT is small, light and handy. So handy that you can gladly work longer with it. It doesn't matter whether you are right or left-handed, because this cutting tool always fits.

Ideally placed

You won't misplace the SECUMAX POLYCUT so easily. The safety knife is equipped with an eyelet so it can be kept in an easy to find place.

USAGE



PRODUCT FEATURES

Technical features



Maximum safety



Disposable knife



Ergonomic



Cutting depth



For right and left handers



Lanyard hole



Printable for promotional purposes

Main cutting materials



Wrapping, stretch and shrink foil



Tape



Layers of foil or paper



Yarn, cord



Envelope

Installed blade

Blade thickness 0.30 mm.

BLADE CHANGE

The blade is moulded into the body of the knife and cannot be changed.

SERVICES OFFERED



Video



Technical data sheet



Consulting service

PRODUCT AND PACKAGING DETAILS

Order No.	NO. 8500212.12	Packaging unit (PU)	10 in box (loose)
Knife size (L x W x H)	76.1 x 3 x 45.1 mm	Size (PU)	83 x 35 x 47 mm
Weight knife	6.6 g	Weight (PU)	78.4 g
Basic material	Plastic	EAN Code (PU)	4002632801013
Cutting depth	3.0 mm	Quantity in outer pack	-
		Customs tariff number	82141000

SAFETY CERTIFICATE

Date of issue	23.10.2018
Certification	GS certificate NO. 603847-6480-55094-2018

Certificates and awards



SECURITY ADVICE

To ensure that you use your new MARTOR knife safely and most effectively, please read and note the following user-instructions. Please keep the written guide in a safe place so that you can access it at any time.

1. General application instructions: Please always use the product carefully for manual cutting work only and not for any purposes other than those that are intended. Please take the correct handling and the proper use of the knives into account in this regard. As an additional safety measure, we recommend the wearing of safe gloves.

2. Special application Instructions to avoid the danger of injuries: Only use cutting tools that are in perfect condition and have sharp, clean and undamaged MARTOR blades. Employ the utmost care when handling the knives. Prior to use, familiarise yourself with the safety features and their functioning. Ensure that these safety features are not impaired by the type of material to be cut. CAUTION: The blade is sharp and can result in serious and deep cuts. Therefore, never reach into the blade! Do not place your free hand in the line of cutting and never cut directly towards you.

3. Replacement of spare parts: This knife is a disposable product. It is not designed to have its blades changed or any other of its components replaced. If the knife shows signs of aging or any other wear, e.g. which impair the safety features or usage, the knife must be taken out of service and replaced. Do not modify this product in any way. Modifications of any kind may impair product safety. CAUTION: The risk of injury caused by manipulation of this product is extremely high.

4. Non-use of the knife: Always secure the blade in such a way (depending on product type) that injuries due to cuts are excluded. Store the knife in a secure place.

5. Care instructions: To guarantee a long service life, always keep the knife clean and do not expose it to unnecessary soiling and humidity.

CAUTION: No liability will be assumed for consequential losses. Subject to technical changes and errors! This knife does not belong in the hands of children!

MANUFACTURER

MARTOR KG | Lindgesfeld 28 | 42653 Solingen | Germany
T +49 212 73870-0 | info@martor.de | www.martor.com