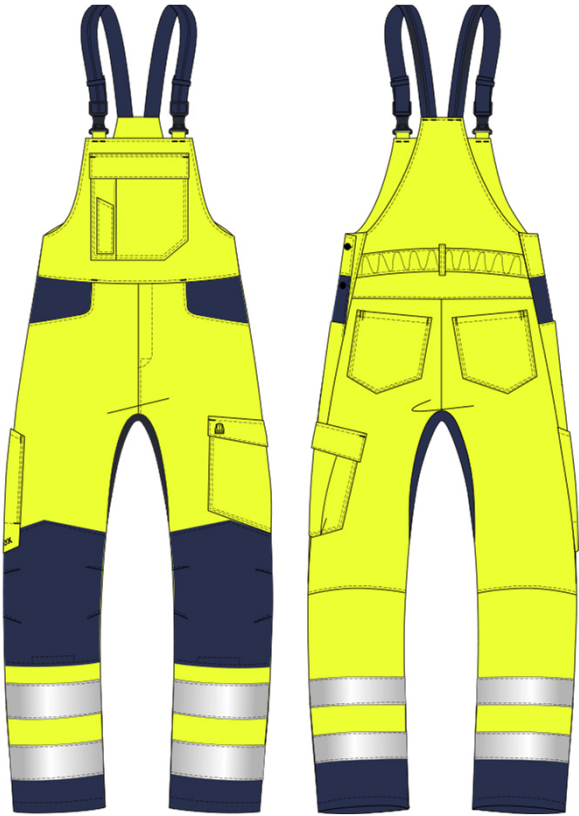


### uvex suXXeed construction High vis dungarees men



**trousers** uvex suXXeed construction  
**model-no:** 7469  
**color:** high vis yellow/ dark blue  
 high vis orange/ dark blue  
**material:** 50 % CO, 50 % PES  
 approx. 270 gsm  
 trimming: 65 % PES, 35 % CO  
 approx. 245 gsm  
**size:** 23-32, 42-66, 90-110  
**sales unit:** 1 piece

**PPE-category II**

EN ISO 20471



INDUSTRIALWASH●●

Please do not use detergents with optical brighteners

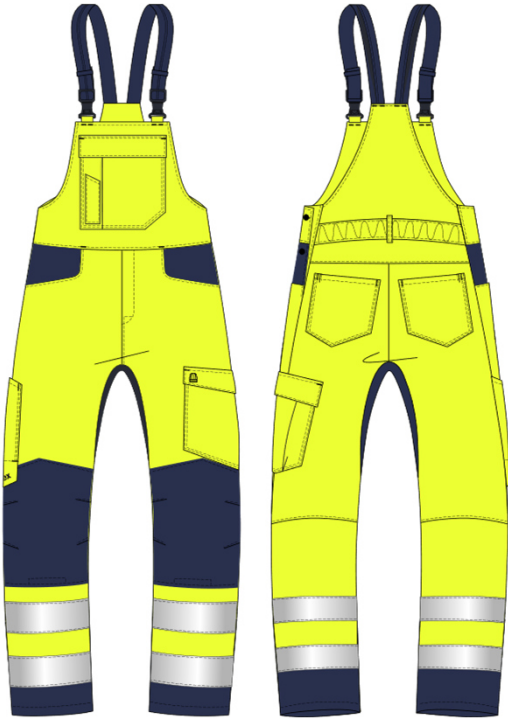
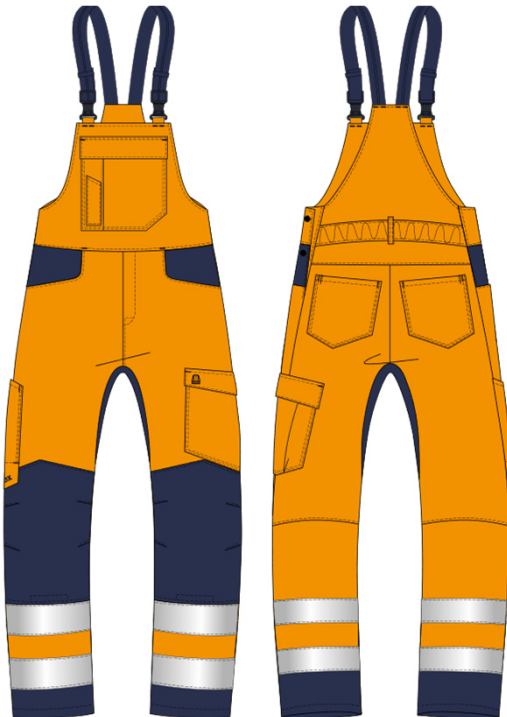
**Product description:**

- ergonomic fit
- attached waistband with elastic and 1 belt loop
- Zip in front fly
- 2 back pockets
- 2 side pockets
- Left leg pocket with pleat and flap
- ruler pocket
- insert in the crotch area
- Knee shaping by darts
- Inside knee pockets
- 2 reflective strips each around trouser legs
- Direct embroidery pictogram high visibility on leg flap left
- Direct embroidery uvex on ruler pocket
- OEKO-TEX® Standard 100

- The declaration of conformity for this product can be viewed at: [uvex-safety.com/ce](http://uvex-safety.com/ce)



**Please note user information!**

**uvex suXXed construction  
High vis trousers men****model-no:** 7469**art-no.:** 88270**model-no:** 7469**art-no.:** 88269**Please note user information!**