

### uvex suXXeed arc

### Internal arc, heat, flameprotection + antistatic



<b>Jacket</b>	<b>uvex suXXeed arc</b>
<b>model-no.:</b>	7654
<b>color:</b>	graphit,
<b>mainfabric:</b>	50 % Cotton, 49 % Polyester, 1 % anstistatic fibers, 345 gsm
<b>lining:</b>	88 % Cotton, 12 % Polyamid 200 gsm
<b>Size:</b>	S-6XL
<b>article-no.:</b>	<b>88492</b> <b>graphit</b>
<b>Sales unit:</b>	1 pcs.

#### PPE-category III

EN ISO 11611:2015



class 1 - A1

EN ISO 11612:2015



A1,B1,C1,F1

EN 1149-5:2018



IEC 61482-2:2018



APC=1 / APC=2  
front and sleeves



INDUSTRIALWASH ●●

#### product description:

Multifunctional waist jacket in an ergonomic fit that meets a wide variety of challenges (for example, handling with hazards of arc).

- regular fit
- with attached reflex elements
- Front center zipper with panel
- 2 side pockets with concealed zippers
- 1 breast pocket with concealed velcro closure
- Stretch inserts in the back
- extended back part

**Note: This protective clothing must always be worn as a suit in combination with a jacket with dungarees / trousers and closed!**

Successful test with increased arc energies of 558.7 - 564.8 kJ for jacket with shirt model 7937 in accordance with IEC 61482-1-2 at 11.7 kA / 0.5 s (tested at Eurotest)

**However only in the area of the upper front body, sleeves and shoulders.**

#### IEC 61482-1-1 ATPV

in two-layer areas of the jacket (front and sleeves) = 46 cal/cm<sup>2</sup>

in two-layer areas of the jacket (front and sleeves) in combination with Polo Shirt 7937 = 62 cal/cm<sup>2</sup>

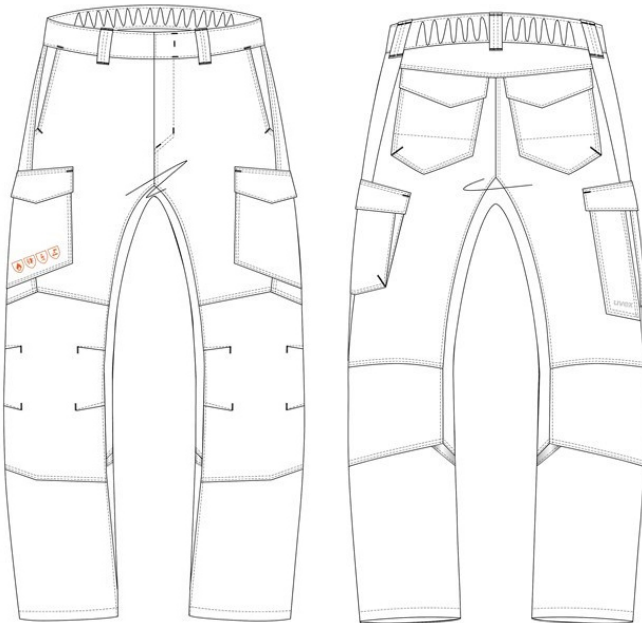
in two-layer areas of the jacket (front and sleeves) in combination with Shirt 7421 = 57 cal/cm<sup>2</sup>

The declaration of conformity for this product can be viewed at: [uvex-safety.com/ce](http://uvex-safety.com/ce)

**Pay attention to the user information!**

### uvex suXeed arc

### Internal arc, heat, flameprotection + antistatic



<b>trousers</b>	<b>uvex suXeed arc</b>
<b>model-no.:</b>	7655
<b>colour:</b>	graphit
<b>Main fabric:</b>	50 % Cotton, 49 % Polyester, 1 % antistatic fibers, 345 gsm
<b>lining:</b>	88 % Cotton, 12 % Polyamid, 200 gsm
<b>sizes:</b>	23-32, 42-66, 90-110
<b>article-no.:</b>	<b>88493</b>   <b>graphit</b>
<b>Sales unit:</b>	1 pcs.

#### PPE-category III

EN ISO 11611:2015



class 1 - A1

EN ISO 11612:2015



A1,B1,C1,F1

EN 1149-5:2018



IEC 61482-2:2018



APC=1 / APC=2  
front



#### product description:

Multifunctional trousers in ergonomic fit that meet a wide variety of challenges for example, handling with hazards of arc).

- concealed button, attached reflex elements
- front fly with zipper
- 2 side pockets with slant intervention and consealed zippers
- 2 leg pockets:

left: leg pocket with inner cell phone pocket, folding at the back

right: leg pocket, additional rule pocket, flaps with concealed velcro fastener

- 2 back pockets with reinforcement and flaps with concealed velcro closure
- knee-forming, knee pockets inside

**Notes: This protective clothing must always be worn as a suit in combination with a jacket with dungarees / trousers and closed! However, APC=2 only applies to the area of the front trousers.**

#### IEC 61482-1-1 ATPV

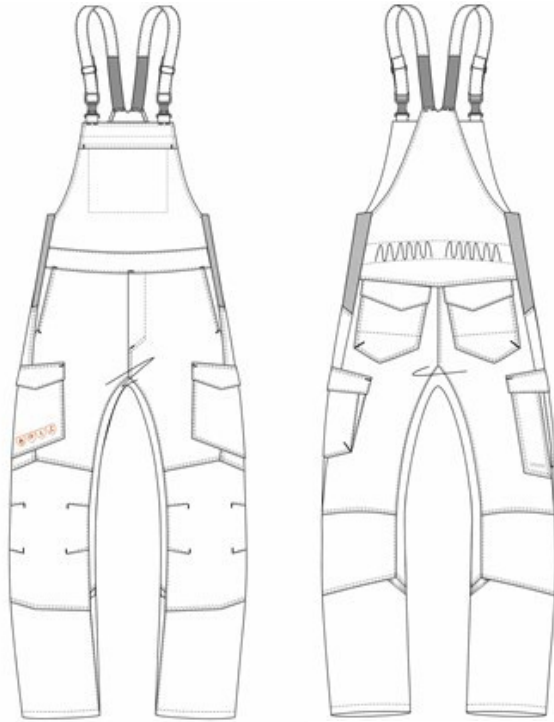
in two-layer areas of the jacket (front and sleeves) = 46 cal/cm<sup>2</sup>

The declaration of conformity for this product can be viewed at: [uvex-safety.com/ce](http://uvex-safety.com/ce)

**Pay attention to the user information!**

### uvex suXXeed arc

### Internal arc, heat, flameprotection + antistatic



#### dungarees uvex suXXeed arc

model-no.: 7656

colour: graphit

Main fabric: 50 % Cotton, 49 % Polyester,  
1 % antistatic fibers, 345 gsm

lining: 88 % Cotton, 12 % Polyamid,  
200 gsm

sizes: 23-32, 42-66, 90-110

article-no.: **88494** **graphit**

Sales unit: 1 pcs.

#### PPE-category III

EN ISO 11611:2015



class 1 - A1

EN ISO 11612:2015



A1,B1,C1,F1

EN 1149-5:2018



IEC 61482-2:2018



APC= 1 / APC=2  
front



#### product description:

Multifunctional dungarees in ergonomic fit that meet a wide variety of challenges (for example, handling with hazards of arc)

- attached reflex elements
- front fly with zipper
- 2 side pockets with slant intervention and bib pocket with concealed zippers
- 2 leg pockets:

left: leg pocket with inner cell phone pocket, folding at the back

right: leg pocket, additional rule pocket, flap with concealed velcro fastener

- 2 back pockets with reinforcement and flaps with concealed velcro closure
- Knee-forming, knee pockets inside

**Note: This protective clothing must always be worn as a suit in combination with a jacket with dungarees / trousers and closed! However, APC=2 only applies to the area of the front trousers.**

#### IEC 61482-1-1 ATPV

in two-layer areas of the jacket (front and sleeves) = 46 cal/cm<sup>2</sup>

The declaration of conformity for this product can be viewed at: [uvex-safety.com/ce](http://uvex-safety.com/ce)

**Pay attention to the user information!**

### uvex suXXeed arc

### Internal arc, heat, flameprotection + antistatic



model: 7654

article-no. **88492** | **graphit**



model: 7937

article-no.:	17237	orange
	17238	grey
	17239	royal blue

#### Optimum compatibility within the product family

The uvex suXXeed arc family provides reliable protection against thermal hazards. In combination with the internal-arc-shirt our products reach even higher protection classes.



+



=

Highest impact energy

model-no.: 7654

article-no.: **88492** | **graphit**

model-no: 7397

article-no.:	17237	orange
	17238	grey
	17239	royal blue

#### Note:

This protective clothing must always be worn as a suit in combination with a jacket with dungaree/ trousers and closed! ! Jacket in combination with the flame protection shirt model 7937 results in arc protection with the highest impact energy. However, this only applies to the area of the front body, sleeves and shoulders!

**Pay attention to the user information!**

**uvex suXXeed arc****Internal arc, heat, flameprotection + antistatic****model-no: 7655****article-no.: 88493 graphit****model-no: 7656****article-no.: 88494 graphit****Note:**

This protective clothing must always be worn as a suit in combination with a jacket with dungaree/ trousers and closed! ! Jacket in combination with the flame protection shirt model 7937 results in arc protection with the highest impact energy. However, this only applies to the area of the front body, sleeves and shoulders!

**Pay attention to the user information!**