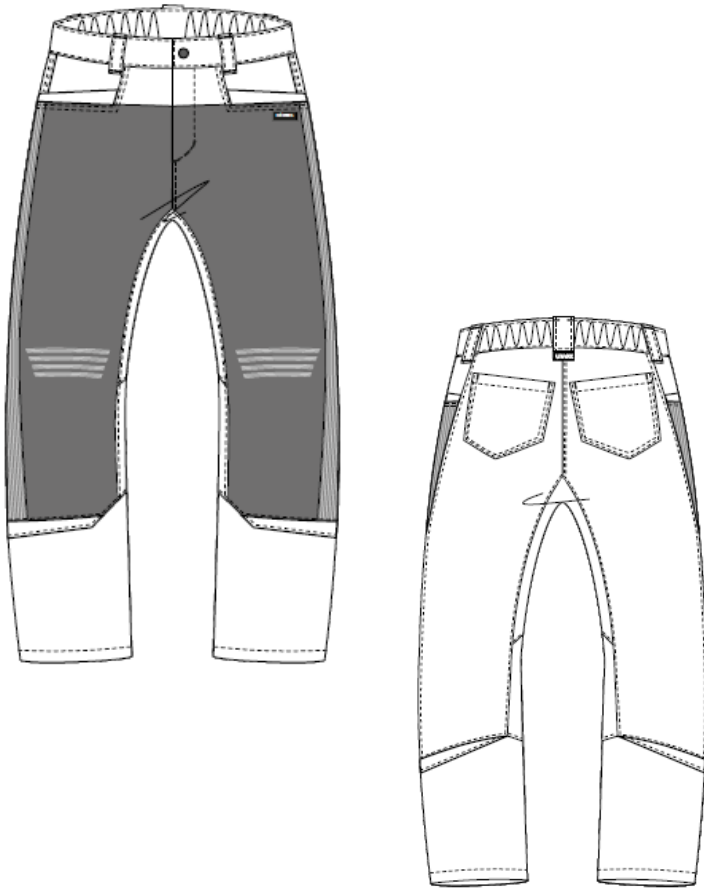


### uvex cut Cut protection



<b>Trousers</b>	<b>uvex cut quatroxflex</b>
<b>model:</b>	3850
<b>colour:</b>	black, anthrazit (knitted parts)
<b>material:</b>	main fabric: 65 % Polyester, 35 % cotton approx. 245 g/m <sup>2</sup> , 3/4 sleeves made of cut protection material
<b>size:</b>	42-64, 90-110
<b>article-no.:</b>	17270
<b>sales unit:</b>	1 part

#### according to

**EN 388:2016+A1:2018**



cut protection  
level D



INDUSTRIALWASH ● ○

#### product description:

Sportive-fitting trousers made of breathable functional fibre with cut protection knitted areas in high cut resistance level. The protective function and comfort remain after many washes .

- Two front and back pockets
- Knitted inserts for a cross stretch along the side seam
- functional, extreme elastically stripes on knee part
- cut protection made of Bamboo TwinFlex® Material: extremely durable on outside, pleasantly cooling on inside injuries and achieves performance level D in accordance with EN 388:2016+A1:2018 tested according to ISO 13977:1999

**uvex cut  
Cut protection****uvex cut quatreflex****Model-nr.:** 3850**Art.-Nr.:** 17270