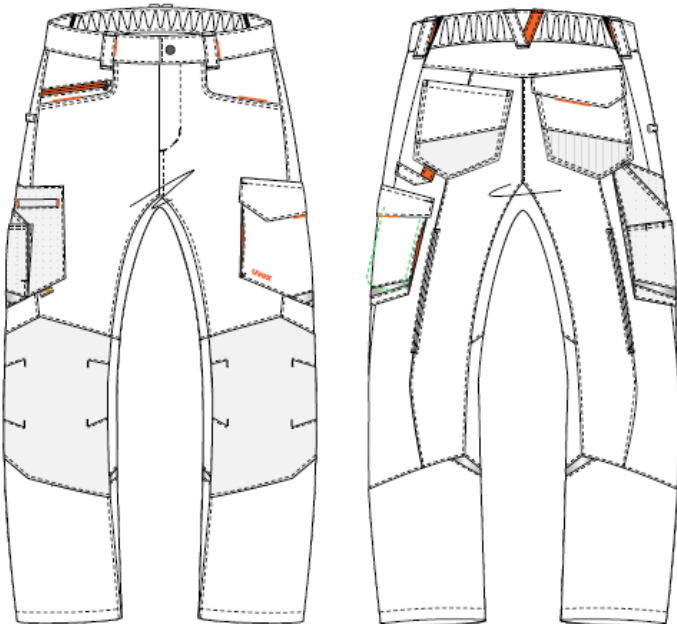


### workwear uvex suXNeed



#### Cargo pants regular fit

**model-no.:** 8997

**colour:** navy

graphite

**material:** 65 % Polyester, 35 % Cotton

245 g/m<sup>2</sup>

**size:** 42-66,90-110,23-32

**sales unit:** 1 part

#### PPE-category II

EN 14404



Type 2-Level 1



INDUSTRIAL WASH ●●

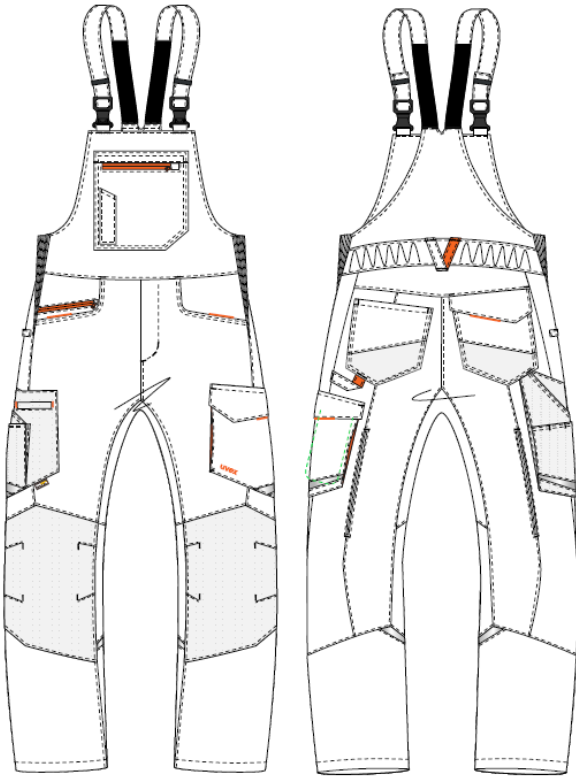
#### product description:

- Innovative style and a new fit for every application with a flexible waistband
- Insert in crotch area
- Cordura insets on heavy used places such as: knees, right leg pocket and left pocket
- practical bags for the working tools,
- EN 14404:2004 + A1:2010 Type 2 in connection with kneepads 9868900
- Oeko-Tex® Standard 100

The declaration of conformity for this product can be viewed at: [uvex-safety.com/ce](http://uvex-safety.com/ce)

**OEKO-TEX®**  
CONFIDENCE IN TEXTILES  
**STANDARD 100**  
S20-0516 HOHENSTEIN HTTI  
Tested for harmful substances.  
[www.oeko-tex.com/standard100](http://www.oeko-tex.com/standard100)

### workwear uvex suXNeed



#### Dungarees

**model-no.:** 8998

**colour:** navy  
graphite

**material:** 65 % Polyester, 35 % Cotton  
245 g/m<sup>2</sup>

**size:** 42-66,90-110,23-32

**sales unit:** 1 part

#### PPE-category II

EN 14404



Type 2-Level 1



#### product description:

- Innovative style and a new fit for every application with laterally stretch inserts
- Insert in crotch area
- Cordura insets on heavy used places such as: knees, right leg pocket and left pocket
- practical bags for the working tools,
- EN 14404:2004 + A1:2010 Type 2 in connection with kneepads 9868900
- Oeko-Tex® Standard 100

The declaration of conformity for this product can be viewed at: [uvex-safety.com/ce](http://uvex-safety.com/ce)



### workwear uvex suXNeed



**Model-nr.:** 8997  
**Art.-Nr.:** 89668 (navy)  
89669 (graphite)



**Model-Nr.:** 8998  
**Art.-Nr.:** 89702 (navy)  
89703 (graphite)

With kneepockets  
(suitable kneepads available as  
Art.-Nr. 9868900)