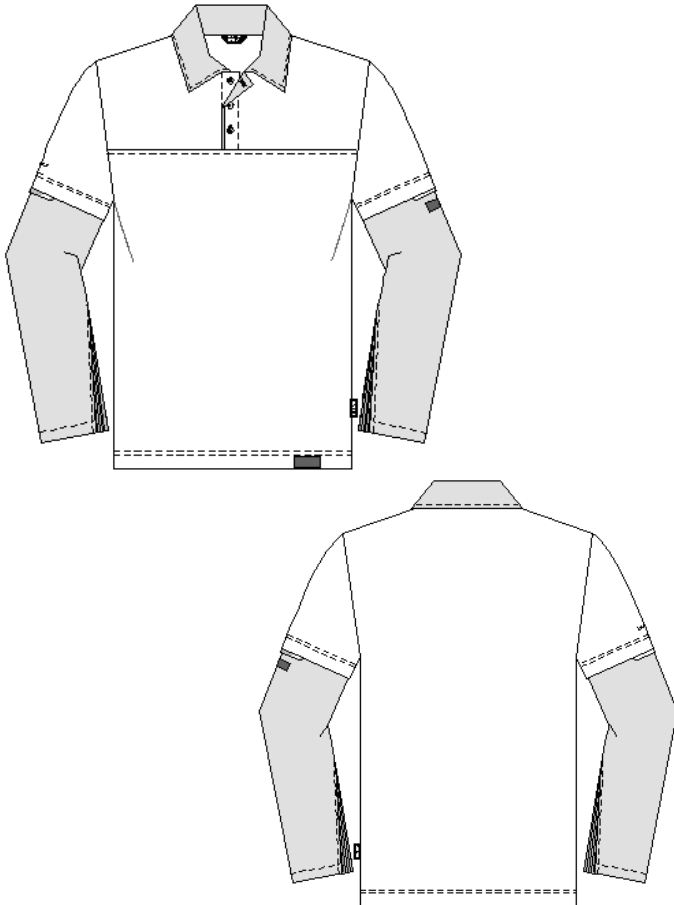


### uvex textreme cut Cut protection



#### Polo shirt uvex cut

model-no.: 7437

colour: light grey, sleeves/collar dark grey

material: Polo shirt: 55 % cotton, 45 % polyester, approx. 185 g/m<sup>2</sup>, 3/4 sleeves made of cut protection material,

size: S - XXXL

article-no.: 89881

sales unit: 1 part

according to

**EN 388:2016+A1:2018**



cut protection  
level D

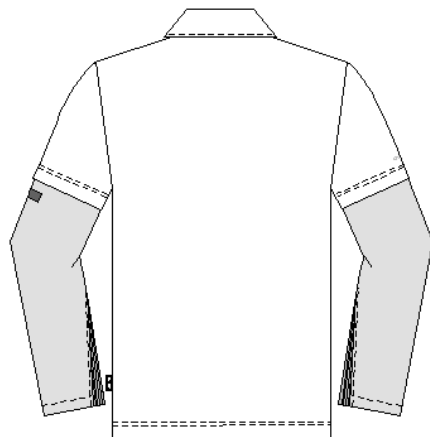
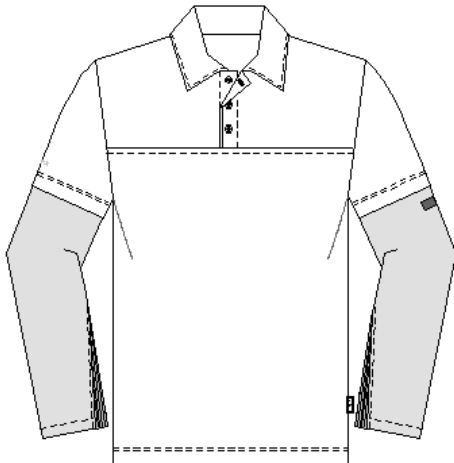


#### Product description:

fitting piqué polo shirt made of breathable functional fibre with cut protection sleeves in high cut resistance level. The protective function and comfort remain after many washes .

- 3-button placket with contrasting underflap, reflective stripes on the sleeves
- cut protection made of Bamboo TwinFlex® Material: extremely durable on outside, pleasantly cooling on inside injuries and achieves performance level D in accordance with EN 388:2016+A1:2018 tested according to ISO 13977:1999

### uvex textreme cut Cut protection



#### Polo shirt uvex cut

**model-no.:** 7438

**colour:** blue, sleeves dark grey

**material:** Polo shirt: 100 % cotton, approx. 230 g/m<sup>2</sup>, 3/4 sleeves made of cut protection material,

**size:** S - XXXL

**article-no.:** 89882

**sales unit:** 1 part

#### according to

**EN 388:2016+A1:2018**



cut protection level D

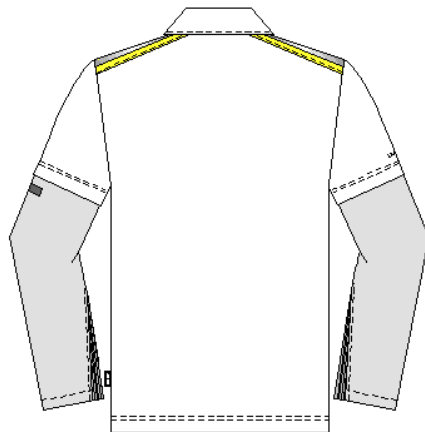
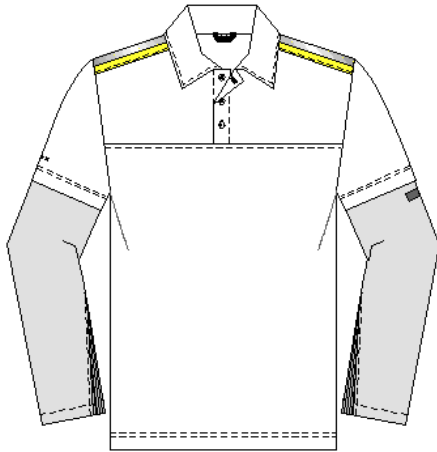


#### Product description:

fitting polo shirt made cotton piqué with cut protection sleeves in high cut resistance level. The protective function and comfort remain after many washes.

- 3-button placket
- cut protection made of Bamboo TwinFlex® Material: extremely durable on outside, pleasantly cooling on inside injuries and achieves performance level D in accordance with EN 388:2016+A1:2018 tested according to ISO 13977:1999

### uvex textreme cut Cut protection



**Polo shirt uvex cut**

**model-no.:** 7439

**colour:** orange, sleeves dark grey

**material:** Polo shirt: 54 % modacryl, 44 % cotton, 2 % antistatic, approx. 270 g/m<sup>2</sup>, 3/4 sleeves made of cut protection material,

**size:** S - XXXL

**article-no.:** 89883

**sales unit:** 1 part

**according to**

**EN 388:2016+A1:2018**



cut protection  
level D



**Product description:**

fitting polo shirt made of flame-retardant single jersey with cut protection sleeves in high cut resistance level. The protective function and comfort remain after many washes.

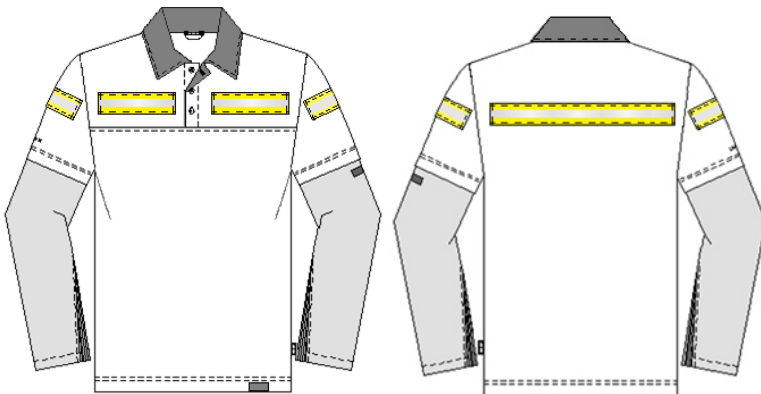
- 3-button placket
- flame retardant reflective stripes on shoulders
- cut protection made of Bamboo TwinFlex® Material: extremely durable on outside, pleasantly cooling on inside injuries and achieves performance level D in accordance with EN 388:2016+A1:2018 tested according to ISO 13977:1999

uvex textreme cut  
**Cut protection**



model-no.: 7437

article-no.: 89881



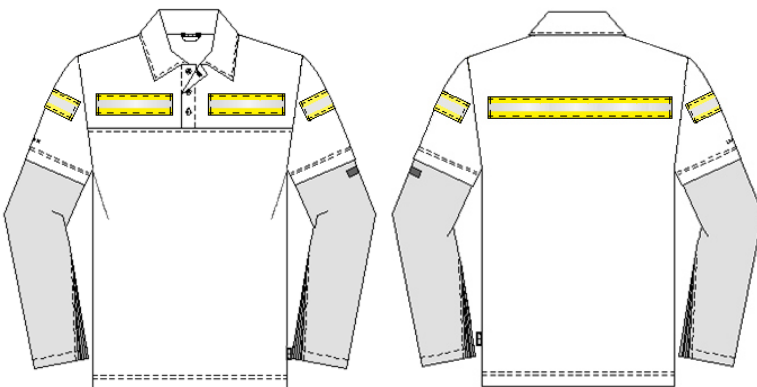
**Reflective stripes as  
possible Add-on variant**

### uvex textreme cut Cut protection



model-no.: 7438

article-no.: 89882



**Reflective stripes as possible Add-on variant**

**uvex textreme cut  
Cut protection****model-no.:** 7439**article-no.:** 89883

Flame retardant reflective stripes  
in the shoulder area for enhanced  
visibility