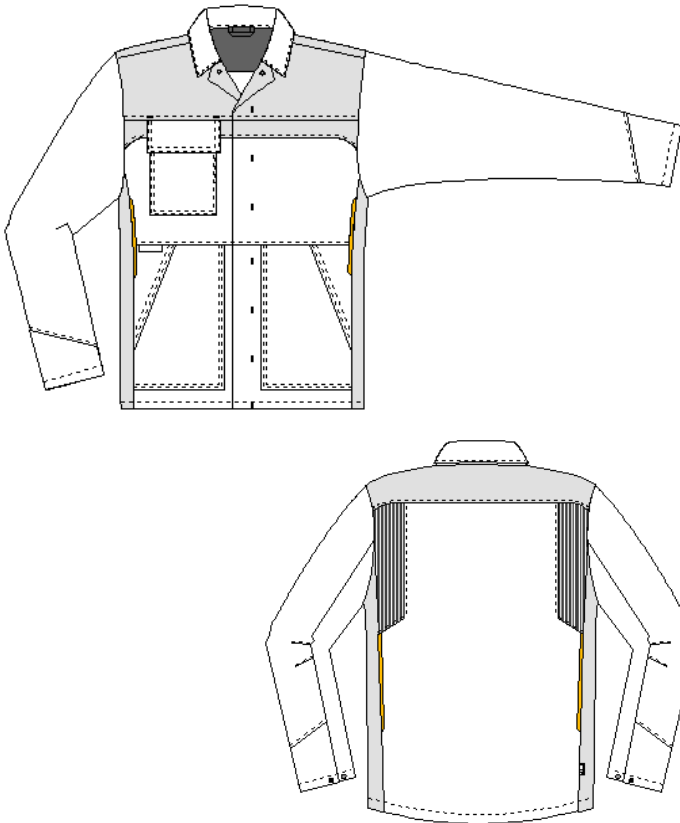


Protective clothing protection perfect Internal arc, heat, flame protection banwear+



Jacket uvex banwear+
model-no.: 8895
colour: royal blue / grey
material: 50% cotton, 49% polyester, 1% antistatic fibres, approx. 340 g/m², satin weave
size: 40/42- 64/66, 90/94- 106/110
article-no.: 98417
sales unit: 1 part

PPE-category III

EN ISO 11611:2015



class 1 - A1

EN ISO 11612:2015



A1,B1,C1,E1,F1

EN 1149-5:2018



IEC 61482-2:2018



APC 1



product description:

Two-Tone jacket with yellow piping in a new ergonomic fit from the trusted protection fabric banwear+ with integrated stretch zones.

- town down collar, concealed button facing + metal press studs
- 1 chest pocket with flap and metal press studs, left Napoleon pocket with Velcro
- 2 side pockets with concealed opening and metal press studs
- ergonomically shaped sleeves, cuffs with adjustable width metal press studs
- stretch insert in the shoulder area
- extended back, leasing mark
- contrast stitching, label with pictograms

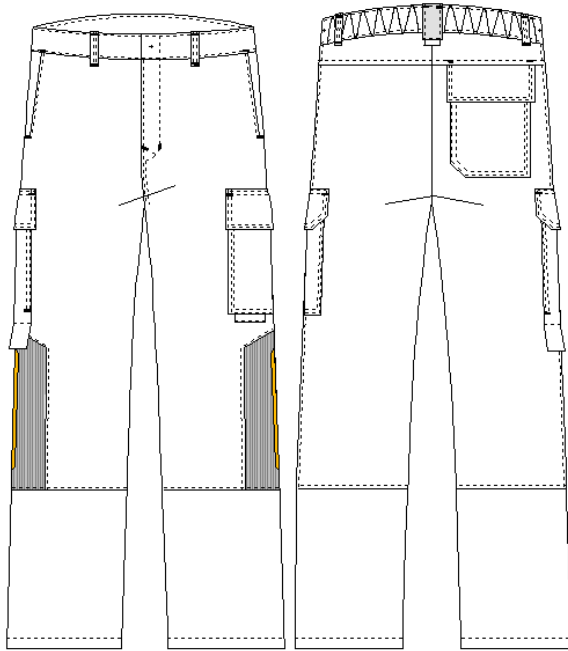
Note: This protective clothing must always be worn as a suit jacket in combination with dungarees / trousers and be worn closed!

The declaration of conformity for this product can be viewed at: uvex-safety.com/ce



Pay attention to the user instruction!

Protective clothing protection perfect Internal arc, heat, flame protection banwear+



Trousers	uvex protection perfect fire + arc
model-no.:	8897
colour:	royal blue / grey
material:	50 % cotton, 49 % polyester, 1 % antistatic fibres, approx. 340 g/m ² , satin weave
size:	42-64, 90-110
article-no.:	98422
sales unit:	1 part

PPE-category III

EN ISO 11611:2015



class 1 - A1

EN ISO 11612:2015



A1,B1,C1,E1,F1

EN 1149-5:2018



IEC 61482-1-2:2018



APC 1



product description:

Trendy trousers in a new, ergonomic fit from the trusted protection fabric banwear+ with integrated stretch zones.

- waistband with concealed button, back waistband with adjustable elastic
- trousers fly with plastic zipper
- 2 integrated side pockets
- 1 hip pocket, right with flap and metal press studs
- ruler pocket right with flap and Velcro
- 1 thigh pocket left with metal press studs
- stretch insert at the knee
- contrast stitching, label with pictograms

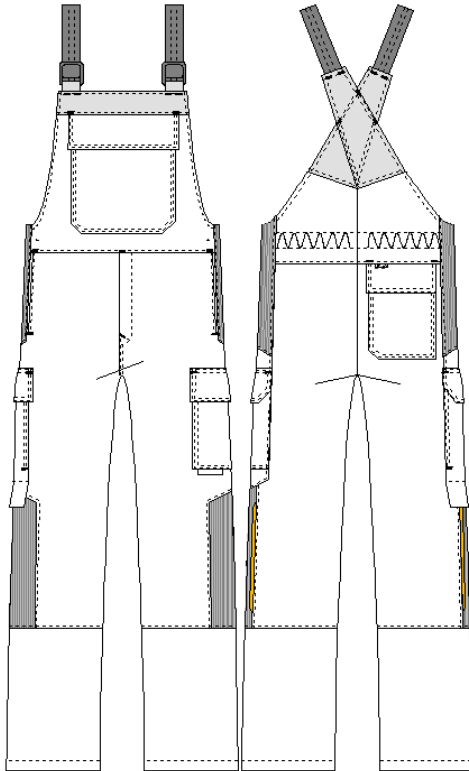
Note: This protective clothing must always be worn as a suit jacket in combination with dungarees / trousers and be worn closed!

The declaration of conformity for this product can be viewed at: uvex-safety.com/ce



Pay attention to the user instruction!

Protective clothing protection perfect Internal arc, heat, flame protection banwear+



Dugarees uvex banwear+
model-no.: 8896
colour: royal blue / grey
material: 50 % cotton, 49 % polyester, 1 % antistatic fibres, approx. 340 g/m², satin weave
size: 40/42-64/66, 90/94-106/110
article-no.: 98421
sales unit: 1 part

PPE-category III

EN ISO 11611:2015



class 1 - A1

EN ISO 11612:2015



A1,B1,C1,E1,F1

EN 1149-5:2018



IEC 61482-2:2018



APC 1



product description:

Fashionable dungarees in a new, ergonomic fit from the trusted protection fabric banwear+ with integrated stretch zones.

- elastic straps with plastic buckles,
- extended back section with crossed straps
- dungarees fly with plastic zipper
- stretch inserts in the waistband, back waistband with adjustable elastic
- 1 bib pocket with flap + metal press studs, 2 integrated side pockets
- 1 hip pocket and 1 thigh pocket left with flap and metal press studs
- ruler pocket right with flap and Velcro
- stretch insert at the knee,
- contrast stitching, label with pictograms

Note: This protective clothing must always be worn as a suit jacket in combination with dungarees / trousers and be worn closed!

The declaration of conformity for this product can be viewed at: uvex-safety.com/ce



Pay attention to the user instruction!

**Protective clothing protection perfect
Internal arc, heat, flame protection banwear+****model-no.:** 8895**article-no.:** 98417**model-no.:** 8896**article-no.:** 98421**model-no.:** 8897**article-no.:** 98422**Note:****This protective clothing must always be worn as a suit jacket in combination with dungarees / trousers and be worn closed!****Pay attention to the user instruction!**