

uvex suXXeed multifunction

Internal arc, heat, flame and chemical protection



Jacket uvex suXXeed multifunction

model-no.: 7475

color: graphit, night blue

composition: inherently flame retardant
49 % PPAN-FR, 42 % cotton,
5 % para-aramid, 3 % polyamide,
1 % carbon, approx. 300 g/m²

sizes: S – 6XL

article-no.:

88281

night blue

88282

graphit

Sales unit: 1 pcs.

PPE-category III

EN ISO 11611:2015



class 1 - A1

EN 1149-5:2018



EN 13034:2005+A1:2009



Type 6

EN ISO 11612:2015



A1,B1,C1,E2,F1

IEC 61482-2:2018



APC=1



product description:

Multifunctional waist jacket in an ergonomic fit that meets a wide variety of challenges (for example, handling low hazard chemicals or liquid iron - code E2).

- fit like suXXeed and suXXeed basic
- with attached reflex elements
- Front center zipper with panel
- 2 side pockets with concealed zipper
- 1 breast pocket with concealed velcro closure
- Stretch inserts in the back and under sleeves
- extended back part
- Optional with Patch emblem (released patch emblem FR)

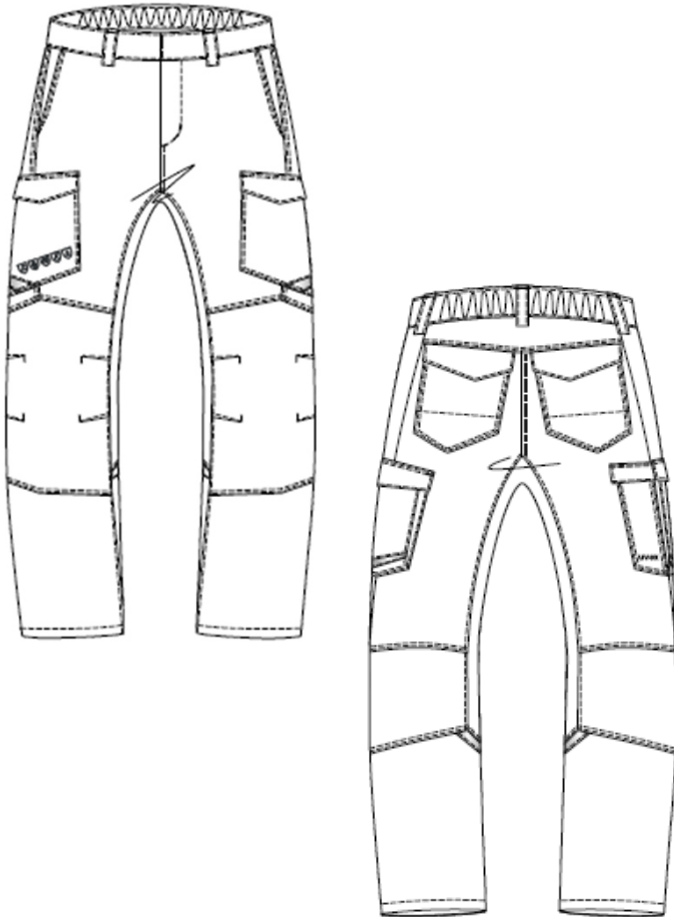
Note: This protective clothing must always be worn as a suit in combination with a jacket with dungarees / trousers and closed! Jacket in combination with the flame protection shirt 7829/ 7937/ 7421 results in arc protection APC = 2. However, this only applies to the area of the upper body.

The declaration of conformity for this product can be viewed at: uvex-safety.com/ce

Pay attention to the user information!

uvex suXXeed multifunction

Internal arc, heat, flame and chemical protection



trousers uvex suXXeed multifunction

model-no.: 7476

colour: night blue, graphit

material: inherently flame retardant
49 % PPAN-FR, 42 % cotton,
5 % para-aramid, 3 % polyamide,
1 % carbon, approx. 300 g/m²

sizes: 23-32, 42-66, 90-110

article-no.:

88283

night blue

88284

graphit

Sales unit: 1 pcs.

PPE-category III

EN ISO 11611:2015



class 1 - A1

EN 1149:2018



EN 13034:2005+A1:2009



Type 6

EN ISO 11612:2015



A1,B1,C1,E2,F1

IEC 61482-2:2018



APC=1



product description:

Multifunctional trousers in ergonomic fit that meet a wide variety of challenges (for example, handling low hazard chemicals or liquid iron - code E2).

- concealed button, attached reflex elements
- front fly with zipper
- 2 side pockets with slant intervention and consealed zippers
- 2 leg pockets: left: leg pocket with inner cell phone pocket, folding at the back
right: leg pocket, additional rule pocket, flaps with consealed velcro fastener
- 2 back pockets with reinforcement and flaps with consealed velcro closure
- knee-forming, knee pockets inside
- Optional with Patch emblem (released patch emblem FR)

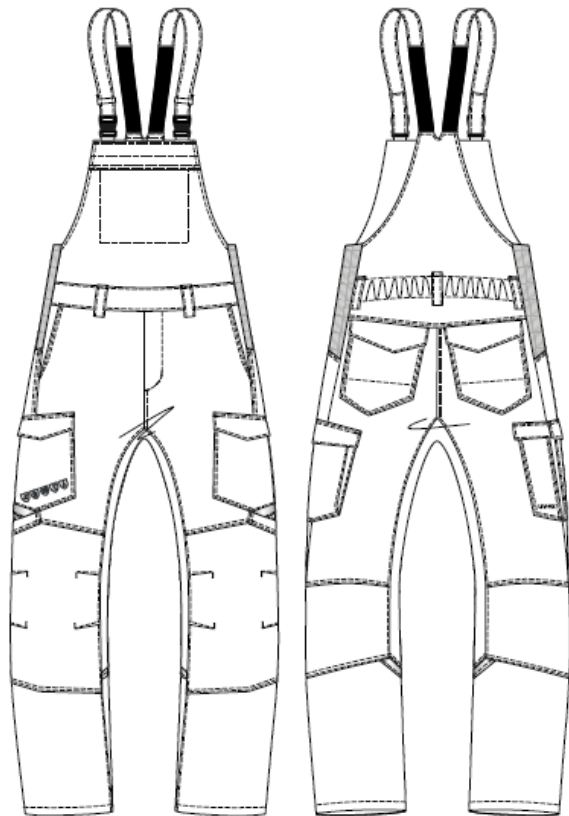
Notes: This protective clothing must always be worn as a suit in combination with a jacket with dungarees / trousers and closed! Jacket in combination with the flame protection shirt 7829/ 7937/ 7421 results in arc protection APC = 2. However, this only applies to the area of the upper body.

The declaration of conformity for this product can be viewed at: uvex-safety.com/ce

Pay attention to the user information!

uvex suXXeed multifunction

Internal arc, heat, flame and chemical protection



dungarees uvex suXXeed multifunction

model-no.: 7478

colour: night blue, graphit

material: inherently flame retardant
49 % PPAN-FR, 42 % cotton,
5 % para-aramid, 3 % polyamide,
1 % carbon, approx. 300 g/m²

sizes: 23-32, 42-66, 90-110

article-no.:

88285

nachtblau

88286

graphit

Sales unit: 1 pcs.

PPE-category III

EN ISO 11611:2015



class 1 - A1

EN 1149-5:2018



EN 13034:2005+A1:2009



Type 6

EN ISO 11612:2015



A1,B1,C1,E2,F1

IEC 61482-2:2018



APC= 1



product description:

Multifunctional dungarees in ergonomic fit that meet a wide variety of challenges (for example, handling low hazard chemicals or liquid iron - code E2).

- attached reflex elements
- front fly with zipper
- 2 side pockets with slant intervention and bib pocket with consealed zippers
- 2 leg pockets: left: leg pocket with inner cell phone pocket, folding at the back
right: leg pocket, additional rule pocket, flap with concealed velcro fastener
- 2 back pockets with reinforcement and flaps with concealed velcro closure
- Knee-forming, knee pockets inside
- Optional with Patch emblem (released patch emblem FR)

Note: This protective clothing must always be worn as a suit in combination with a jacket with dungarees / trousers and closed! Jacket in combination with the flame protection shirt 7829/ 7937/ 7421 results in arc protection APC = 2. However, this only applies to the area of the upper body.

The declaration of conformity for this product can be viewed at: uvex-safety.com/ce

Pay attention to the user information!

uvex suXXeed multifunction

Internal arc, heat, flame and chemical protection



Modell: 7475

Art.-Nr.:	88281	night blue
	88282	graphit



model: 7937

Article-no.:	17237	orange
	17238	grau
	17239	kornblau



Optimum compatibility within the product family

The uvex suXXeed multifunction family provides reliable protection against thermal hazards. In combination with the internal-arc-shirt our products reach even higher protection classes.



+



=

Internal arc
APC= 2

model-no.: 7475

article-no.:

88281	night blue
88282	graphit

model-no: 7397

article-no.:

17237	orange
17238	grey
17239	royal blue

Note:

This protective clothing must always be worn as a suit in combination with a jacket with dungaree/ trousers and closed! ! Jacket in combination with the flame protection shirt model 7829/ 7937/ 7421 results in arc protection APC = 2. However, this only applies to the area of the upper body!

Pay attention to the user information!

uvex suXXeed multifunction

Internal arc, heat, flame and chemical protection



model: 7475

article-no.:

88281	night blue
88282	graphit

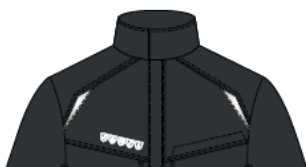
model: 7421

Article-no.:

89312	marine
89409	anthrazit melange

Optimum compatibility within the product family

The uvex suXXeed multifunction family provides reliable protection against thermal hazards. In combination with the internal-arc-shirt our products reach even higher protection classes.



+



=

Internal arc
APC= 2

model-no.: 7475

article-no.:

88281	night blue
88282	graphit

model: 7421

Article-no.:

89312	marine
89409	anthrazit melange

Note:

This protective clothing must always be worn as a suit in combination with a jacket with dungaree/ trousers and closed! ! Jacket in combination with the flame protection shirt model 7829/ 7937/ 7421 results in arc protection APC = 2. However, this only applies to the area of the upper body!

Pay attention to the user information!

uvex suXXeed multifunction**Internal arc, heat, flame and chemical protection****model-no:** 7476**article-no.:** 88283 night blue

88284 graphit

**model-no:** 7478**article-no.:** 88285 night blue

88286 graphit

Note:**This protective clothing must always be worn as a suit jacket in combination with dungarees / trousers and be closed!****Pay attention to the user information!**