

## 9710 Foam insert screwdriver set 1, 18 pieces

Kraftform Plus – Series 900



**EAN:** 4013288225122

**Part number:** 05150101001

**Article number:** 9710

**Size:** 405x360x60 mm

**Weight:** 1966 g

**Country of origin:** CZ

**Customs tariff number:** 82054000

- Durable foam insert, each tool has its own place; two-coloured, missing tools will quickly be noticed
- High-quality, durable foam insert without chemical vapours
- Optimum fit for the best possible removal of the tools from the foam insert
- Water- and oil-repellent, low maintenance and easy to clean
- Protection of the tool from dirt and impact
- 2 chiseldrivers for screwdriving, chiseling, mortising and slackening stuck screws
- 8 Kraftform Plus screwdrivers with hard zones for high working speeds and soft handle zones for a high torque transfer
- 2 Kraftform Plus VDE screwdrivers with insulated blades for safe working up to 1,000 volt

Durable foam insert; two-coloured for quick identification of missing parts; suitable for the Tool Rebel roller cabinet, equipped with 16 Wera Kraftform screwdrivers (workshop, VDE, chiseldriver, Micro) as well as 2 screw grippers.



### Web link

[https://products.wera.de/en/screwdrivers\\_kraftform\\_plus\\_series\\_900\\_9710.html](https://products.wera.de/en/screwdrivers_kraftform_plus_series_900_9710.html)

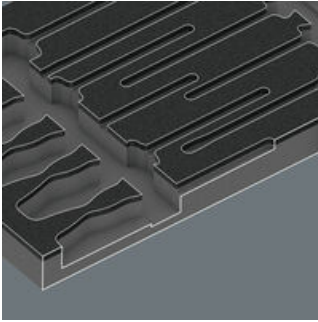
Wera - 9710

05150101001 - 4013288225122

Wera Werkzeuge GmbH  
Korzerter Straße 21-25  
D-42349 Wuppertal  
Tel: +49 (0)2 02 / 40 45-0  
E-Mail: [info@wera.de](mailto:info@wera.de)

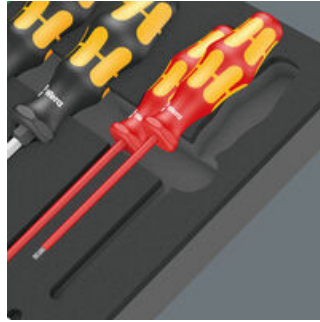
## Kraftform Plus – Series 900

### Safe storage and quick overview



The tools sit securely in the foam thanks to precise contour cutouts, but are easy to remove. The carefully designed arrangement of the tools ensures space-saving storage and quick access to each tool.

### Two-coloured foam insert



After removing the tool the light grey second foam becomes visible and therefore missing tools are quickly identified.

### Series 900 – the Chiseldriver



The chiseldriver is the solution for jobs that require more than just screwdriving. For fastening, chiselling and loosening seized screws or hose clamps. With an integrated impact cap that extends service life and reduces the risk of splintering. With a pound-thru hexagon blade made from high-grade material for - zero-loss transfer of high forces when struck with a hammer. The tough viscous tempered material prevents the blade from splintering or breaking. More TORQUE can be transferred by attaching an open-jawed or ring spanner to the integrated hexagon bolster.

### Lasertip



A precisely-focused laser creates a sharp-edged surface structure. Wera Lasertip "bites" itself into the screw head and prevents any slips out of the recess. It is available for screwdrivers for slotted, Phillips and Pozidriv screws.

### Compact shape



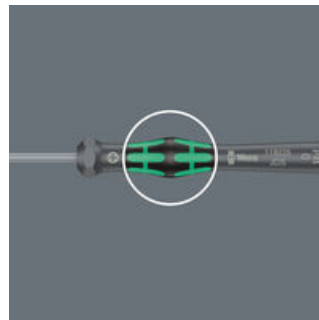
With its compact handle shape and the short blade, the Kraftform Stubbies are particularly suitable for working in confined screwdriving situations.

### Kraftform Micro handle



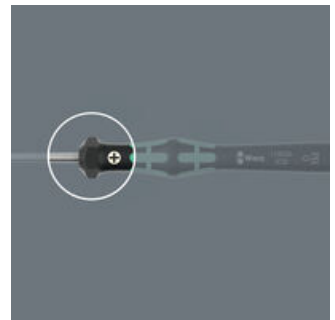
Multi-component screwdriver handle for ergonomic working.

### The power zone



The power zone has integrated soft zones near the blade tip to ensure high torque transfer for loosening or tightening screws without losing contact with the screw.

### The precision zone



The precision zone directly above the blade gives the user a better feel for the right rotation angle during fine adjustment work.

### Web link

[https://products.wera.de/en/screwdrivers\\_kraftform\\_plus\\_series\\_900\\_9710.html](https://products.wera.de/en/screwdrivers_kraftform_plus_series_900_9710.html)

Wera - 9710

05150101001 - 4013288225122

Wera Werkzeuge GmbH

Korzerter Straße 21-25

D-42349 Wuppertal

Tel: +49 (0)2 02 / 40 45-0

E-Mail: [info@wera.de](mailto:info@wera.de)



## 9710 Foam insert screwdriver set 1, 18 pieces

### Kraftform Plus – Series 900





#### Set contents:


##### 932 A Screwdriver for slotted screws, 1 x 5.5 x 100 mm

	05018264001	1x	1 x 5.5 x 100 mm
	05018266001	1x	1.2 x 7 x 125 mm

##### 350 PH Screwdriver for Phillips screws, PH 1 x 80 mm



	05008710001	1x	PH 1 x 80 mm
	05008720001	1x	PH 2 x 100 mm
	05008735001	1x	PH 3 x 150 mm

##### 350 PH Phillips-head Stubby/carburetor screwdriver, PH 2 x 25 mm



	05008851001	1x	PH 2 x 25 mm
---	-------------	----	--------------




##### 355 PZ Screwdriver for Pozidriv screws, PZ 1 x 80 mm

	05009310001	1x	PZ 1 x 80 mm
	05009315001	1x	PZ 2 x 100 mm

##### 335 Screwdriver for slotted screws, 0.8 x 4 x 100 mm


	05110004001	1x	0.8 x 4 x 100 mm
	05110007001	1x	1 x 5.5 x 125 mm

##### 334 Screwdriver for slotted screws, 1.2 x 6.5 x 150 mm

	05110010001	1x	1.2 x 6.5 x 150 mm
---	-------------	----	--------------------




##### 335 Stubby/carburetor screwdriver, 1 x 5.5 x 24.5 mm

	05008842001	1x	1 x 5.5 x 24.5 mm
---	-------------	----	-------------------




##### 2050 PH Screwdriver for Phillips screws for electronic applications, PH 0 x 40 mm

	05118026001 <sup>1)</sup>	1x	PH 0 x 40 mm
---	---------------------------	----	--------------





1) Size 0 modified according to JCS 0 (Japanese Camera Industrial Standard)

##### 2035 Screwdriver for slotted screws for electronic applications, 0.40 x 2.5 x 80 mm

	05118008001	1x	0.40 x 2.5 x 80 mm
---	-------------	----	--------------------



##### 160 i VDE Insulated screwdriver for slotted screws, 0.4 x 2.5 x 80 mm

	05006100001 <sup>1)</sup>	1x	0.4 x 2.5 x 80 mm
	05006110001 <sup>1)</sup>	1x	0.6 x 3.5 x 100 mm

1) without Lasertip

#### Web link

[https://products.wera.de/en/screwdrivers\\_kraftform\\_plus\\_series\\_900\\_9710.html](https://products.wera.de/en/screwdrivers_kraftform_plus_series_900_9710.html)

Wera - 9710

05150101001 - 4013288225122

Wera Werkzeuge GmbH

Korzerter Straße 21-25

D-42349 Wuppertal

Tel: +49 (0)2 02 / 40 45-0

E-Mail: [info@wera.de](mailto:info@wera.de)

## 9710 Foam insert screwdriver set 1, 18 pieces

Kraftform Plus – Series 900



### 1441 SB Screw gripper attachment for screwdriver blades, long bits and L-keys, with holding function for screws, 4.5-6 x 41 mm

05073681001

1x 4.5-6 x 41 mm



### 1442 Screw Gripper, 6.0-8.5 x 41 mm

1x 6.0-8.5 x 41 mm

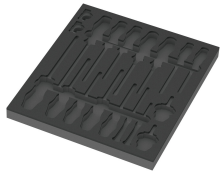


### 9810 Foam insert screwdriver set 1, empty, 344 x 30 x 392 mm

05137310001<sup>1)</sup>

1x 344 x 30 x 392 mm

1) Attention: The foam insert does not fit in the previous model 05501051001 of the roller cabinet.



#### Web link

[https://products.wera.de/en/screwdrivers\\_kraftform\\_plus\\_series\\_900\\_9710.html](https://products.wera.de/en/screwdrivers_kraftform_plus_series_900_9710.html)

Wera - 9710

05150101001 - 4013288225122

Wera Werkzeuge GmbH

Korzerter Straße 21-25

D-42349 Wuppertal

Tel: +49 (0)2 02 / 40 45-0

E-Mail: [info@wera.de](mailto:info@wera.de)