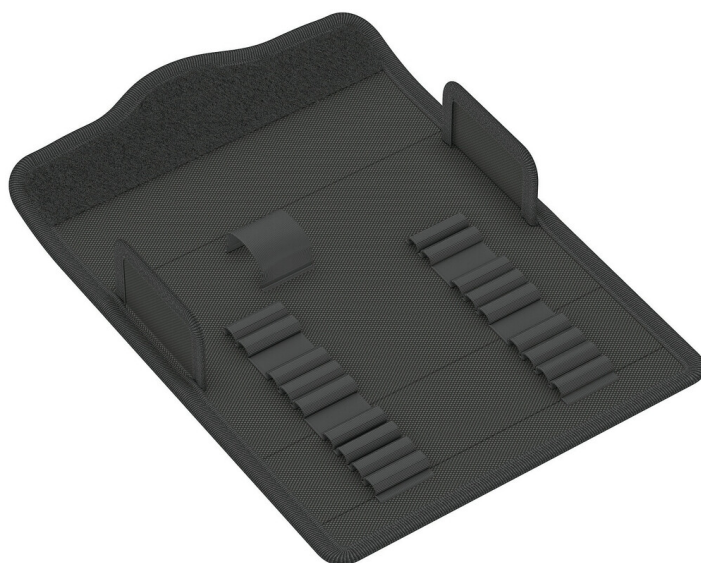


9467 Textile box Kraffform Kompakt 900, empty, 185 x 70 x 105 mm

Textile Pouches and Boxes for Kraffform Kompakt Sets, empty



EAN:	4013288222916	Size:	190x70x45 mm
Part number:	05136407001	Weight:	112 g
Article number:	9467	Country of origin:	CN
		Customs tariff number:	42029298

- Robust, rigid material
- Strong hook and loop fastener system prevents unintentional opening and loss of the tool
- Compact design for space-saving storage
- Low weight for easy transport
- Compatible with Wera 2go

Robust textile box for space-saving tool storage; ideal for mobile use, as the material used is light and firm; for tool sets Kraffform Kompakt 900 Set 1 and Kraffform Kompakt 900 Imperial Set 1; empty.

Web link

https://products.wera.de/en/kraffform_kompakt_textile_pouches_and_boxes_for_kraffform_kompakt_sets_empty_9467.html

Wera - 9467
05136407001 - 4013288222916

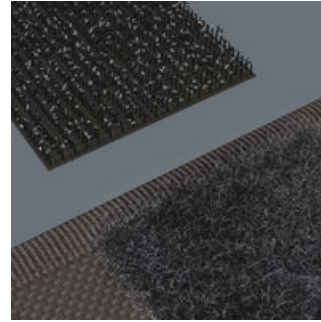
Wera Werkzeuge GmbH
Korzerter Straße 21-25
D-42349 Wuppertal
Tel: +49 (0)2 02 / 40 45-0
E-Mail: info@wera.de

Textile Pouches and Boxes for Kraftform Kompakt Sets, empty

Robust, lightweight, rigid

Robust loops for a secure hold

Flexible thanks to hook and loop fastener strips



The material used is distinguished by its high level of robustness. At the same time, the textile box is light and rigid. Even if the textile box falls down, the tools are well protected.

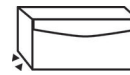
The robust loops made of broad rubber band hold the tool safe and tight.

The textile box features a fleece zone at the back. Using the provided self-adhesive hook and loop fastener strips, the textile box can be attached to the Wera 2go components. Or to the wall, shelf or workshop trolley.

Further versions in this product family:



mm



mm



mm

05136407001

185.0

70.0

105.0

Web link

https://products.wera.de/en/kraftform_kompakt_textile_pouches_and_boxes_for_kraftform_kompakt_sets_empty_9467.html

Wera - 9467

05136407001 - 4013288222916

Wera Werkzeuge GmbH

Korzter Straße 21-25

D-42349 Wuppertal

Tel: +49 (0)2 02 / 40 45-0

E-Mail: info@wera.de