



# Sauter GmbH

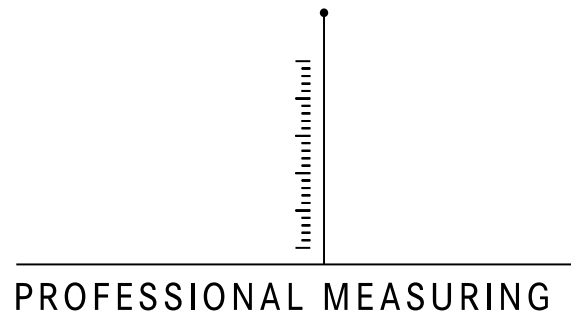
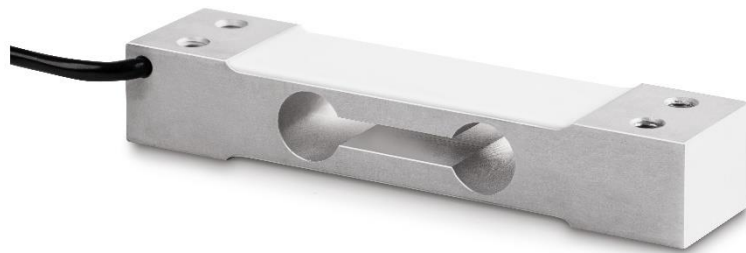
Ziegelei 1  
D-72336 Balingen  
E-Mail: [info@kern-sohn.com](mailto:info@kern-sohn.com)

Tel.: +49-[0]7433-9933-0  
Fax: +49-[0]7433-9933-149  
Internet: [www.sauter.eu](http://www.sauter.eu)

## Instruction Manual / Data sheet

### CP P1

V. 2.0  
10/2023  
GB



CP P1-BA-e-2320



# SAUTER CP P1

V. 1.0 10/2023

## Instruction Manual / Data sheet

---

---

Summarize:

1	Short description .....	3
2	Available models.....	3
3	Introduction.....	3
4	Warning notes.....	3
5	Warranty .....	4
6	Detailed specifications .....	4
7	Wiring.....	5
8	Dimensions in mm.....	5
9	Certificate of Compliance.....	5

## 1 Short description

- Aluminum-alloy IP65 (acc. to EN 60529) single point load cell.
- Colorless anodized
- Suitable for pricing scales, bench scales, etc.
- Maximum platform size: 250 x 350 mm
- Accuracy OIML R60 C3
- Option on request accuracy C4 / C5
- OIML certificated
- RoHS conform

## 2 Available models

Capacity	Model	Cable length in m
3kg	CP 3-3P1	0,4
3kg	CP 3-2-3P1	2
5kg	CP 5-3P1	0,4
6kg	CP 6-3P1	0,4
8kg	CP 8-3P1	0,4
10kg	CP 10-3P1	0,4
10kg	CP 10-3-3P1	3
15kg	CP 15-3P1	0,4
15kg	CP 15-3-3P1	3
20kg	CP 20-3P1	0,4
30kg	CP 30-3P1	0,4
35kg	CP 35-3P1	0,4
35kg	CP 35-3-3P1	3
40kg	CP 40-3P1	0,4
50kg	CP 50-3P1	0,4
50kg	CP 50-2-3P1	2

## 3 Introduction

Please pay attention to the notes of the operating manual: read these operating manual carefully before commissioning, even if you already have experience with SAUTER measuring cells.

After receiving the measuring cell, it should be checked in advance whether no transport damage has occurred, whether the outer packaging or other parts or even the article itself has been damaged. If any damage is evident, please inform SAUTER GmbH immediately.

## 4 Warning notes

Observe the national accident prevention regulations.

Not correct executed use of the measuring cell can lead to serious injuries, death, material damage and personal injuries. Use only by trained and experienced people.

Never load more than the max. capacity to a measuring cell. Overloaded measuring cells no longer have the required accuracy. Overloaded or deformed measuring cells are no longer allowed to use and must be changed quickly.

Never step under suspended loads.

Always fasten overload- or break security to your construction.

Pay attention to the allowed static and dynamic loads of the used equipment.

Let the measuring cells calibrate at regular intervals.

Only load the measuring cell in its specified load direction. Avoid lateral forces.

Control the measuring cells to deformations and cracks.

Measuring cells with 4-Conductor cable will change their characteristic value when shortened or extended the cable length.

## 5 Warranty

The warranty expires at:

- Disregard of the specifications of the operating manual
- Modification or opening the measuring cell
- Overload
- Mechanical damages
- Damage caused by liquids or media
- Natural loss
- Not correct installation

## 6 Detailed specifications

Output sensitivity ( = FS )	mV/V	2.0 ± 0.2	
Maximum capacity ( Emax )	kg	3, 5, 6, 8, 10, 15, 20, 30, 35, 40, 50	
Max.number of load cell intervals	nLC	3000	
Ratio of min. LC verification interval	Y = Emax / vmin	10000	
Combined Error	%FS	≤± 0.0230	
Minimum dead load	Of Emax	0%	
Safe overload	of Emax	150 %	
Ultimate overload	of Emax	300 %	
Zero balance	of FS	< ± 2.0 %	
Excitation, recommended voltage	V	5 ~ 12	
Excitation maximum	V	18	
Input resistance	Ω	409 ± 6	
Output resistance	Ω	350 ± 3	
Insulation resistance	MΩ	≥5000 ( at 50VDC )	
Compensated temperature	°C	-10...+40	
Operating temperature	°C	-35...+65	
Storage temperature	°C	-40...+70	
Recommended torque on fixation bolts	Nm	< 30kg: 6	>30kg: 10
		> 30kg: 10	

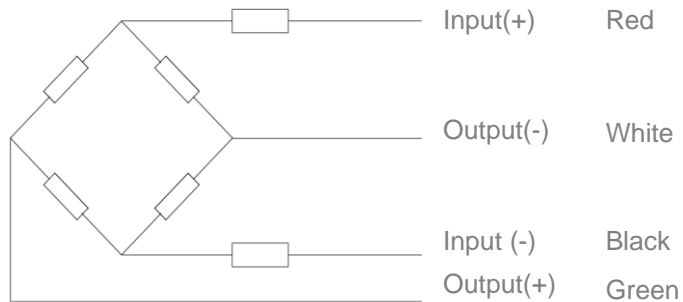
## 7 Wiring

Shielded, 4 conductor cable. Shield not connected to element.

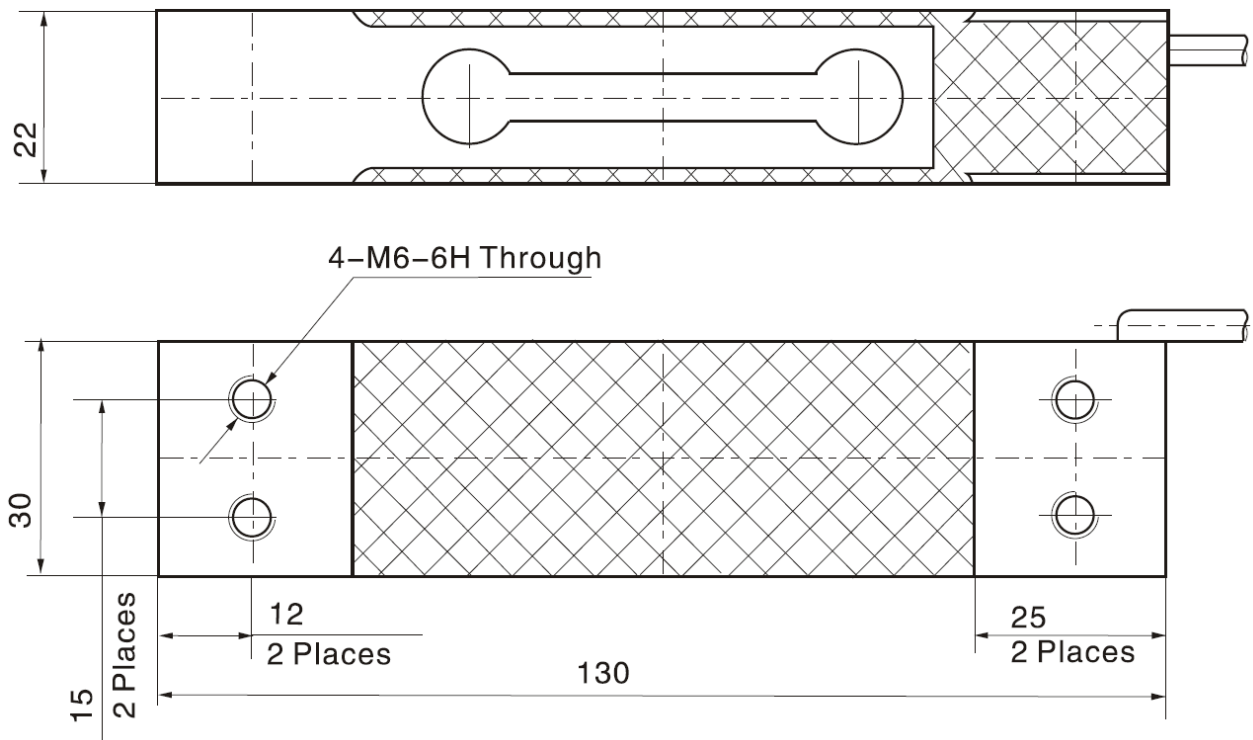
Cable diameter: Ø3.8mm. Standard cable length: look at available models chapter 2

Cable jacket in PVC.

4-wire diagram



## 8 Dimensions in mm



## 9 Certificate of Compliance

The Certificate of Compliance can be downloaded from the website [www.sauter.eu](http://www.sauter.eu)