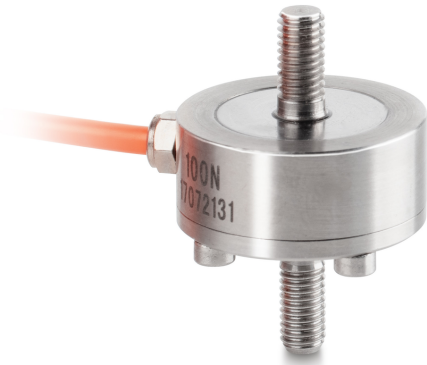


# KERN CO 20-Y2

Miniature cylindrical load cell made from stainless steel

# KERN



## Category

|                  |                           |
|------------------|---------------------------|
| Brand            | Sauter                    |
| Product category | Measuring cell            |
| Product group    | Load/force measuring cell |
| Product family   | CO Y2                     |

## Measuring System

|  |                        |
|--|------------------------|
| Weighing capacity [Max]                          | 20 kg                  |
| Load cell connection                             | 4-wire                 |
| Load cell OIML class                             | G5                     |
| Load cell - characteristic value - nominal       | 1,5 mV/V               |
| Load cell - Combined error                       | 0,5%                   |
| Measuring applications                           | force<br>mass          |
| Load cell - Input resistance - nominal           | 350 $\Omega$           |
| Load cell - Output resistance - nominal          | 350 $\Omega$           |
| Load cell - Isolation resistance - [Min]         | 5000 M $\Omega$        |
| Load cell - Recommended excitation voltage [Min] | 9 V                    |
| Load cell - Recommended excitation voltage [Max] | 12 V                   |
| Load cell - Input resistance - variance          | 20 $\Omega$            |
| Load cell - Output resistance - variance         | 3 $\Omega$             |
| Measuring range force [Max] (N)                  | 200 N                  |
| Directions of force                              | tension<br>compression |

## Approval

|         |   |
|---------|---|
| CE mark | ✓ |
|---------|---|

## Construction

|                               |                          |
|-------------------------------|--------------------------|
| Design                        | Tension-/compression rod |
| Material                      | stainless steel          |
| Cable length                  | 2 m                      |
| Dimension ( $\varnothing$ ×H) | 26×37,5 mm               |
| Mounting - force application  | External thread M5       |
| Mounting - force dissipation  | External thread M5       |

## Functions

|                                 |      |
|---------------------------------|------|
| IP protection - complete device | IP65 |
|---------------------------------|------|

## Environmental conditions

|                       |       |
|-----------------------|-------|
| Use temperature [Min] | 0 °C  |
| Use temperature [Max] | 40 °C |

## Packing & Shipping

|                              |                |
|------------------------------|----------------|
| Readability force [d] (N)    | 1 d            |
| Dimensions packaging (W×D×H) | 120×90×85 mm   |
| Net weight                   | 0,072 kg       |
| Shipping method              | Parcel service |
| Net weight approx.           | 0,10 kg        |
| Gross weight approx.         | 0,15 kg        |
| Shipping weight              | 0,2 kg         |

## Services (optional)

|   |          |
|---|----------|
| Article number for DAkkS calibration (tensile force)                    | 963-161V |
| Article number for DAkkS calibration (compressive force)                | 963-261V |
| Article number for DAkkS calibration (tensile force/ compressive force) | 963-361V |

# KERN CO 20-Y2

Miniature cylindrical load cell made from stainless steel



## Pictograms

### STANDARD

---



### OPTION

---

