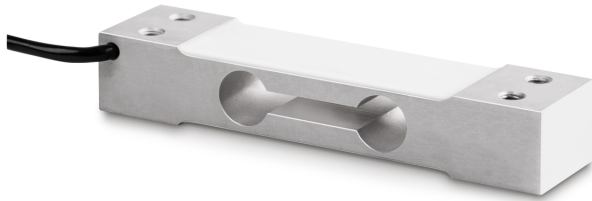


# KERN CP 15-3P1

Single-point load cell made of anodised aluminium



Load cell - Recommended excitation voltage [Max] 12 V

Load cell - Input resistance - variance 6  $\Omega$

Load cell - Output resistance - variance 3  $\Omega$

Directions of force compression

## Approval

CE mark ✓

Pattern approval for conformity assessment ✓

## Construction

Design Singlepoint load cell

Dimension (W×D×H) 130×30×22 mm

Material aluminium

Cable length 0,4 m

Mounting - force application 2 × threaded hole M6

Mounting - force dissipation 2 × threaded hole M6

## Functions

IP protection - complete device IP65

## Environmental conditions

Use temperature [Min] -10 °C

Use temperature [Max] 40 °C

Ambient temperature [Min] -35 °C

Ambient temperature [Max] 65 °C

Storage temperature [Min] -40 °C

Storage temperature [Max] 70 °C

## Packing & Shipping

Readability force [d] (N) 1 d

Dimensions packaging (W×D×H) 160×95×45 mm

Net weight 0,177 kg

Shipping method Parcel service

Net weight approx. 0,20 kg

Gross weight approx. 0,25 kg

Shipping weight 0,217 kg

## Services (optional)

Article number for DAkkS calibration (compressive force) 963-261V

## Category

Brand	Sauter
Product category	Measuring cell
Product group	Load cell
Product family	CP P1

## Measuring System

Weighing capacity [Max]	15 kg
Load cell connection	4-wire
Load cell OIML class	C3
Load cell - Resolution (verifiable)	3000 e
Temperature coefficient - zero signal	$\leq \pm 0.02\%FS/10\text{ }^{\circ}C$
Creep error (30 minutes)	$\leq \pm 0.0167\%FS$
Safe overload	150%FS
Ultimate overload	300%FS
Zero balance	$\leq \pm 2.0\%FS$
Maximum platform size	250×350 mm
Temperature coefficient - characteristic value	$\leq \pm 0.0175\%FS/10\text{ }^{\circ}C$
Load cell - characteristic value - nominal	2 mV/V
Load cell - characteristic value - variance	0,2 mV/V
Load cell - Y-value	10000
Load cell - Combined error	0,023%
Load cell - Dead load [Min] (%)	0%
Measuring applications	mass
Load cell - Input resistance - nominal	409 $\Omega$
Load cell - Output resistance - nominal	350 $\Omega$
Load cell - Isolation resistance - [Min]	5000 M $\Omega$
Load cell - Recommended excitation voltage [Min]	5 V

# KERN CP 15-3P1

Single-point load cell made of anodised aluminium



## Pictograms

### STANDARD

---



### OPTION

---

