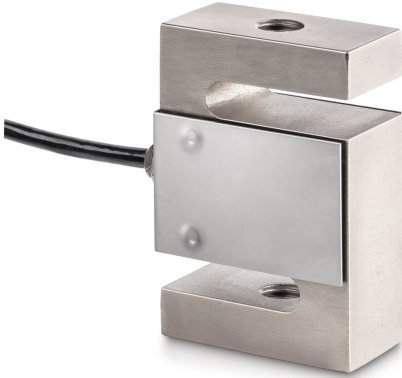


# KERN CS 100-3P1

# KERN

4-wire "S" measuring cell made of nickel-plated steel for force and mass measurement



## Approval

CE mark ✓

## Construction

Design	"S" shaped cell
Dimension (W×D×H)	50,8×76,2×20,8 mm
Material	steel, nickel-plated
Cable length	3 m
Mounting - force application	Threaded hole M10
Mounting - force dissipation	Threaded hole M10

## Functions

IP protection - complete device IP67

## Environmental conditions

Use temperature [Min]	-10 °C
Use temperature [Max]	40 °C
Ambient temperature [Min]	-35 °C
Ambient temperature [Max]	65 °C
Storage temperature [Min]	-40 °C
Storage temperature [Max]	70 °C

## Packing & Shipping

Readability force [d] (N)	1 d
Dimensions packaging (W×D×H)	185×155×60 mm
Net weight	0,58 kg
Shipping method	Parcel service
Net weight approx.	0,60 kg
Gross weight approx.	0,70 kg
Shipping weight	0,685 kg

## Services (optional)

Article number for DAkkS calibration (tensile force)	963-162V
Article number for DAkkS calibration (compressive force)	963-262V
Article number for DAkkS calibration (tensile force/ compressive force)	963-362V

## Category

Brand	Sauter
Product category	Measuring cell
Product group	Load/force measuring cell
Product family	CS P1

## Measuring System

Weighing capacity [Max]	100 kg
Load cell connection	4-wire
Load cell OIML class	C3
Load cell - Resolution (verifiable)	3000 e
Load cell - characteristic value - nominal	2 mV/V
Load cell - Y-value	10000
Load cell - Combined error	0,02%
Load cell - Dead load [Min] (%)	0%
Measuring applications	force mass
Load cell - Input resistance - nominal	350 Ω
Load cell - Output resistance - nominal	351 Ω
Load cell - Isolation resistance - [Min]	500 MΩ
Load cell - Recommended excitation voltage [Min]	5 V
Load cell - Recommended excitation voltage [Max]	12 V
Measuring range force [Max] (N)	1 kN
Directions of force	tension compression

# KERN CS 100-3P1

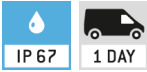


4-wire "S" measuring cell made of nickel-plated steel for force and mass measurement

## Pictograms

### STANDARD

---



### OPTION

---

