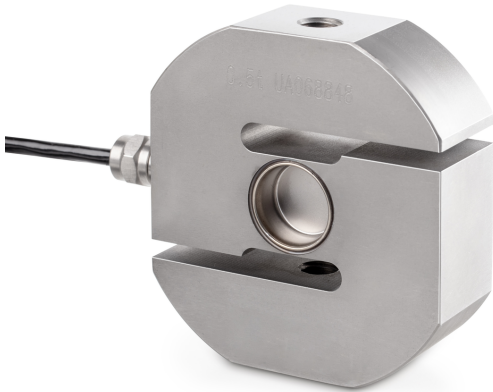


KERN CS 2000-3P2

KERN

"S"-Load/force measuring cell made from stainless steel



Construction

Design	"S" shaped cell
Dimension (W×D×H)	92×86×50 mm
Material	stainless steel
Cable length	6 m
Mounting - force application	Threaded hole M20 × 1,5
Mounting - force dissipation	Threaded hole M20 × 1,5

Functions

IP protection - complete device	IP68
---------------------------------	------

Environmental conditions

Use temperature [Min]	-10 °C
Use temperature [Max]	40 °C
Ambient temperature [Min]	-35 °C
Ambient temperature [Max]	65 °C
Storage temperature [Min]	-40 °C
Storage temperature [Max]	70 °C

Packing & Shipping

Readability force [d] (N)	1 d
Dimensions packaging (W×D×H)	205×170×60 mm
Net weight	1,597 kg
Shipping method	Parcel service
Net weight approx.	1,6 kg
Gross weight approx.	1,8 kg
Shipping weight	1,703 kg

Services (optional)

Article number for factory calibration (tensile force)	961-164V
Article number for factory calibration (tensile force/ compressive force)	961-364V

Pictograms

STANDARD



OPTION



Category

Brand	Sauter
Product category	Measuring cell
Product group	Load/force measuring cell
Product family	CS P2

Measuring System

Weighing capacity [Max]	2000 kg
Load cell connection	4-wire
Load cell OIML class	C3
Load cell - Resolution (verifiable)	3000 e
Load cell - characteristic value - nominal	2 mV/V
Load cell - Y-value	12000
Load cell - Combined error	0,023%
Load cell - Dead load [Min] (%)	0%

Measuring applications
force
mass

Load cell - Input resistance - nominal	350 Ω
Load cell - Output resistance - nominal	355 Ω
Load cell - Isolation resistance - [Min]	5000 MΩ
Measuring range force [Max] (N)	20 kN

Directions of force
tension
compression

Approval

CE mark ✓