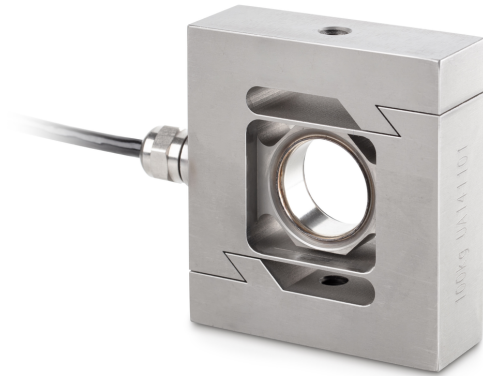


# KERN CS 250-3P2

# KERN

"S"-Load/force measuring cell made from stainless steel



## Construction

Design	"S" shaped cell
Dimension (W×D×H)	92×86×50 mm
Material	stainless steel
Cable length	6 m
Mounting - force application	Threaded hole M12
Mounting - force dissipation	Threaded hole M12

## Functions

IP protection - complete device	IP68
---------------------------------	------

## Environmental conditions

Use temperature [Min]	-10 °C
Use temperature [Max]	40 °C
Ambient temperature [Min]	-35 °C
Ambient temperature [Max]	65 °C
Storage temperature [Min]	-40 °C
Storage temperature [Max]	70 °C

## Packing & Shipping

Readability force [d] (N)	1 d
Dimensions packaging (W×D×H)	200×180×55 mm
Net weight	0,96 kg
Shipping method	Parcel service
Net weight approx.	1,00 kg
Gross weight approx.	1,2 kg
Shipping weight	1,072 kg

## Services (optional)

Article number for DAkkS calibration (tensile force)	963-163V
Article number for DAkkS calibration (compressive force)	963-263V
Article number for DAkkS calibration (tensile force/ compressive force)	963-363V

## Category

Brand	Sauter
Product category	Measuring cell
Product group	Load/force measuring cell
Product family	CS P2

## Measuring System

Weighing capacity [Max]	250 kg
Load cell connection	4-wire
Load cell OIML class	C3
Load cell - Resolution (verifiable)	3000 e
Load cell - characteristic value - nominal	2 mV/V
Load cell - Y-value	12000
Load cell - Combined error	0,023%
Load cell - Dead load [Min] (%)	0%
Measuring applications	force mass
Load cell - Input resistance - nominal	350 Ω
Load cell - Output resistance - nominal	355 Ω
Load cell - Isolation resistance - [Min]	5000 MΩ
Measuring range force [Max] (N)	2,5 kN
Directions of force	tension compression

## Approval

CE mark	✓
---------	---

# KERN CS 250-3P2

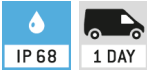


"S"-Load/force measuring cell made from stainless steel

## Pictograms

### STANDARD

---



### OPTION

---

