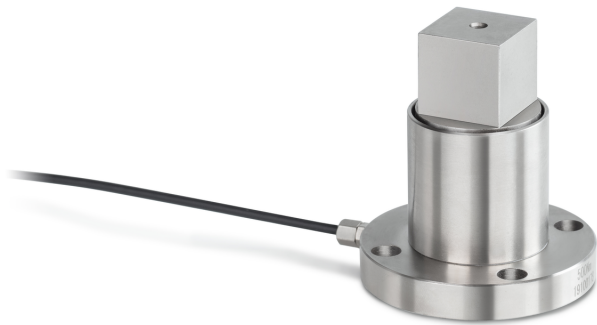


KERN DC 100-Y1

Static torque sensor made from alloy steel

KERN



Mounting - force dissipation 4 × through hole Ø 6,5 mm

Environmental conditions

Use temperature [Min]	-20 °C
Use temperature [Max]	65 °C

Packing & Shipping

Readability force [d] (N)	1 d
Dimensions packaging (W×D×H)	120×90×85 mm
Net weight	0,38 kg
Shipping method	Parcel service
Net weight approx.	0,40 kg
Gross weight approx.	0,45 kg
Shipping weight	0,421 kg

Pictograms

STANDARD



Category

Brand	Sauter
Product category	Measuring cell
Product group	Torque sensor
Product family	DC Y1

Measuring System

Load cell connection	4-wire
Load cell - characteristic value - nominal	1,9 mV/V
Load cell - characteristic value - variance	0,2 mV/V
Load cell - Combined error	0,5%
Measuring applications	static torque
Load cell - Input resistance - nominal	380 Ω
Load cell - Output resistance - nominal	350 Ω
Load cell - Isolation resistance - [Min]	5000 MΩ
Load cell - Recommended excitation voltage [Min]	9 V
Load cell - Recommended excitation voltage [Max]	12 V
Load cell - Input resistance - variance	10 Ω
Load cell - Output resistance - variance	3 Ω
Measuring range torque [Max]	100 Nm

Approval

CE mark	✓
---------	---

Construction

Material	steel
Cable length	2 m
Mounting - force application	12,5 mm outer square