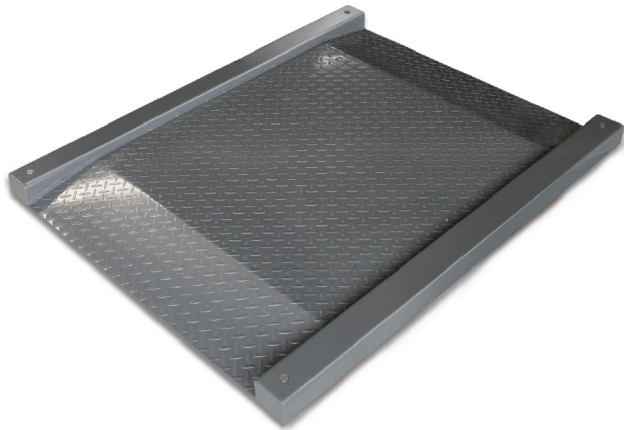


KERN KFD 600V20LM

KERN

Weighing bridge made of non-slip corrugated steel plate, lacquered



IP protection - platform	IP67
--------------------------	------

Packing & Shipping

Readability force [d] (N)	2 d
Dimensions packaging (W×D×H)	1400×1800×330 mm
Net weight	154 kg
Shipping method	Freight
Net weight approx.	155 kg
Gross weight approx.	195 kg
Shipping weight	192 kg

Services (optional)

Article number for conformity assessment	965-230
Article number for DAkkS calibration	963-130

Pictograms

STANDARD



FACTORY



Category

Brand	KERN
Product category	Component
Product group	Weighing bridge
Product family	KFD-V20

Measuring System

Weighing capacity [Max]	600 kg
Readability [d]	200 g
Minimum weight [Min]	4 kg

Approval

Verification scale interval [e]	200 g
Conformity assessment possible ex works	✓

Construction

Dimensions weighing platform (W×D×H)	1800×1400×80 mm
Material weighing plate	steel, lacquered
Material platform	steel, varnished
Dimensions weighing surface (W×D)	1800×1200 mm
Cable length	5 m
Display device cable length	5 m
Allowed cable length display device [Max]	30 m
Material load cell(s)	alloyed steel
Load cells - number	4

Functions

IP protection - complete device	IP67 (load cell)
IP protection - load cell	IP67