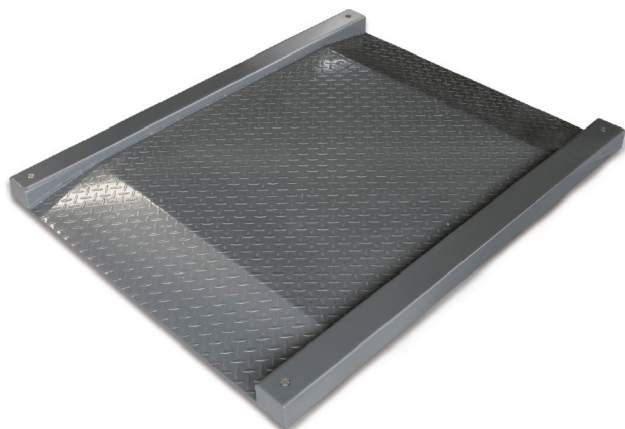


KERN KFD 600V20M

KERN

Weighing bridge made of non-slip corrugated steel plate, lacquered



Construction

Dimensions weighing platform (W×D×H)	1600×1200×78 mm
Material display housing	Plastics
Material weighing plate	steel, lacquered
Dimensions weighing surface (W×D)	1000×1000 mm
Cable length	5 m
Display device cable length	5 m
Allowed cable length display device [Max]	30 m
Material load cell(s)	alloyed steel
Load cells - number	4
Levelling feet adjustable	✓
Wall mount	✓
Stand inclinable	✓

Functions

Auto-off interval(s) in mains power mode	selectable
Auto-off interval(s) in battery mode/rechargeable battery mode	selectable
Tare function	manual (multi)
Function for averaging under unstable weighing conditions	✓
Sum memory function	✓
Underfloor weighing	None
IP protection - complete device	IP67 (load cell)
IP protection - load cell	IP67
IP protection - platform	IP67

Power Supply

Input voltage power supply / power [Max]	110 V - 230 V AC
Input voltage device / power [Max]	12 V, 500 mA
Plug-in power supply type	Power adapter
Supplied power supply	Power supply unit
Plug-in power supply / adapter for countries - included with the delivery	EURO
Rechargeable battery optional	Rchrg. battery optional (factory)
Rechargeable battery charging time	10 h
Rechargeable battery operating time - backlight on	8 h
Rechargeable battery operating time - backlight off	35 h

Category

Brand	KERN
Product category	Component
Product group	Weighing bridge
Product family	KFD-V20

Measuring System

Construction type of the scale	Single-range balance
Weighing system	Strain gauge
Weighing capacity [Max]	600 kg
Readability [d]	0,2 kg
Linearity	± 0,4 kg
Reproducibility	0,2 kg
Tare range	-600 kg
Minimum weight [Min]	4 kg
Adjustment options	Adjusting with external weight
Recommended adjusting weight	600 kg (M2)
Stabilization time	2 s
Eccentric loading at 1/3 [Max]	0,4 kg

Approval

CE mark	✓
Pattern approval for conformity assessment	✓
Accuracy classe	III
Verification scale interval [e]	0,2 kg
Conformity assessment possible ex works	✓

Display

Display type	LCD with backlight
Display digit height	52 mm

KERN KFD 600V20M



Weighing bridge made of non-slip corrugated steel plate, lacquered

Environmental conditions

Humidity of environment [Min]	0 %
Humidity of environment [Max]	80 %
Ambient temperature [Min]	-10 °C
Ambient temperature [Max]	40 °C

Packing & Shipping

Readability force [d] (N)	2 d
Dimensions packaging (W×D×H)	1610×1250×360 mm
Net weight	125 kg
Shipping method	Freight
Net weight approx.	125 kg
Gross weight approx.	155 kg
Shipping weight	155 kg

Services (optional)

Article number for adjustment at the location of installation	961-250
Article number for conformity assessment	965-230
Article number for DAkkS calibration	963-130

Pictograms

STANDARD



FACTORY

