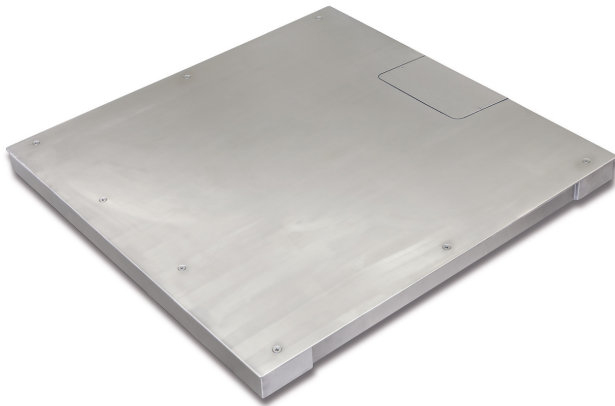


KERN KFP 1500V40SM

Weighing bridge



Category

| | |
|------------------|---------------------------------|
| Brand | KERN |
| Product category | Measuring Technology Components |
| Product group | Weighing bridges |

Measuring System

| | |
|-------------------------|-----------------------------------|
| Readability [d] | 500 g |
| Weighing capacity [Max] | 1500 kg |
| Minimum weight [Min] | 10 kg |
| Loadcell type | stainless steel IP68 encapsulated |
| Load cell connection | 6-guide |

Approval

| | |
|---|-------|
| Conformity assessment possible ex works | ✓ |
| Verification scale interval [e] | 500 g |

Construction

| | |
|---|-----------------|
| Dimensions weighing platform (W×D×H) | 1000×1000×80 mm |
| Dimensions weighing surface (W×D) | 1000×1000 mm |
| Material weighing plate | stainless steel |
| Material platform | Stainless steel |
| Material load cell(s) | aluminium |
| Cable length | 5 m |
| Allowed cable length display device [Max] | 20 m |
| Levelling feet adjustable | ✓ |
| Load cells - number | 4 |

Functions

| | |
|---------------------------|---------------------|
| IP protection - load cell | IP67 |
| IP protection - platform | IP67 (junction box) |

Packing & Shipping

| | |
|------------------------------|------------------|
| Readability force [d] (N) | 2 d |
| Shipping method | Freight |
| Dimensions packaging (W×D×H) | 1050×1050×260 mm |
| Net weight approx. | 95 kg |
| Gross weight approx. | 105 kg |
| Shipping weight | 105 kg |

Services (optional)

| | |
|--|---------|
| Article number for conformity assessment | 965-230 |
| Article number for DAkkS calibration | 963-130 |

Piktogramme

STANDARD

