



KERN & Sohn GmbH

Ziegelei 1

D-72336 Balingen

E-Mail: info@kern-sohn.com

Tel: +49-[0]7433- 9933-0

Fax: +49-[0]7433-9933-149

Internet: www.kern-sohn.com

Operating instructions

Height measuring rod

KERN MBC-A01

Version 1.4

2019-10

GB



MBC-A01-BA-e-1914



KERN MBC-A01

Version 1.4 2019-10

Operating instructions for body height meter

Contents

1	Technical data	3
2	Declaration of conformity	3
3	Scope of delivery	4
4	Explanation of the graphic symbols	5
5	Basic Information (General)	6
6	Basic Safety Precautions	7
7	Unpacking/installing	8
8	Assembly	9
9	Body height measurement	10
10	Cleaning, Maintenance, Disposal	11

English

1 Technical data

KERN	MBC-A01
Measuring range	10 – 80 cm
Readability	1 mm
Tolerance	5 mm
Dimensions (W x H x D)	88.5 x 17 x 12
Temperature range	+10°C ... +40°C
Net weight	approx. 800 g
Admitted as medical product as per Guideline 93/42/EWG (CE 0297)	Category I with measuring function



The height meter is only suitable for use with baby weighing scale KERN MBC-M.

2 Declaration of conformity

To view the current EC/EU Declaration of Conformity go to:

www.kern-sohn.com/ce

3 Scope of delivery



- 1 Measuring rod
- 2 Head stop
- 3 Foot stop
- 4 Screws (4 x)

4 Explanation of the graphic symbols

SN WF 12xxx

Designation of the serial number of every device, applied at the device and on the packaging.

Number here as example



Identification of the manufacturing date of the medical product.

Year and month here as example



„Attention observe accompanying document“, or „Follow operating instructions“



„Follow operating instructions“



„Follow operating instructions“



**Kern & Sohn GmbH
D – 72336 Balingen
Ziegelei 1**

Manufacturer's marking of medical product including address

10°C / 40°C

Temperature limitation in the application indicating the lower and the upper limit (Allowable ambient temperature)

Temperature indication as example

5 Basic Information (General)



This height measuring rod according to guideline 93/42/EWG is provided for determination the body height in medical practice and for medical survey, examination and treatment.

Defined purpose

Indication:

- Determining the body height in the medical practice area.
- For a baby resting on his/her back, attach the measuring rod in such a way on head and feet that you can read the body height on the scale.

Contraindication:

No contraindication known.

Proper use This height measuring rod is designed for measuring the height of a baby resting on his/her back, in medical treatment rooms. This height measuring rod is suitable to detect, prevent and survey diseases.

Ensure that the height measuring rod may only come into contact only with uninjured skin.

Improper Use The structure of the height measuring rod may not be modified. This may result in incorrect measuring results, safety-related defects as well as destruction.

The height measuring rod may only be used according to the described conditions. Other areas of use must be released by KERN in writing.

Warranty Warranty claims shall be voided in case

- Our conditions in the operation manual are ignored
- The appliance is used outside the described uses
- The appliance is modified or opened
- Mechanical damage or damage by media, liquids, natural wear and tear.
- Non correct implantation or assembly.

Test device control For height measuring rods, we recommend a metrological examination of the accuracy of the measuring rod, however, this is not mandatory as the determination of human body height involves rather large, intrinsic inaccuracies.

6 Basic Safety Precautions



⇒ Carefully read this operation manual before setup and commissioning, even if you are already familiar with KERN balances.



Staff training The medical staff must apply and follow the operating instructions for proper use and care of the product.

Avoiding contamination In order to avoid crossed contamination (fungal disease,...) the parts coming into contact with the patient must be cleared regularly.

Recommendation:

After every application which could have a potential contamination as consequence (e.g. direct contact with the skin).

Safety Instructions

- Observe operating instructions.
- Please use no other than the supplied fixtures for mounting.
- Ensure during installation that the height measuring rod has been assembled correctly.
- When shifting the measuring rod, ensure that the baby does not come to any harm.
- Reliable values of body height measurements are only achieved if the heel, back and head are aligned in a straight line.
- Do not attach the height measuring rod to any other but the baby weighing scale KERN MBC-M.
- During installation make sure that the screws are fitted firmly.
- Do not leave a baby unattended.
- When shifting the measuring rod make sure that neither the hands nor the feet of the baby are resting on the measuring rod.
- Clean and disinfect the measuring rod at regular intervals.
- To achieve correct height measuring, we recommend that you involve a second person.

7 Unpacking/installing

Testing upon acceptance

Please check packaging as well as the device on receipt for possibly visible external damages.

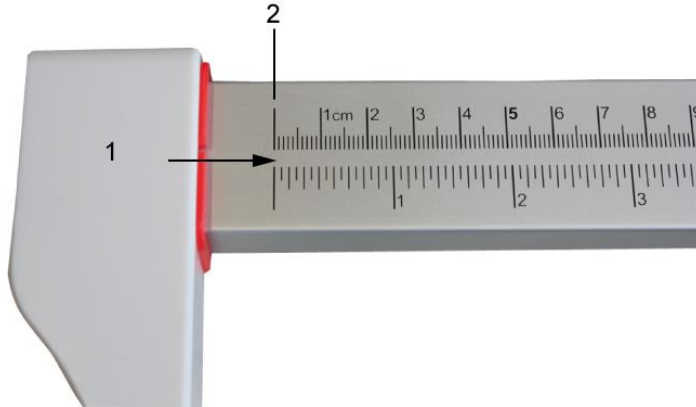
Packaging/Return

Keep all parts of the original packaging for a possibly required return.
Only use original packaging for returning.

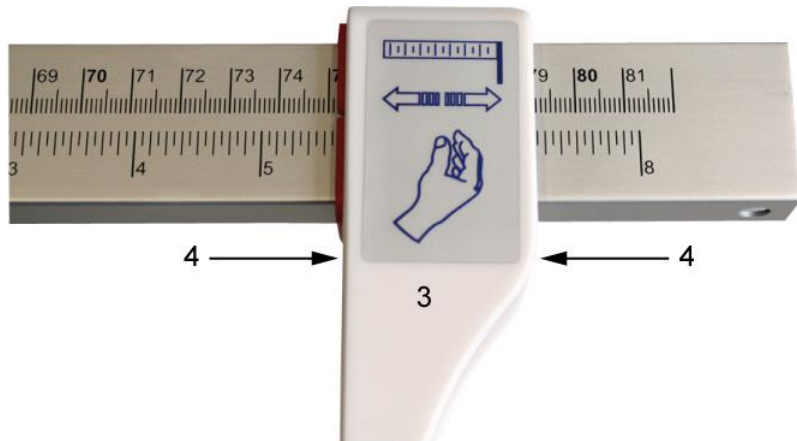
8 Assembly

How to assemble the height meter:

Attach the head stop (1) to the left side of the measuring rod and shift it to the zero mark (2) of the scale.



Attach the foot stop (3) to the right side of the measuring rod and shift it to the left as far as you wish.



Hold the foot stop in the area of the measuring rod when shifting it (4)

How to attach the height meter to the weighing scale:

Attach the height meter to the bottom end of the weighing scale with the help of the supplied screws.



When screwing down the height meter make sure that you do not apply too much pressure on the weighing pan as that may damage the weighing cell.

9 Body height measurement

Ensure that the head stop (3) is placed exactly on the zero mark (2) of the measuring meter.



- ⇒ Put the baby in the centre of the weighing pan.
- ⇒ Move the height measuring rod (2) carefully to the right until the head stop (3) gently touches the baby's head
- ⇒ To achieve correct measurement we recommend that you involve a second person.
- ⇒ Do not leave a baby unattended.
- ⇒ When shifting the measuring rod, make sure that no harm is done to the baby and that its hands and feet do not rest on the measuring rod.
- ⇒ Press the baby's knees gently onto the weighing pan.
- ⇒ Move the foot stop (4) carefully towards the bottom of the baby's feet and keep the baby immobile.
- ⇒ On the scale read the baby's size.



A correctly exercised height measurement will achieve an accuracy of ± 5 mm.

10 Cleaning, Maintenance, Disposal

**Cleaning
Disinfection**

Clean the height measuring rod with household detergent or commercially available disinfectant, e.g. 70% isopropanol. We recommend a disinfectant suitable for wiping disinfection. Please follow manufacturer's instructions.

Do not use abrasive or aggressive cleaners such as spirits or alcohol or similar as they might damage the high-quality surface.

Sterilisation

Sterilisation of the appliance not allowed.

Disposal

Disposal of packaging and height meter must be carried out by operator according to valid national or regional law of the location where the appliance is used.



Do not spray the height measuring rod with disinfectant.
Remove dirt immediately