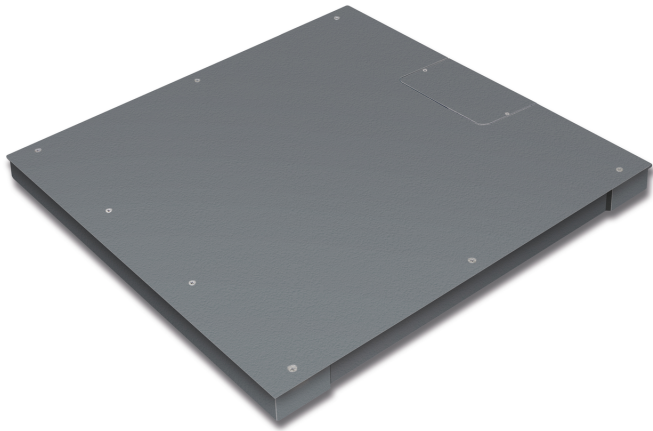


# KERN KFP 6000V20M

Platform

# KERN



## Packing & Shipping

Readability force [d] (N)	2 d
Shipping method	Freight
Dimensions packaging (W×D×H)	1550×1300×350 mm
Net weight approx.	210 kg
Gross weight approx.	275 kg

## Services (optional)

Article number for conformity assessment	965-232
Article number for DAkkS calibration	963-132

## Piktogramme

### STANDARD



## Category

Brand	KERN
Product category	Measuring Technology Components
Product group	Weighing bridges

## Measuring System

Readability [d]	2000 g
Weighing capacity [Max]	6000 kg
Minimum weight [Min]	40 kg
Load cell connection	6-guide

## Approval

Conformity assessment possible ex works	✓
Verification scale interval [e]	2 kg

## Construction

Dimensions weighing platform (W×D×H)	1500×1500×121 mm
Dimensions weighing surface (W×D)	1500×1500 mm
Material weighing plate	stainless steel
Material platform	steel, varnished
Material load cell(s)	aluminium
Cable length	5 m
Allowed cable length display device [Max]	20 m
Levelling feet adjustable	✓
Load cells - number	4

## Functions

IP protection - load cell	IP67
IP protection - platform	IP67 (junction box)