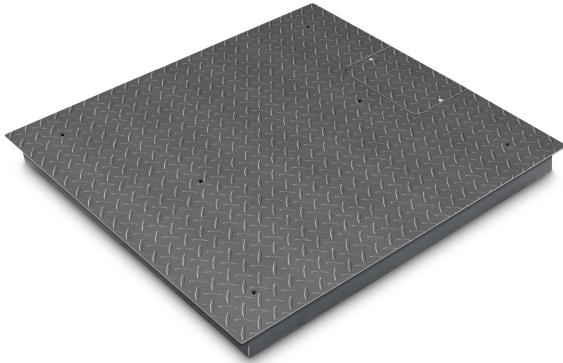


# KERN KIP 1500V20M



Weighing bridge made of non-slip corrugated steel plate, lacquered



## Category

Brand	KERN
Product category	Component
Product group	Weighing bridge
Product family	KIP-V20M

## Measuring System

Conformity assessment possible	✓
Weighing system	Strain gauge
Weighing capacity [Max]	1500 kg
Readability [d]	0,5 kg
Resolution	3.000
Linearity	± 1,5 kg
Reproducibility	0,5 kg
Tare range	-1500 kg
Minimum weight [Min]	10 kg
Adjustment options	Adjusting with external weight
Recommended adjusting weight	1500 kg (M1)
Stabilization time	2 s
Warm-up time	10 min
Eccentric loading at 1/3 [Max]	2,5 kg
Maximum creep (15 minutes)	2 kg
Maximum creep (30 minutes)	4 kg
Loadcell type	nickel plated steel IP67 silicone-coated + glued on plate
Load cell connection	4-wire

## Approval

CE mark	✓
Verification scale interval [e]	0,5 kg
Conformity assessment possible ex works	✓

## Display

Display type	LCD
Display type	LCD
Display backlight	✓
Display digit height	25 mm
Languages of the user interface	Symbol language

## Construction

Dimension (W×D×H)	1200×1500×108 mm
Dimensions weighing platform (W×D×H)	1200×1500×108 mm
Material	steel, lacquered
Material display housing	Plastics
Material weighing plate	steel, powder-coated
Material platform	steel, powder-coated
Dimensions weighing surface (W×D)	1200×1500 mm
Cable length	5 m
Display device cable length	5 m
Allowed cable length display device [Max]	15 m
Material load cell(s)	steel
Load cells - number	4
Levelling feet adjustable	✓
Wall mount	✓

## Functions

Number of keys for operation	4
Auto-off interval(s) in mains power mode	selectable
Tare function	manual (single & multi)
Underfloor weighing	None
IP protection - load cell	IP67
IP protection - platform	no IP protection

## Power Supply

Plug-in power supply type	Power adapter
Supplied power supply	Power supply & battery function (battery not included)

## Environmental conditions

Humidity of environment [Min]	0 %
Humidity of environment [Max]	80 %
Ambient temperature [Min]	-10 °C
Ambient temperature [Max]	40 °C

# KERN KIP 1500V20M



Weighing bridge made of non-slip corrugated steel plate, lacquered

## Packing & Shipping

Readability force [d] (N)	2 d
Dimensions packaging (W×D×H)	1250×1550×270 mm
Net weight	148 kg
Shipping method	Freight
Net weight approx.	150 kg
Gross weight approx.	165 kg
Shipping weight	165 kg

## Services (optional)

Article number for adjustment at the location of installation	961-250
Article number for conformity assessment	965-230
Article number for DAkkS calibration	963-130
Article number for certificate of conformity (verification)	969-517

## Pictograms

### STANDARD



### FACTORY

