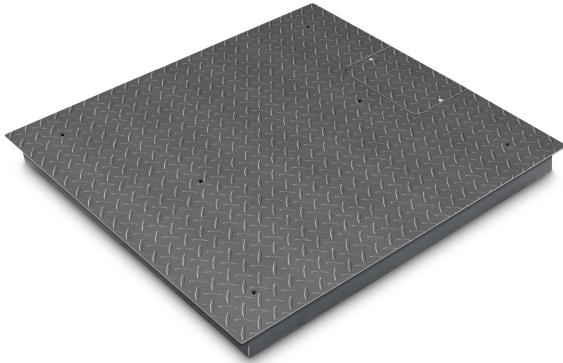


KERN KIP 3000V20M



Weighing bridge made of non-slip corrugated steel plate, lacquered



Category

Brand	KERN
Product category	Component
Product group	Weighing bridge
Product family	KIP-V20M

Measuring System

Conformity assessment possible	✓
Weighing system	Strain gauge
Weighing capacity [Max]	3000 kg
Readability [d]	1 kg
Resolution	3.000
Linearity	± 3 kg
Reproducibility	1 kg
Tare range	-3000 kg
Minimum weight [Min]	20 kg
Adjustment options	Adjusting with external weight
Recommended adjusting weight	3000 kg (M2)
Stabilization time	2 s
Warm-up time	10 min
Eccentric loading at 1/3 [Max]	5 kg
Maximum creep (15 minutes)	4 kg
Maximum creep (30 minutes)	8 kg
Loadcell type	nickel plated steel IP67 silicone-coated + glued on plate
Load cell connection	4-wire

Approval

CE mark	✓
Verification scale interval [e]	1 kg
Conformity assessment possible ex works	✓

Display

Display type	LCD
Display type	LCD
Display backlight	✓
Display digit height	25 mm
Languages of the user interface	Symbol language

Construction

Dimension (W×D×H)	1200×1500×108 mm
Dimensions weighing platform (W×D×H)	1200×1500×108 mm
Material	steel, lacquered
Material display housing	Plastics
Material weighing plate	steel, powder-coated
Material platform	steel, powder-coated
Dimensions weighing surface (W×D)	1200×1500 mm
Cable length	5 m
Display device cable length	5 m
Allowed cable length display device [Max]	15 m
Material load cell(s)	steel
Load cells - number	4
Levelling feet adjustable	✓
Wall mount	✓

Functions

Number of keys for operation	4
Auto-off interval(s) in mains power mode	selectable
Tare function	manual (single & multi)
Underfloor weighing	None
IP protection - load cell	IP67
IP protection - platform	no IP protection

Power Supply

Plug-in power supply type	Power adapter
Supplied power supply	Power supply & battery function (battery not included)

Environmental conditions

Humidity of environment [Min]	0 %
Humidity of environment [Max]	80 %
Ambient temperature [Min]	-10 °C
Ambient temperature [Max]	40 °C

KERN KIP 3000V20M



Weighing bridge made of non-slip corrugated steel plate, lacquered

Packing & Shipping

Readability force [d] (N)	2 d
Dimensions packaging (W×D×H)	1250×1550×270 mm
Net weight	148 kg
Shipping method	Freight
Net weight approx.	150 kg
Gross weight approx.	180 kg
Shipping weight	178 kg

Services (optional)

Article number for adjustment at the location of installation	961-252
Article number for conformity assessment	965-232
Article number for DAkkS calibration	963-132
Article number for certificate of conformity (verification)	969-517

Pictograms

STANDARD



FACTORY

