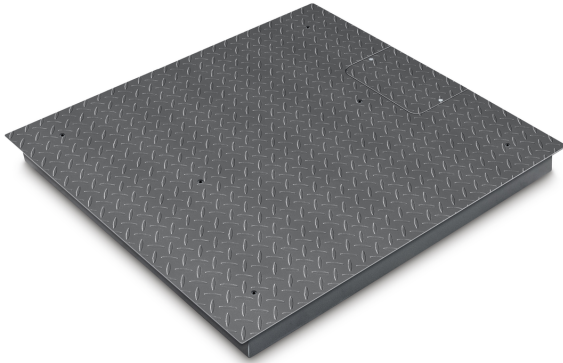


KERN KIP 600V20M

Weighing bridge

KERN



Category	
Brand	KERN
Product category	Measuring Technology Components
Product group	Weighing bridges
Measuring System	
Readability [d]	200 g
Weighing capacity [Max]	600 kg
Eccentric loading at 1/3 [Max]	1 kg
Minimum weight [Min]	4 kg
Reproducibility	0,2 kg
Linearity	± 0,6 kg
Weighing system	Strain gauge
Resolution	3.000
Tare range	-600 kg
Stabilization time	2 s
Warm-up time	10 min
Adjustment options	Adjusting with external weight
Recommended adjusting weight	600 kg (M2)
Loadcell type	nickel plated steel IP67 silicone-coated + glued on plate
Load cell connection	6-guide
Approval	
CE mark	✓
Conformity assessment possible ex works	✓
Verification scale interval [e]	0,2 kg
Display	
Display type	LCD

Display digit height	25 mm
Display backlight	✓
Languages of the user interface	Symbol language

Construction

Dimensions weighing platform (W×D×H)	1200×1500×108 mm
Dimension (W×D×H)	1200×1500×108 mm
Dimensions weighing surface (W×D)	1200×1500 mm
Material	steel, lacquered
Material display housing	Plastics
Material weighing plate	steel, powder-coated
Material platform	steel, powder-coated
Material load cell(s)	steel
Wall mount	✓
Cable length	5 m
Display device cable length	5 m
Allowed cable length display device [Max]	15 m
Levelling feet adjustable	✓
Load cells - number	4

Functions

Number of keys for operation	4
Auto-off interval(s) in mains power mode	selectable
Tare function	manual (single & multi)
Underfloor weighing	None
IP protection - load cell	IP67
IP protection - platform	no IP protection

Power Supply

Plug-in power supply type	Power adapter
Supplied plug-in power supply	Power supply & battery function (battery not included)

Environmental conditions

Humidity of environment [Min]	0 %
Humidity of environment [Max]	80 %
Ambient temperature [Min]	-10 °C
Ambient temperature [Max]	40 °C

Packing & Shipping

Readability force [d] (N)	2 d
Shipping method	Freight
Dimensions packaging (W×D×H)	1050×1050×260 mm

KERN KIP 600V20M



Weighing bridge

Net weight approx.	150 kg
Gross weight approx.	180 kg
Shipping weight	178 kg

Services (optional)

Article number for adjustment at the location of installation	961-250
Article number for conformity assessment	965-230
Article number for DAkkS calibration	963-130
Article number for certificate of conformity (verification)	969-517

Piktogramme

STANDARD

