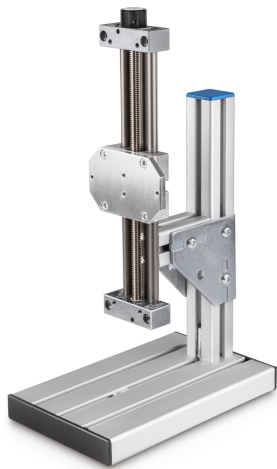


KERN TVL-XS

KERN

Manual test stand for precise compressive force measurement in the range up to 100 N



Pictograms

STANDARD



Category

Brand	Sauter
Product category	Test bench
Product group	Manual test stand
Product family	TVL-XS

Construction

Dimension (W×D×H)	300×250×160 mm
Dimension housing (W×D×H)	300×250×160 mm
Dimensions completely mounted (W×D×H)	300×250×160 mm
Material housing	aluminium
Generated force [Max]	100 N
Mounting - force application	Threaded hole M6
Mounting - force dissipation	Threaded hole M6
Travel distance per knob rotation (stroke per one turn)	2 mm
Type of drive	manual crank handle
Traverse distance [Max]	200 mm

Packing & Shipping

Readability force [d] (N)	1 d
Dimensions packaging (W×D×H)	400×260×220 mm
Net weight	4,5 kg
Shipping method	Parcel service
Net weight approx.	4,6 kg
Gross weight approx.	5,0 kg
Shipping weight	5 kg