

9632 Magnetic rail 6000 Joker Imperial 1 Ratcheting combination wrenches set, 8 pieces  
6000 Joker Ratcheting combination wrenches



<b>EAN:</b>	4013288229861	<b>Size:</b>	380x160x45 mm
<b>Part number:</b>	05020016001	<b>Weight:</b>	1510 g
<b>Article number:</b>	9632	<b>Country of origin:</b>	CZ
		<b>Customs tariff number:</b>	82041100

- 8-piece set
- With its strong magnet, the rail holds securely to metal surfaces. It can also be bolted to the wall.
- The clips hold the tools perfectly
- Practical holding function thanks to the metal plate in the jaw
- Limit stop prevents any slipping
- The double-hex geometry reduces the risk of slipping
- Return angle of only 30°
- With "Take it easy" Tool finder: colour coding by size

Ring ratchet spanner set, 8-piece set, imperial sizes; on a magnetic rail. The Joker 6000 ring ratchet spanner with holding function for hexagon screw heads and bolts. With its extra hard teeth, the exchangeable metal plate in the open end secures screws and sockets. The integrated end stop can prevent the screw head from slipping down and allows application of high torques. The double hexagon geometry ensures a positive connection with the screw or bolt and thus reduces the risk of slipping. A return angle of only 30° at the open end avoids time-consuming rotating of the wrench whilst screwdriving. Ratchet mechanism at the ring side with exceptionally high fine tothing of 80 teeth for flexibility even in confined spaces. The specially engineered geometry allows high torque transmission and high bending stiffness. Made of high-performance chromium molybdenum steel with nickel-chromium coating for high corrosion protection. With "Take it easy" Tool finder: Colour coding by size. The clips hold the tools perfectly. With its strong magnet, the rail holds securely to metal surfaces. It can also be bolted to the wall.



**Web link**  
[https://products.wera.de/en/joker\\_6000\\_joker\\_ratcheting\\_combination\\_wrenches\\_9632.html](https://products.wera.de/en/joker_6000_joker_ratcheting_combination_wrenches_9632.html)

Wera - 9632  
05020016001 - 4013288229861

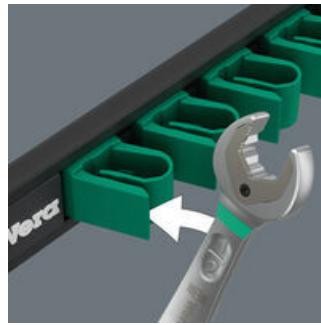
Wera Werkzeuge GmbH  
Korzter Straße 21-25  
D-42349 Wuppertal  
Tel: +49 (0)2 02 / 40 45-0  
E-Mail: info@wera.de

# 9632 Magnetic rail 6000 Joker Imperial 1 Ratcheting combination wrenches set, 8 pieces

## 6000 Joker Ratcheting combination wrenches

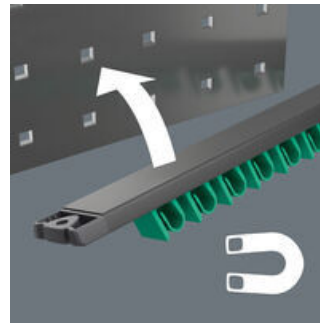


### Secure tool holding



The high-quality aluminium magnetic rail offers space for up to 11 spanners. The clamping springs hold the tools securely.

### Held by magnetic force



With its strong magnet, the rail can be attached securely to metal surfaces.

### Screw mounting



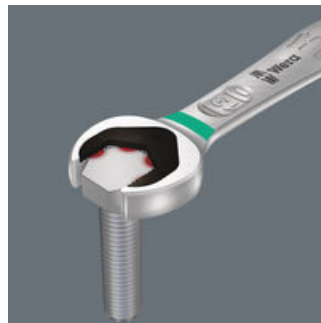
The rail can also be bolted to the wall.

### Ring ratchet spanner Joker 6000



The Joker's holding function means that nuts and bolts can be held in the jaw and easily positioned where they are needed. Fastening on to the thread can then be done quickly and safely, thanks to the innovative special stop-plate which holds the fastener. No more time-wasting searches for dropped nuts and bolts! After applying and positioning the nut or bolt, fastening can begin immediately - no additional tools required.

### Integrated limit-stop



Constant re-positioning of the wrench? Difficulty holding fasteners in confined spaces? Easing off to avoid any risks of injury or fastener damage? That was yesterday. Today, the Joker prevents slipping off of the fastener head with its integrated limit-stop - no longer is the thumb needed to act as a depth stop. This makes applications much easier and allows significantly more force to be applied during fastening jobs.

### Double-hex geometry



The Joker's clever double-hex geometry delivers a very positive connection with nuts or bolts - it's a perfect fit. And the exchangeable, hardened metal gripping plate in the Joker's open end literally bites itself into the bolt, with its extremely hard tips. Both features combine to prevent slipping, even at higher torque.

### Small return angle



Instead of 60°, the Joker only has a 30° back-pivoting angle thanks to its unique double-hex design. Along with the Joker's straight neck, this means that flipping the wrench has become a thing of the past. With the Joker, you can now loosen and tighten nuts and bolts, in situations where conventional tools fail. Particularly in confined spaces, where conventional open-jawed wrenches cannot be used. The combination of limit stop and small return angle enables effective work, even on screw pipe connections.

### Web link

[https://products.wera.de/en/joker\\_6000\\_joker\\_ratcheting\\_combination\\_wrenches\\_9632.html](https://products.wera.de/en/joker_6000_joker_ratcheting_combination_wrenches_9632.html)

Wera - 9632  
05020016001 - 4013288229861

**9632 Magnetic rail 6000 Joker Imperial 1 Ratcheting combination wrenches set, 8 pieces**  
**6000 Joker Ratcheting combination wrenches**



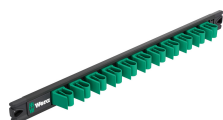
**Set contents:**

**6000 Joker Ratcheting combination wrenches, Imperial, 5/16" x 144 mm**



05073280001	1x	5/16" x 144 mm
05073281001	1x	3/8" x 159 mm
05073282001	1x	7/16" x 165 mm
05073283001	1x	1/2" x 177 mm
05073284001	1x	9/16" x 188 mm
05073285001	1x	5/8" x 212 mm
05073286001	1x	11/16" x 235 mm
05073287001	1x	3/4" x 246 mm

**9610 Joker Magnetic rail, for up to 11 spanners, empty, 30 x 370 mm**



05136413001	1x	30 x 370 mm
-------------	----	-------------

**Web link**

[https://products.wera.de/en/joker\\_6000\\_joker\\_ratcheting\\_combination\\_wrenches\\_9632.html](https://products.wera.de/en/joker_6000_joker_ratcheting_combination_wrenches_9632.html)

Wera - 9632

05020016001 - 4013288229861

Wera Werkzeuge GmbH

Korzter Straße 21-25

D-42349 Wuppertal

Tel: +49 (0)2 02 / 40 45-0

E-Mail: [info@wera.de](mailto:info@wera.de)