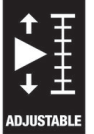


9524 Photovoltaic mounting tool set 1, 7 pieces

Series 7400 Kraffform Torque Screwdrivers



EAN:	4013288228017	Size:	240x130x65 mm
Part number:	05136043001	Weight:	938 g
Article number:	9524	Country of origin:	CZ
		Customs tariff number:	82054000

- Screwdriving tool set for installing photovoltaic systems
- Includes 2x 9108 installation tools for MC4 solar connectors (Multi-Contact)
- Includes 7442 adjustable torque screwdriver (3.0-6.0 Nm) with pistol handle
- Includes Rapidaptor 889/4/1 F bitholder with fast-rotating function for a particularly quick return movement without having to remove the tool during clockwise torque operation
- Includes Joker 6003 ring spanner, particularly suitable for narrow spaces; the special open end geometry expands the placement possibilities of the tool
- Includes 1/2" socket (with side wire cutout) size 17 for installing panel connectors
- Includes tool shaft 870/4 (adapter 1/4" hexagon to 1/2" square head) for manually operated 1/2" socket wrench inserts

7-piece tool set for installing photovoltaic systems. One adjustable torque screwdriver (pistol handle) 7442 for the measuring range 3.0-6.0 Nm. Digital torque value display. Reliable slip-over mechanism and audible signal when the set torque is reached. One 889/4/1 F Rapidaptor bitholding screwdriver with fast-rotating function for a particularly quick return movement without having to remove the tool during clockwise torque operation. One 6003 Joker ring spanner. The special open end geometry expands the placement possibilities of the tool which makes the ring spanner particularly suitable for narrow spaces. 2 installation tools for MC4 solar connectors (Multi-Contact). One socket 1/2" (with side wire cutout) size 17 for installing panel connectors, one tool shaft (adapter 1/4" to 1/2") for manually operated socket wrench inserts.

Web link

https://products.wera.de/en/torque_tools_series_7400_kraffform_torque_screwdrivers_9524.html

Wera - 9524
05136043001 - 4013288228017

Wera Werkzeuge GmbH
Korzter Straße 21-25
D-42349 Wuppertal
Tel: +49 (0)2 02 / 40 45-0
E-Mail: info@wera.de

For installing solar systems



Screwdriving tool set for installing photovoltaic systems



The set includes the screwdriving tools required for installing solar systems such as torque wrenches, ring spanners and installation tools for solar connectors.

Adjustable torque wrench



The 7442 adjustable torque screwdriver with pistol handle offers adjustable torque settings (3.0-6.0 Nm) with highest accuracy. Easy setting of the required torque without special tools. Scale value easy to read. Rapidaptor quick-release technology for lightning-fast bit changes. Unlimited loosening moments to slacken stuck screws.

Simple setting



Simple setting of the required torque by hand.

For tools with pistol handle



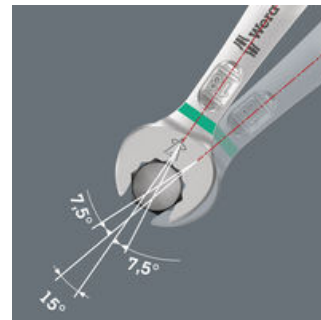
Especially for applications with Wera torque screwdrivers with pistol handle for fast and ergonomic working.

For very tight spaces



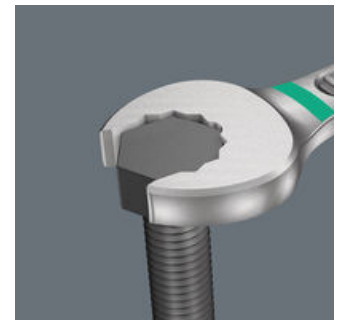
The Joker 6003 ring spanner with its special open end geometry - open end offset by 7.5° and the double hexagon profile - doubles the placement possibilities when repeatedly turning the wrench 180° around the longitudinal axis. Bolts and screw heads can be "accessed" every 15°. The Joker 6003 will automatically find the respective placement point after every turn.

Joker 6003: For return angles of less than 30°



Thanks to the open end side offset by 7.5°, double hexagon geometry and an adjusted application method (placement - screwdriving - turning - replacement - screwdriving - turning, etc), even screwdriving challenges allowing a return angle of less than 30° can be solved.

Double-hex geometry



The double hexagon geometry on the open end and ring sides secures the positive connection with the screw head or bolt and reduces the risk of slipping.

Web link

https://products.wera.de/en/torque_tools_series_7400_kraffform_torque_screwdrivers_9524.html

Wera - 9524

05136043001 - 4013288228017

Wera Werkzeuge GmbH

Korzter Straße 21-25

D-42349 Wuppertal

Tel: +49 (0)2 02 / 40 45-0

E-Mail: info@wera.de

9524 Photovoltaic mounting tool set 1, 7 pieces

Series 7400 Kraftform Torque Screwdrivers



Set contents:

Series 7400 Kraftform pistol handle, adjustable torque screwdrivers (3.0-8.8 Nm) with Rapidaptor quick-release chuck, 7442 x 3.0-6.0 Nm

05074702001 1x 7442 x 3.0-6.0 Nm



8790 HMC Deep Socket wrench insert with cutout shaft, with 1/2" drive, 17 x 76 mm

1x 17 x 76 mm



870/4 Adaptor, 1/4" x 1/2" x 72 mm

1x 1/4" x 1/2" x 72 mm



889/4/1 F Rapidaptor free-running bit holder for torque screwdrivers with pistol handle, 1/4" x 64 mm

05052501001 1x 1/4" x 64 mm



6003 Joker Combination wrench, 17 x 190 mm

05020208001 1x 17 x 190 mm



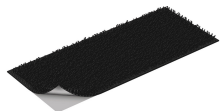
9108 Installation tool for MC4 Solar connector, 115 mm

2x 115 mm



Hook and Loop Fastener Strip 120, 120 x 50 mm

1x 120 x 50 mm



Web link

https://products.wera.de/en/torque_tools_series_7400_kraftform_torque_screwdrivers_9524.html

Wera - 9524
05136043001 - 4013288228017

Wera Werkzeuge GmbH
Korzter Straße 21-25
D-42349 Wuppertal
Tel: +49 (0)2 02 / 40 45-0
E-Mail: info@wera.de