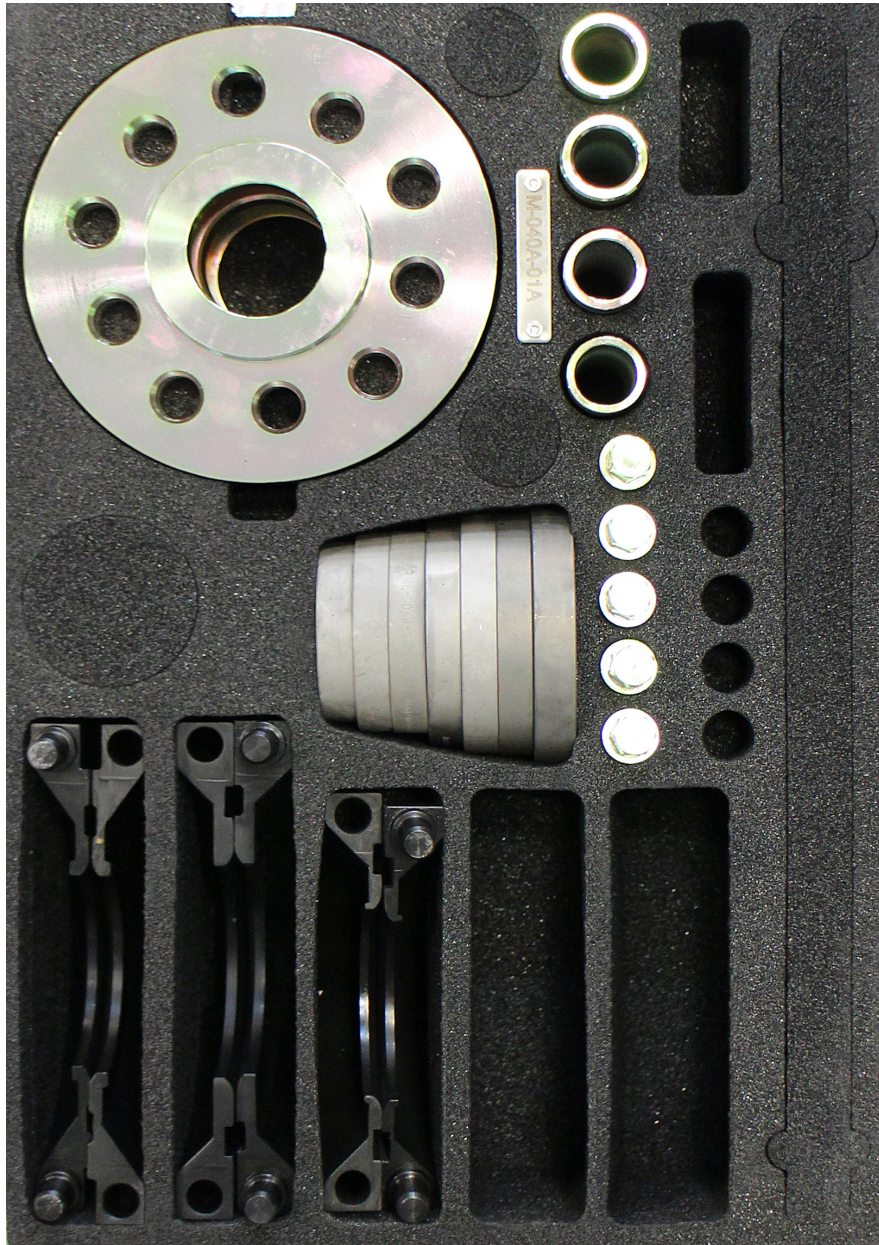




KL-0041-480 A / EA / KA Wheel Bearing Tool Kit



Product information EN
⚠ Read and understand before use!



www.gedore-automotive.com



GEDORE Automotive GmbH

Breslauer Straße 41
78166 - Donaueschingen
Postfach 1329
78154 Donaueschingen - GERMANY

☎ +49 (0) 771 / 8 32 23-0
☎ +49 (0) 771 / 8 32 23-90
✉ info.gam@gedore.com
🌐 gedore-automotive.com

GEDORE TOOLS, INC.

Only for USA, Canada & Mexico / Sólo para EE.UU., Canadá y México
Seulement pour les USA, le Canada et le Mexique
7187 Bryhawke Circle, Suite 700
North Charleston, SC 29418, USA

☎ +1-843 / 225 50 15
☎ +1-843 / 225 50 20
✉ info@gedoretools.com
🌐 gedore.com

Version 1 - 08/2021

Product description

KL-0041-480 A / EA / KA - Wheel bearing tool kit

Suitable for vehicles having a bearing Ø of 62mm: Audi A2, VW Lupo etc.; bearing Ø of 66mm: e.g. VW Polo from 2002 onwards, Škoda Fabia from 2000 onwards etc; bearing Ø of 72mm: e.g. Audi A2 from 2000 onwards, Seat Ibiza from 2002 onwards, Škoda Fabia from 2000 onwards, VW Polo from 2002 onwards and Fox, etc; bearing Ø of 78mm: e.g. Ford Focus II, C-Max (from 10/2003 onwards); Mazda 3 (from 10/2003 to 06/2009) Volvo C30, C70 II, S40 II, V50; bearing Ø of 82mm: e.g. Ford S-Max (from 2006 onwards), Galaxy (from 2006 onwards), Mondeo IV (from 2006 onwards); Volvo S60 II, S80 II, V60, V70 III (from 10/2007 onwards), XC60, XC70 II; bearing Ø of 85mm: e.g. VW T5 front and rear axle, VW Touareg / Porsche Cayenne front axle.

The **KL-0041-480 EA** wheel bearing tool kit enables the quick, safe and accurate installation of wheel hub bearing units (both with and without snap ring).

Thanks to its special design, this tool ensures that during the installation process the applied pressing force will only be distributed on the outer bearing race and not on the wheel hub. This prevents damage to the bearing. Professional installation of wheel hub bearing units is almost impossible without the use of this tool set.

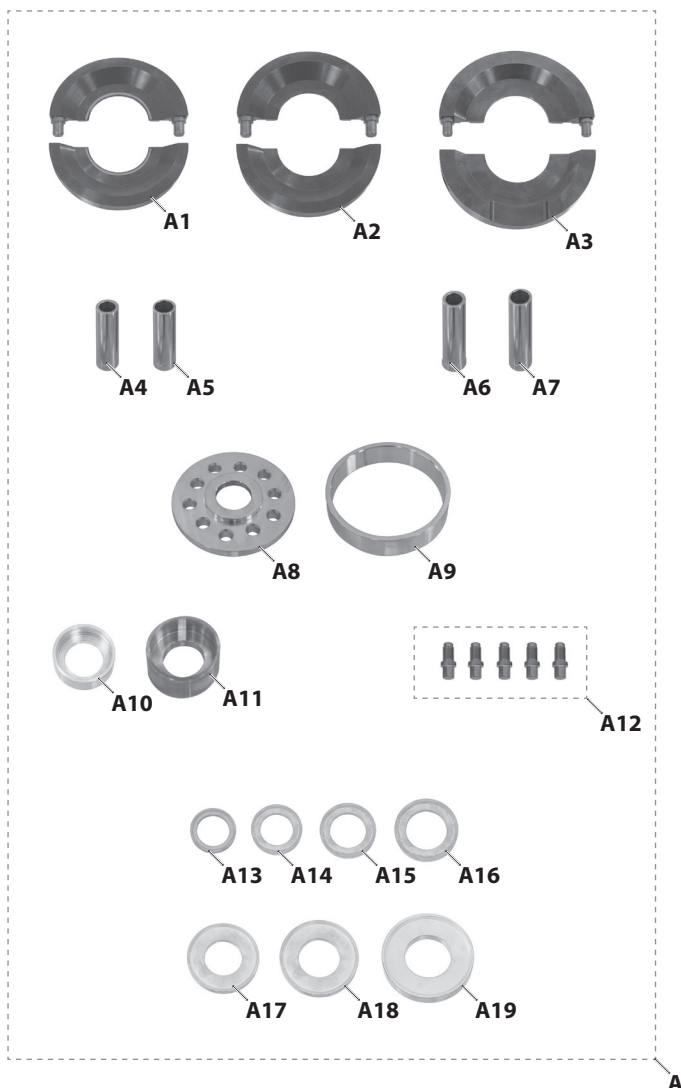
Recommended accessory:

KL-0040-2500 - Hydraulic Cylinder (17t), **KL-0215-35 M25** - Hydraulic Pump, **KL-0039-2120** - Pull Spindle with Quick-Action Clamping Nut

Empfohlenes Zubehör für Radlager Ausbau:

KL-0041-380 EA - Wheel Hub Puller

Scope of delivery/Component overview

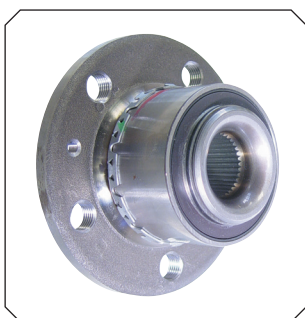
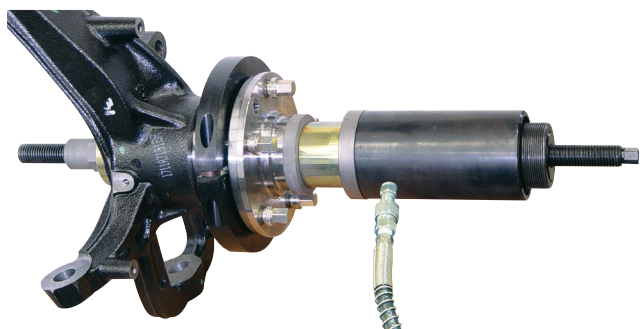


Pos.	Part no.	Description	Qty
A	KL-0041-480 A	Wheel bearing tool kit	1
A1	KL-0041-4400 C	Clamping Shells (Pair), Ø 72mm	1
A2	KL-0041-4600 D	Clamping Shells (Pair), Ø 78mm	1
A3	KL-0041-4500 B	Clamping Shells (Pair), Ø 85mm	1
A4	KL-0041-4602	Guide Sleeve, Ø 26.3mm	1
A5	KL-0041-4601	Pressure/Support Sleeve, long, Ø 30/22mm	1
A6	KL-0039-1802	Centring Sleeve, long, Ø 27.4mm	1
A7	KL-0039-1803	Centring Sleeve, long, Ø 29.7mm	1
A8	KL-0041-4608 D	Cap	1
A9	KL-0041-4607	Housing	1
A10	KL-0039-1674	Pressure/Support Sleeve, short, Ø 74/66mm	1
A11	KL-0039-1682	Pressure/Support Sleeve, short, Ø 82/74mm	1
A12	KL-0041-3931	Pressure Screw, M14x1.5	5
A13	KL-0039-1265	Pressure Ring, Ø 65mm	1
A14	KL-0039-1272	Pressure Ring, Ø 72mm	1
A15	KL-0039-1273	Pressure Ring, Ø 73mm	1
A16	KL-0039-1283	Pressure Ring, Ø 83mm	1
A17	KL-0039-1288	Pressure Ring, Ø 88mm	1
A18	KL-0039-1289	Pressure Ring, Ø 89mm	1
A19	KL-0039-1502	Pressure Ring, Ø 93mm	1
ⓘ Aufbewahrungssystem: Kunststoffkoffer - KL-4999-1392			
ⓘ KL-0041-480 EA in Schaumstoffeinlage - KL-4999-1317 A KL-0041-480 KA im Kunststoffkoffer - KL-44999-1392			

📷 1: KL-0041-480 KA



📷 2: Anwendungsbeispiel



Safety instructions and regulations

- ✔ **Prior to using** the tool, read and understand all safety instructions and **observe** them for **safe use**!
- ✔ Ensure that maintenance and repair work on motor vehicles is only carried out by trained specialists in specialist automotive workshops, taking into account occupational safety and accident prevention as well as the instructions of the vehicle manufacturer!
- ✔ **Prior to each use**, check the tool **carefully** for damage, loose parts or unauthorised modifications. **Never** use it if you notice any such deficiencies!
- ✔ Use the tool **as intended** and **always** observe the vehicle-specific application procedures in the repair guide of the vehicle manufacturer!
- ✔ **Always** wear your personal protective equipment (*for example safety goggles, protective gloves, safety shoes*) when working!

EN

Scope of application

The large wheel bearing tool set - **KL-0041-480A / EA / KA** covers the entire application range of the smaller wheel bearing tool sets **KL-0041-44 C**, **KL-0041-45 B** and **KL-0041-46 D**.

Depending on the vehicle **please consult the corresponding operating instructions** for the respective tool set.
(see application table below)

Overview operating instructions

suitable for ...	wheel bearing Ø:	see instructions:
VW Polo, Fox / Audi A2 / Seat Ibiza / Škoda Fabia	Ø 62mm	KL-0041-44 C
VW T5, Touareg / Porsche Cayenne	Ø 85mm	KL-0041-45 B
Ford / Mazda / Volvo	Ø 78 + 82mm	KL-0041-46 D

GEDORE-Werkzeugfabrik GmbH & Co. KG

Remscheider Straße 149
42899 - Remscheid
Postfach 120361
47873 Remscheid
GERMANY

Vertrieb DEUTSCHLAND

☎ +49 (0) 2191 / 596-0
☎ +49 (0) 2191 / 596-230
✉ info@gedore.com
🌐 www.gedore.com

Sales INTERNATIONAL

☎ +49 (0) 2191 / 596-910
☎ +49 (0) 2191 / 596-911
✉ info@gedore.com
🌐 www.gedore.com

GEDORE TOOLS, INC.

Only for USA, Canada & Mexico
Sólo para EE.UU., Canadá y México
Seulement pour les USA, le Canada et le Mexique
7187 Bryhawke Circle, Suite 700, North Charleston, SC 29418, USA

☎ +1-843 / 225 50 15
☎ +1-843 / 225 50 20
✉ info@gedoretools.com
🌐 www.gedoretools.com

Worldwide GEDORE service centers and offices are listed on the Internet at: www.gedore.com

GEDORE Automotive GmbH

Breslauer Straße 41
78166 - Donaueschingen
Postfach 1329
78154 Donaueschingen
GERMANY

Vertrieb DEUTSCHLAND

☎ +49 (0) 771 / 8 32 23-0
☎ +49 (0) 771 / 8 32 23-90
✉ info.gam@gedore.com
🌐 gedore-automotive.com



www.gedore-automotive.com