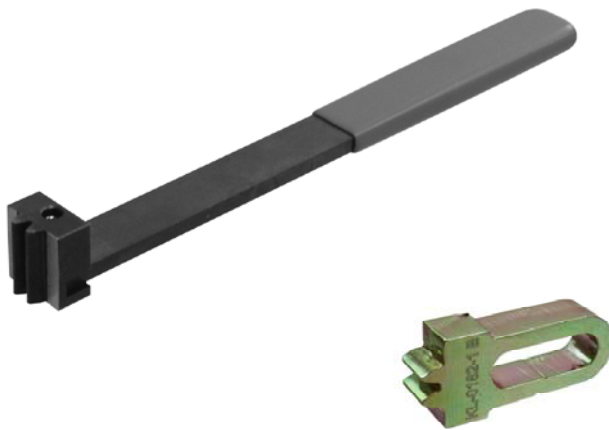


## Reaction Wrench (universal) Flywheel Locking Tool



01/2020

KL-0110 A  
KL-0182-1 B



EN

[www.gedore-automotive.com](http://www.gedore-automotive.com)

### GEDORE Automotive GmbH

Breslauer Straße 41  
78166 - Donaueschingen  
Postfach 1329  
78154 Donaueschingen - GERMANY

T +49 (0) 771 / 8 32 23-0  
F +49 (0) 771 / 8 32 23-90  
info.gam@gedore.com  
www.gedore-automotive.com

### GEDORE TOOLS, INC.

Only for USA, Canada & Mexico  
Sólo para EE.UU., Canadá y México  
Seulement pour les USA, le Canada et le Mexique

7187 Bryhawke Circle, Suite 700  
North Charleston, SC 29418, USA  
Phone +1-843 / 225 50 15  
Fax +1-843 / 225 50 20  
info@gedoretools.com

### GEDORE WELTWEIT / GEDORE WORLDWIDE

Weltweite GEDORE Servicestellen / Niederlassungen finden Sie im Internet unter: [www.gedore.com](http://www.gedore.com)  
Worldwide GEDORE service centers / offices are listed on the Internet at: [www.gedore.com](http://www.gedore.com)

KL-0110 A



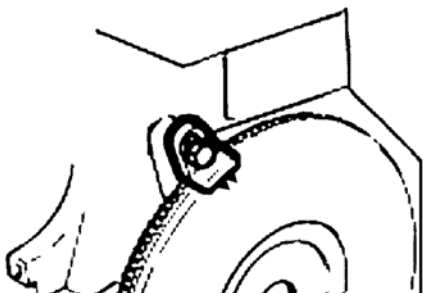
Application example: KL-0110 A



KL-0182-1 B



Application example: KL-0182-1 B



## KL-0110 A Reaction Wrench (universal)

Universal application.

### Field of Application

For locking the flywheel.

### Advantages

- No damage to the flywheel gear rim.
- Universal application.

### Technical Data

Length: ..... 250 mm  
 Weight: ..... 0.5 kg

## KL-0182-1 B Flywheel Locking Tool

Universal application.

### Field of Application

For locking the flywheel when the gear box has been removed.

### Advantages

- No damage to the flywheel gear rim.
- Universal application.

### Warnings and Notes

- Any work on engines should only be performed by qualified personnel observing and complying with the directions, provisions, and safety regulations issued by the vehicle manufacturer.
- Only the vehicle manufacturer's data apply to all work done on the vehicle.