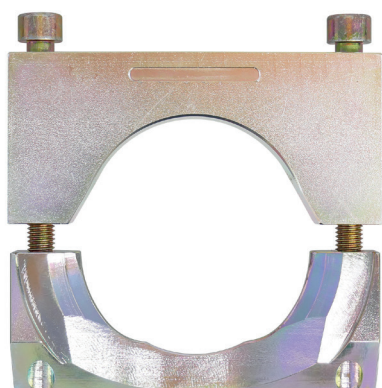


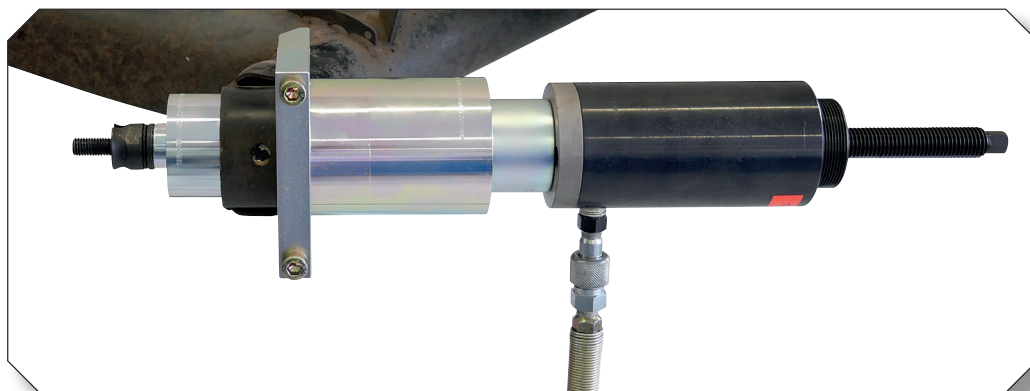
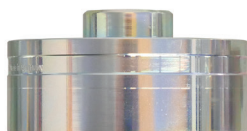
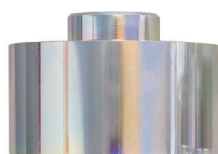


## KL-0215-590

### Silent Block Tool Ford Fiesta / VW Polo



**Operating instructions** EN  
 ⚠ Read and understand before use!



[www.gedore-automotive.com](http://www.gedore-automotive.com)



**GEDORE Automotive GmbH**

Breslauer Straße 41  
 78166 - Donaueschingen  
 Postfach 1329  
 78154 Donaueschingen - GERMANY

☎ +49 (0) 771 / 8 32 23-0  
 ☎ +49 (0) 771 / 8 32 23-90  
 ✉ info.gam@gedore.com  
 🌐 gedore-automotive.com

**GEDORE TOOLS, INC.**

Only for USA, Canada & Mexico / Sólo para EE.UU., Canadá y México  
 Seulement pour les USA, le Canada et le Mexique  
 7187 Bryhawke Circle, Suite 700  
 North Charleston, SC 29418, USA

☎ +1-843 / 225 50 15  
 ☎ +1-843 / 225 50 20  
 ✉ info@gedoretools.com  
 🌐 gedore.com



**ENGLISH**

**EN**

## Address of the manufacturer

**GEDORE Automotive GmbH**

Breslauer Straße 41 // 78166 Donaueschingen - GERMANY

☎ +49 (0)771/83223-71 // ✉ info.gam@gedore.com

## Imprint

In the course of improvement and adaptation to the state of the art, we reserve the right to make changes with regard to appearance, dimensions, weights and properties, and performance.

This does not imply any claim to correction or subsequent delivery of already delivered products. Deletions can be made at any time without any legal claim arising.

Instructions for use and safety are not binding. They never substitute for any legal or trade association regulations.

We do not accept any liability for printing errors.

Any reproduction, in whole or in part, requires the prior written consent of **GEDORE Automotive GmbH**.

All rights reserved worldwide.

© Copyright by **GEDORE Automotive GmbH** Donaueschingen (GERMANY)

We refer to our general terms and conditions, which can be found in the imprint at:

[www.gedore-automotive.com](http://www.gedore-automotive.com)



## CONTENTS

<b>1. READ AND UNDERSTAND FOR YOUR SAFETY</b> .....	<b>4</b>
1.1 Target group.....	4
1.2 Obligations of the owner.....	4
1.3 Intended use .....	4
1.4 Reasonably foreseeable misuse .....	4
1.5 Personal protective equipment.....	5
1.6 Labelling of the warnings.....	5
1.7 Basic warnings .....	5
1.8 Basic safety instructions .....	6
1.9 Work environment .....	7
1.10 Emissions.....	7
1.11 Maintenance .....	7
1.12 Troubleshooting.....	7
<b>2. PRODUCT DESCRIPTION</b> .....	<b>8</b>
2.1 KL-0215-590 - Silent block tool Ford Fiesta / VW Polo .....	8
2.2 Scope of delivery / spare parts overview .....	8
2.3 Specifications.....	8
<b>3. PREPARATION</b> .....	<b>9</b>
3.1 Checking the scope of delivery .....	9
3.2 Assembling drive parts .....	9
3.3 Preparing the tool.....	10
3.4 Preparing the vehicle .....	10
<b>4. TYPICAL EXAMPLE</b> .....	<b>11</b>
4.1 Removing the rear axle bearing.....	11
4.2 Inserting the silent block.....	13
<b>5. CARE / STORAGE</b> .....	<b>14</b>
<b>6. REPAIR</b> .....	<b>14</b>
<b>7. ENVIRONMENTALLY FRIENDLY DISPOSAL</b> .....	<b>14</b>

## 1. READ AND UNDERSTAND FOR YOUR SAFETY



Read and understand these operating instructions **before using** the silent block tool, and observe all safety and warning instructions! Misuse can result in **DEATH** or **SEVERE INJURIES**! These operating instructions are an integral part of the spring compressor. Keep them at a safe place for future reference, and always pass them on to subsequent users of the silent block tool! The silent block tool complies with the recognised rules of technology as well as the relevant safety regulations!

### 1.1 Target group

These operating instructions are **exclusively** intended for skilled personnel in specialised motor vehicle workshops!

The silent block tool **may only be** used by skilled personnel in specialised motor vehicle workshops who are familiar with the basic regulations on work safety and accident prevention!

EN **Never** allow unauthorised, inexperienced persons, minors and children, or persons with limited physical, sensory, and mental abilities to use the silent block tool!

### 1.2 Obligations of the owner

Pursuant to the German Ordinance on Industrial Safety and Health (*BetrSichV*), employers are obliged to provide their employees with safe work equipment in accordance with the recognised rules of technology and the relevant safety regulations!

- ✔ The owner of the silent block tool **must** ensure that **only** trained personnel in specialised vehicle workshops use the silent block tool!
- ✔ The owner of the silent block tool **must** ensure that the instructions for use are available to the user and that the user has completely read and understood the instructions for use **before** using the silent block tool!
- ✔ The owner of the silent block tool **must** ensure that the user is familiar with the basic regulations on work safety and accident prevention, and that the personal protective equipment is available to him!

### 1.3 Intended use

The silent block tool ...

- ✔ **may only be used** for forcing out and in rear axle bearings on vehicles as described in **chapter 2 - Product description!**
- ✔ **may only** be used up to a **max. load of 7 tonnes!**
- ✔ **may only** be operated by hand with muscle power with a manual drive or a manually operated **GEDORE Automotive** hydraulic cylinder/pump combination with pressure gauge for safe pressure control!
- ✔ **may only** be used with **GEDORE Automotive** genuine spare parts and accessories!
- ✔ **may only** be used in the way described in these operating instructions!
- ⚠ Any other use can result in **DEATH** or **SEVERE INJURIES**!

### 1.4 Reasonably foreseeable misuse

The silent block tool ...

- ✔ **must never** be used for forcing out or in other parts than those intended for it!
- ✔ **must never** be used together with an impulse or impact screwdriver!
- ✔ **must never** be used with a machine-operated drive or a machine-operated hydraulic cylinder/pump combination!
- ✔ **must never** be used with a drive other than that intended for it!
- ✔ **must never** be used for batch processing with many forcing in/out processes within a few minutes!
- ✔ **must never** be used with a bridged, modified, or removed safety device!
- ✔ **must never** be modified, converted, or used for other purposes without authorisation!
- ⚠ Use the silent block tool **always** as intended. Any other use can result in **DEATH** or in **SEVERE INJURIES**!

### 1.5 Personal protective equipment

For your safety, **always** wear personal protective equipment when using the silent block tool! The silent block tool can bring about mechanical hazards, such as crushing, cutting, and shock injuries.



Always wear **EYE PROTECTION** (for example to DIN EN 166, OSHA 29 CFR 1910.133, ANSI Z87) when using the silent block tool to protect yourself against flying parts or particles!

► Flinging parts or particles may cause **SEVERE INJURIES** to your **eyes**!



Always wear **PROTECTIVE GLOVES** (for example to DIN EN 388, OSHA 29 CFR 1910.138, ANSI 105) when using the silent block tool to protect yourself against sharp edges and crushing between parts!

► Sharp edges and crushing between parts may cause **SEVERE INJURIES** to your **hands**!



Always wear **SAFETY SHOES** (for example to DIN EN ISO 20345, OSHA 29 CFR 1910.136, ANSI Z41) when using the silent block tool to protect yourself against dropping parts!

► Dropping parts can cause **SEVERE INJURIES** to your **feet and toes**!

EN

### 1.6 Labelling of the warnings

**Warnings** warn of potential **hazards**. **Always** observe these warnings to avoid **DEATH** or **INJURIES**!

**For better differentiation, warnings in these operating instructions are classified as follows:**

Warning sign	Meaning
	Indicates a hazardous situation which, if not avoided, could cause <b>DEATH</b> or <b>SEVERE INJURIES</b> .
	Indicates a hazardous situation which, if not avoided, could cause <b>MODERATE</b> or <b>MINOR INJURIES</b> .
	Indicates a situation which, if not avoided, can cause damage to the tool or an object in its vicinity.
	<b>Note</b> on important information and useful tips.

### 1.7 Basic warnings

#### **⚠ WARNING - Danger to life from MISUSE**

**MISUSE** can cause the silent block tool to slip, break and thus drop or be hurled about. This can cause **DEATH** or **SEVERE INJURIES**!

► Read and understand these operating instructions **before using** the silent block tool, and observe all safety and warning instructions for **safe use**!

► **Always** work with the silent block tool in accordance with the basic regulations on work safety and accident prevention!

► **Only** use the silent block tool as intended and as described in these operating instructions!

► **Always** observe the vehicle-specific application procedures in the vehicle manufacturer's repair guide!

► **Never** use the silent block tool if it is damaged or has loose parts or unauthorised modifications!

► **Never** use the silent block tool with a machine-operated drive or any other drive than intended! Drive it **only** by hand and with muscle power; use a manual drive or a manually operated **GEDORE Automotive** hydraulic cylinder/pump combination with a pressure gauge for safe pressure control!

► **Never** use the silent block tool for batch processing with numerous forcing in/out processes within a few minutes!

► **Always** wear your personal protective equipment (*safety goggles, protective gloves, safety shoes*) during work!

► **Never** hit the silent block tool with a hammer or anything similar!

## ⚠ WARNING - Danger to life from OVERLOAD

**OVERLOAD** can cause the silent block tool to slip, break, and thus drop or fling around. This can cause **DEATH** or **SEVERE INJURIES!**

- ✔ **Never** exceed the **maximum loading capacity** of the silent block tool!
- ✔ **Never** use the silent block tool if it is damaged or has loose parts or unauthorised modifications!
- ✔ **Never** use the silent block tool with a machine-operated drive or any other drive than intended! Drive it **only** by hand and with muscle power; use a manual drive or a manually operated **GEDORE Automotive** hydraulic cylinder/pump combination with a pressure gauge for safe pressure control!
- ✔ **Never** use the silent block tool for batch processing with numerous forcing in/out processes within a few minutes!
- ✔ **Always** wear your personal protective equipment (*safety goggles, protective gloves, safety shoes*) during work!

## ⚠ CAUTION - Risk of injury from DROPPING and FLINGING AROUND

There is a risk of the silent block tool **DROPPING** or **FLINGING AROUND** during preparation and use (overhead, for example). This can cause **SEVERE INJURIES!**

- ✔ Secure the pulling device against falling down and flinging around, for example by using the **GEDORE** safety retaining belts - **KL-0040-2590** or **KL-0040-2592**, or, alternatively, the retaining device **KL-0040-258 A!**
- ✔ **Never** stand in axial extension of the silent block tool when it is under load!
- ✔ **Always** make sure that the silent block tool is securely attached to the vehicle!
- ✔ Avoid dropping the silent block tool **under any circumstances**, especially when it is under load!
- ✔ **Never** leave the silent block tool unattended in loaded condition on the vehicle!
- ✔ **Always** carry out all preparations of heavy parts with the help of a second specialist!
- ✔ **Always** wear your personal protective equipment (*safety goggles, protective gloves, safety shoes*) during work!

## ATTENTION - Risk of DAMAGE

The vehicle, the silent block, and the silent block tool can be **DAMAGED**.

- ✔ **Always** observe the installation position of the silent block specified by the vehicle manufacturer!
- ✔ **Always** observe vehicle-specific application procedures in the vehicle manufacturer's repair guide.
- ✔ **Prior to each use**, check the moving parts and the spindle of the silent block tool for sufficient lubrication. If necessary, lubricate it **only** with molybdenum disulphide paste (for example, **GEDORE Automotive - KL-0014-0030!**)
- ✔ **Never** use the silent block tool for batch processing with numerous forcing in/out processes within a few minutes!
- ✔ **Never** clamp the silent block tool in a vice.

## 1.8 Basic safety instructions

For your safety, **always** observe the following safety precautions when using the silent block tool in order to avoid injuries and material damage caused by misuse or unsafe handling.

- ✔ Read and understand these operating instructions **before using** the silent block tool, and observe all safety and warning instructions for **safe use!**
- ✔ **Always** observe the vehicle-specific application procedures in the vehicle manufacturer's repair guide!
- ✔ **Always** work with the silent block tool in accordance with the basic regulations on work safety and accident prevention!
- ✔ **Never** use the silent block tool when you are tired or under the influence of alcohol, drugs, or medication!
- ✔ **Before each use**, check the silent block tool **carefully** for damage, loose parts, or unauthorised modifications. **Never** use it if you notice any such deficiencies!
- ✔ Use **only** genuine **GEDORE Automotive** spare parts and accessories!
- ✔ **Before using** the silent block tool, make sure that **no** unauthorised persons are in the immediate environment!
- ✔ **Always** observe the **max. loading capacity** when using the silent block tool, and **never** exceed it!
- ✔ **Never** stand in axial extension of the silent block tool when it is under load!
- ✔ **Never** use the silent block tool with any other drive than intended!

- ✔ **Always** wear your personal protective equipment (*safety goggles, protective gloves, safety shoes*) during work!
- ✔ Interrupt your work **immediately** if you are unsure about using the silent block tool, and contact **GEDORE Automotive GmbH if necessary!**
- ✔ For safety reasons, ensure that a damaged silent block tool is no longer used! Professional inspection and repair may only be carried out by specially trained personnel at **GEDORE Automotive GmbH!**
- ✔ **Always** use the silent block tool as intended. Non-compliance will invalidate any warranty claim and may significantly reduce its durability!

## 1.9 Work environment

For your safety, **only** use the silent block tool in a safe working environment.

- ✔ The workplace **must** be clean and tidy.
- ✔ The workplace **must** be sufficiently large and illuminated.
- ✔ The workplace **must** be on a solid and non-skidding floor.
- ✔ The workplace **must** be safeguarded against access of unauthorised persons.
- ✔ The workplace **must** have a room temperature between -10°C and +40°C.

## 1.10 Emissions

Molybdenum disulphide paste and hydraulic oil can drip or escape when using the silent block tool and thus pose a hazard to the environment.

- ✔ **Immediately** remove leaking hydraulic oil as well as excess molybdenum disulphide paste (using oil binding agents or a cleaning cloth, for example).
- ✔ In case of skin contact with hydraulic oil, clean the affected area **immediately** with degreasing soap and water.
- ✔ Dispose of pollutants such as hydraulic oil and molybdenum disulphide paste in an **environmentally friendly** manner.
- ✔ Safety data sheets *in accordance with Regulation (EC) No. 1907/2006*, for hydraulic oil (**Alsus Hyd HLP 32**) as well as for molybdenum disulphide paste (**MOLYKOTE® G-N PLUS PASTE**) can be found on the manufacturer's site on the Internet (**World Wide Web**) or, if required, contact **GEDORE Automotive GmbH**.

## 1.11 Maintenance

Perform maintenance on the silent block tool **at regular intervals** and **only** when the tool is depressurised! Poor and improper maintenance can damage the silent block tool, thus causing **DEATH** or **SEVERE INJURIES!**

### Prior to each use:

- ✔ **Prior to each use**, check the silent block tool **carefully** for damage, loose parts or unauthorised modifications!
- ✔ Prior to **each use** of the silent block tool, check the spindle for contamination and damage. If necessary, clean it, and subsequently lubricate it **only** with molybdenum disulphide paste! (For example, **GEDORE Automotive - KL-0014-0030**)

### Recommended: Every 24 months:

- ✔ Have the silent block tool professionally checked **every 24 months** by authorised specialists from **GEDORE Automotive GmbH!**

## 1.12 Troubleshooting

**Only** perform troubleshooting on the silent block tool when it is depressurised!

**Problem:** The spindle clamping nuts of the silent block tool are sluggish. (*Mechanical drive*)

**Reason:** The spindle is contaminated or insufficiently lubricated, or wrong lubricant was used.

**Remedy:** Clean the spindles, check them for damage, and lubricate them **exclusively** with molybdenum disulphide paste. (For example, **GEDORE Automotive - KL-0014-0030**)

**Problem:** Hydraulic oil escapes from the hydraulic coupling between hydraulic cylinder and hand pump.

**Reason:** Hydraulic coupling contaminated or loose.

**Remedy:** Clean and retighten the hydraulic coupling. Top up lacking hydraulic oil (**HLP 32**) at the hand pump.

**Problem:** The hydraulic hand pump does not build up pressure or only very slowly.

**Reason:** The pressure release valve on the hydraulic hand pump is open or hydraulic oil is missing.

**Remedy:** Close the pressure release valve on the hydraulic pump completely. Top up lacking hydraulic oil (**HLP 32**) at the hydraulic hand pump.

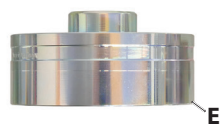
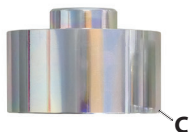
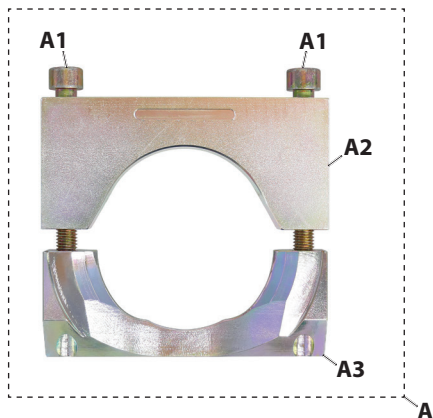
## 2. PRODUCT DESCRIPTION

### 2.1 KL-0215-590 - Silent block tool Ford Fiesta / VW Polo

Fits rear axle bearings on Ford Fiesta VI (MK6/JA8/JR8) and VW Polo (6R, 9N), etc.

Alternative tools: Ford 308-095, 308-109

For quick and professional insertion and removal on the wishbone. Even heavily seized bearings do not pose a problem. High time savings as the work can be carried out directly on the vehicle. The drive can be hydraulic or mechanical.



### 2.2 Scope of delivery/Single parts overview

Item	Part no.	Description	Qty.
A	KL-0215-5901	Pair of clamping jaws	1
A1	KL-0215-4003	Cap screw M10 x 80mm	2
A2	KL-0215-5901-1	Clamping jaw without thread	1
A3	KL-0215-5901-2	Clamping jaw with thread	1
B	KL-0039-1788	Support sleeve removal	1
C	KL-0215-5902	Pressure piece removal	1
D	KL-0215-5903	Support sleeve installation	1
E	KL-0215-5904	Pressure piece installation	1

### 2.3 Specifications

For silent block diameters: ..... 71/72mm

Max. load: ..... 7t

Weight: ..... 4kg

**Required drive parts: see Chapter 3.2**





### 3. PREPARATION

#### ⚠ WARNING

Misuse or **overloading** the silent block tool can cause it to slip, break, and thus drop or fling around. This can cause **DEATH** or **SEVERE INJURIES!**

- ✔ **Prior to using** the spring compressor, read and understand **all** safety instructions and warnings listed in **Chapter 1** and **always observe** them for safe use!
- ✔ Use the silent block tool **as intended**, and **always** carry out maintenance and repairs in compliance with the regulations on occupational safety and accident prevention as well as the vehicle manufacturer's instructions!
- ✔ **Before each use**, check the silent block tool **carefully** for damage, loose parts, or unauthorised modifications. **Never** use it if you notice any such deficiencies!
- ✔ **Always** wear your personal protective equipment (*such as safety goggles, protective gloves, safety shoes*) during work!

#### 3.1 Checking the scope of delivery

Prior to preparing or using the silent block tool, check that all parts of the scope of delivery are available (*see chapter 2.*), and follow the instructions below.

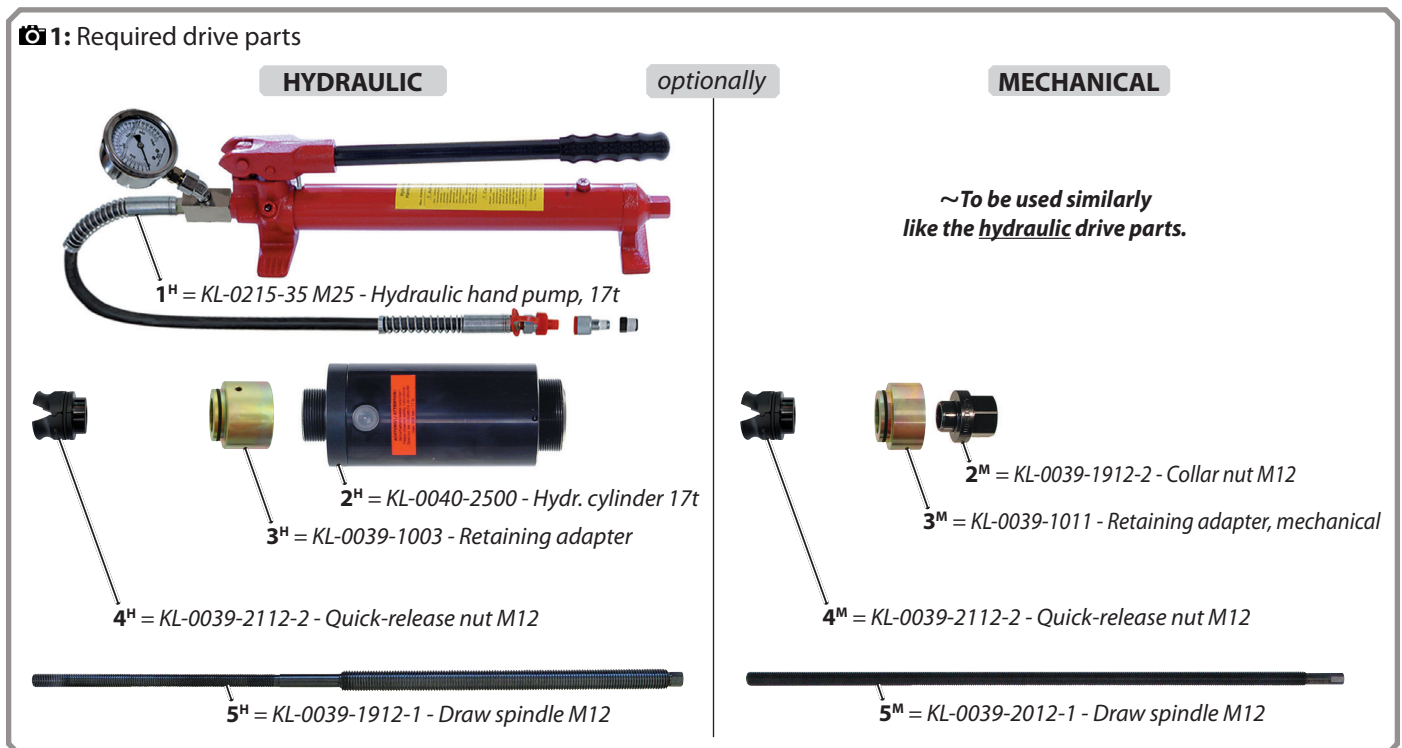
#### 3.2 Assembling drive parts

#### ⚠ WARNING

Using a machine-operated drive can cause the silent block tool to slip, break, and thus drop or fling around. This can cause **DEATH** or **SEVERE INJURIES!**

✔ **Never** use the silent block tool with a machine-operated drive or any other drive than intended! Drive it **only** by hand and with muscle power; use a manual drive or a manually operated **GEDORE Automotive** hydraulic cylinder/pump combination with a pressure gauge for safe pressure control!

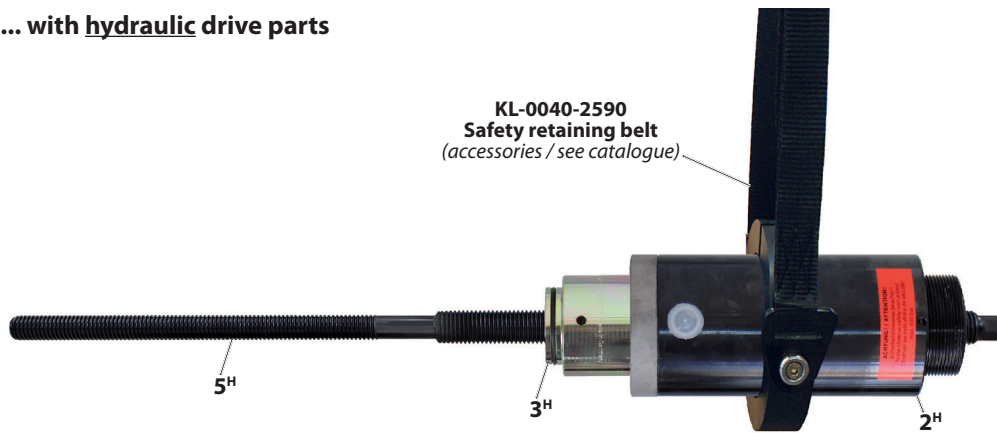
1. Assemble the required drive parts for the silent block tool, either **HYDRAULICALLY** or **MECHANICALLY**, as shown in **Fig. 1**.
- ① The application example in **Chapter 4**. is described with **hydraulic** drive parts. The procedure with **mechanical** drive parts always follows the same principle.
- ① *For other drive components see the GEDORE Automotive catalogue.*



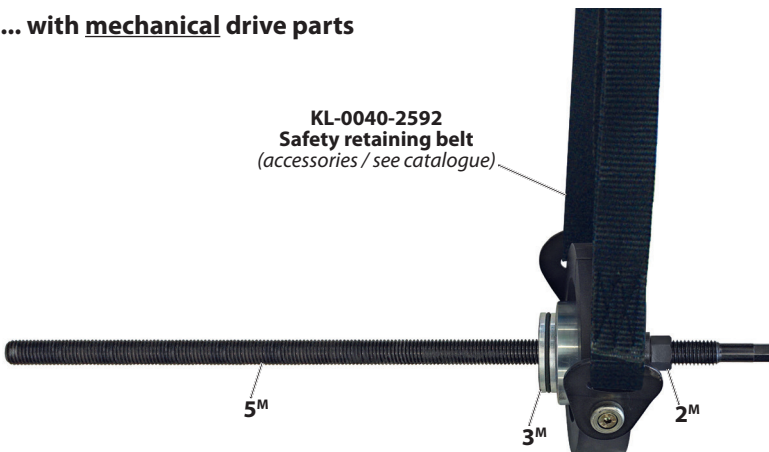
## 3.3 Preparing the tool

**📷2:** Preparing the tool...

... with **hydraulic** drive parts



... with **mechanical** drive parts

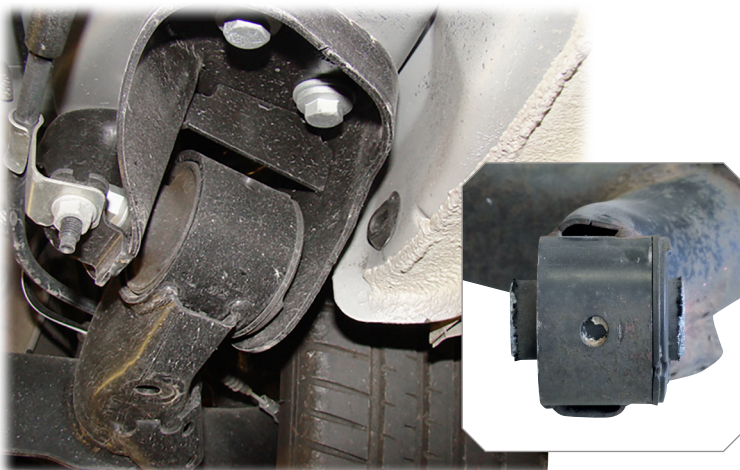


1. Assemble the silent block tool accordingly depending on the drive type, either **hydraulic** or **mechanical**.

ⓘ The safety harnesses **KL-0040-2590** or **KL-0040-2592**, which are available as an *accessory*, allow the securing of the silent block tool against dropping.

## 3.4 Preparing the vehicle

**📷3:** Preparing the vehicle...



1. Safely lift the vehicle and prepare all necessary parts for the following work in accordance with the manufacturer's instructions.

**For example:**

Remove the wheels from the rear axle. Unscrew the respective connection on the rear axle and lower the axle a bit.

## 4. TYPICAL APPLICATION

This typical application describes the **hydraulic** pulling out and forcing in of a rear axle bearing directly on the vehicle. In general, both the **mechanical** or **hydraulic** procedures follow the same principle.

### 4.1 Pulling the rear axle bearing

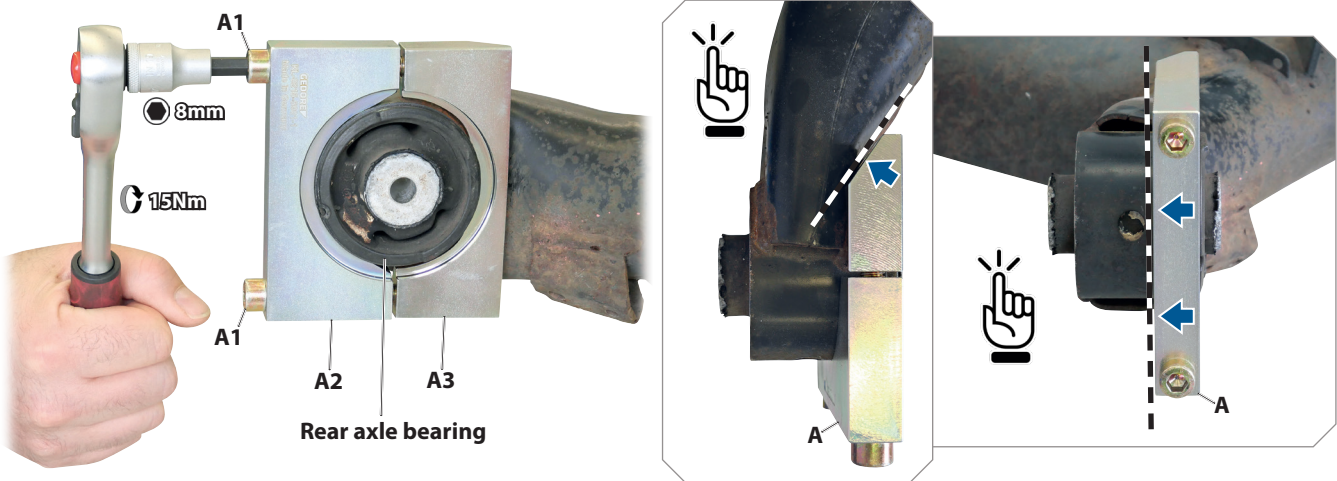
**📷 4:** Place the pair of clamping jaws [A] in the correct position over the rear axle bearing on the axle and clamp them.

#### CAUTION

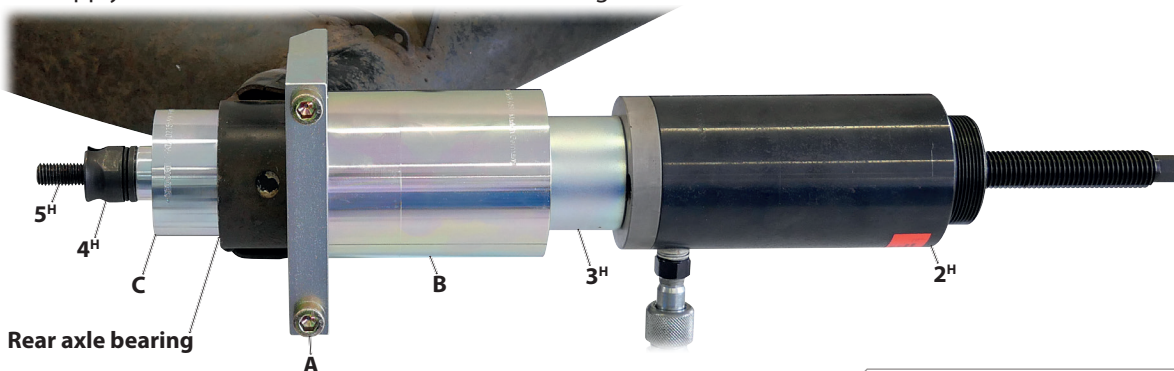
The silent block tool can be damaged when the rear axle bearing is pulled out.

► Make **absolutely** sure that the clamping jaws [A2] and [A3] are correctly mounted at right angles to the axle!

1. First loosen the two cap screws [A1] and mount the pair of clamping jaws [A] in the correct position as shown on the rear axle bearing at the rear axle. To clamp the pair of clamping jaws [A], tighten the two cap screws [A1] to **15Nm**.



**📷 5:** Apply the silent block tool to the rear axle bearing.

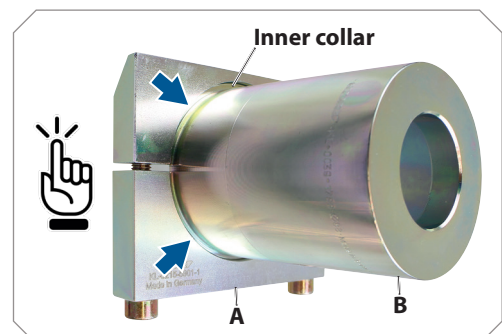


#### CAUTION

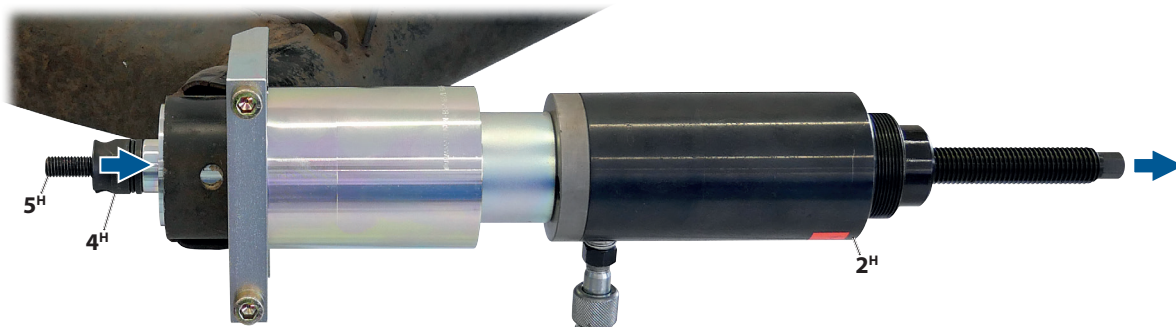
The silent block tool can be damaged when the rear axle bearing is pulled out.

► The support sleeve [B] **must** rest completely and evenly on the **inner collar** of the clamping jaw pair [A]!

2. Mount all the required components of the silent block tool in the correct position as shown on the rear axle bearing.



**6:** Pull the rear axle bearing out of the axle.

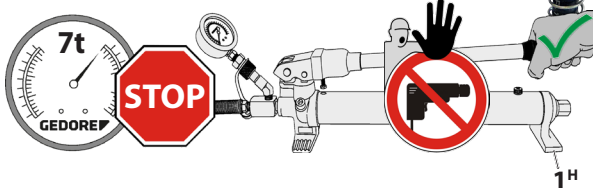


## ⚠ WARNING

There is the risk of the silent block tool breaking and flinging around when a machine-operated drive is used. This can cause **DEATH** or **SEVERE INJURIES**.

✔ Use the silent block tool **exclusively** with a manual drive or a manually operated **GEDORE** Automotive hydraulic cylinder / pump combination with a pressure gauge for reliable pressure control!

3. Connect the hydraulic pump [1<sup>H</sup>] to the hydraulic cylinder [2<sup>H</sup>].



## ⚠ WARNING

When pulling out the rear axle bearing, the draw spindle [5<sup>H/M</sup>] may break, and the silent block tool may fling around or drop. This can cause **DEATH** or **SEVERE INJURIES**.

✔ **Never** exceed the draw spindle's [5<sup>H/M</sup>] **maximum load of 7 tonnes!**

✔ **Constantly** watch the pressure on the hydraulic pump's [1<sup>H</sup>] pressure gauge while pulling out.

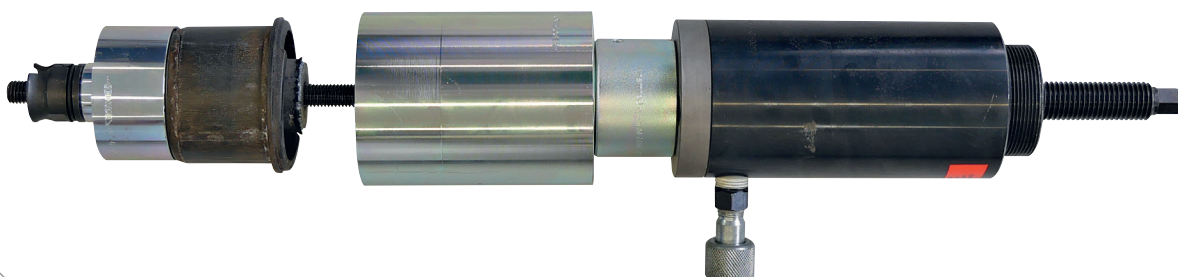
✔ Before use, **always** secure the silent block tool against flinging around or falling off the vehicle, for example by using the safety retaining belt which is available as an *accessory* - **KL-0040-2590** or **KL-0040-2592!**

✔ While pulling out, **never** stand never in the axial extension of the draw spindle [5<sup>H/M</sup>].

4. While operating the hydraulic pump [1<sup>H</sup>], watch the pressure on the pressure gauge and remove the wheel bearing from the axle.

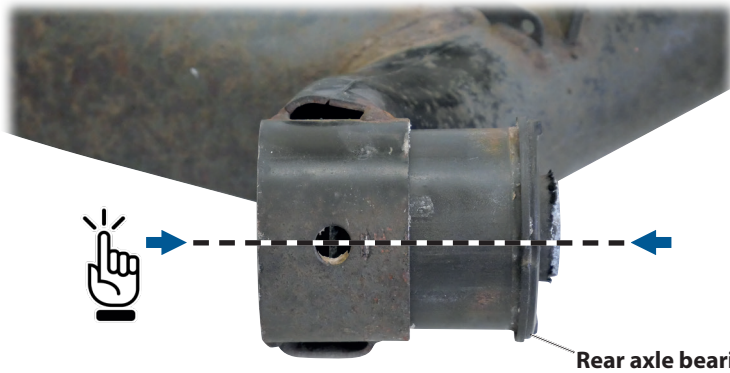
① The maximum stroke of the hydraulic cylinder [2<sup>H</sup>] is 50mm! As soon as it is reached: Interrupt the forcing process, relieve the pressure at the hydraulic pump [1<sup>H</sup>], re-tighten the clamping nut [4<sup>H</sup>] until it is fully applied, and continue the forcing process.

Rear axle bearing removed



**4.2 Inserting the rear axle bearing**

**Fig 7:** Insert the rear axle bearing in the correct position on the axle according to the manufacturer's specifications.



**CAUTION**

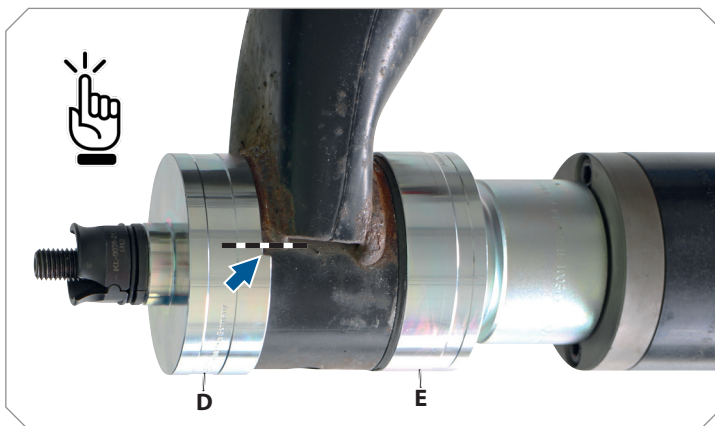
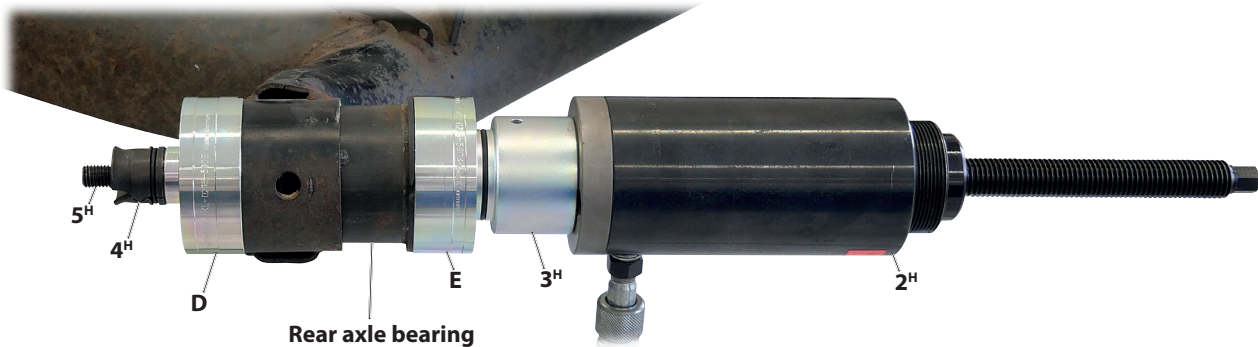
There is a risk of damaging the rear axle.

► **Be sure** to observe the correct installation position of the silent block according to the manufacturer's specifications!

**1.** Insert the rear axle bearing manually in the correct position on the axle according to the manufacturer's specifications.

EN

**Fig 8:** Correctly apply the silent block tool to the rear axle bearing



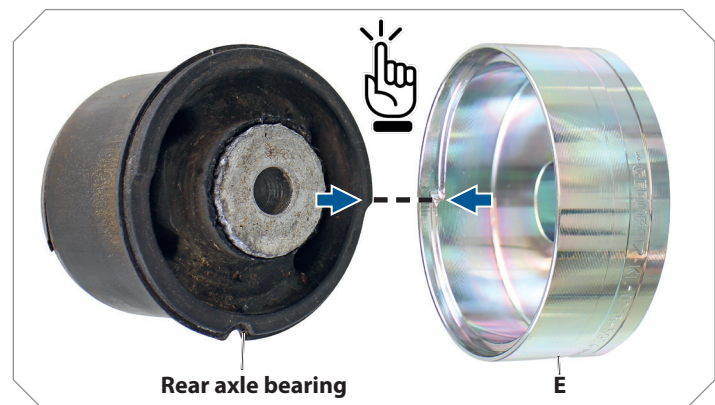
**CAUTION**

The rear axle bearing and the silent block tool can be damaged when forcing in the rear axle bearing!

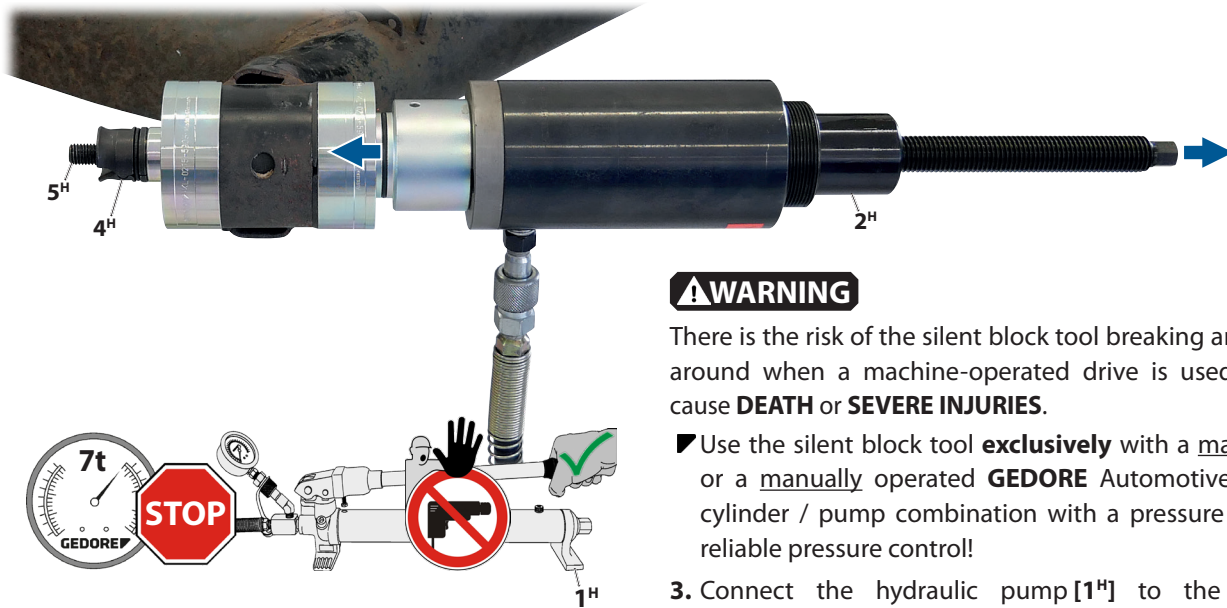
► The thrust piece **[D]** **must be** fitted to the axle to match the contour!

► Depending on the type of the rear axle bearing, the support sleeve **[E]** **must be** fitted to the rear axle bearing to match the contour!

**2.** Mount all the required components of the silent block tool in the correct position as shown on the rear axle bearing.



**Fig. 9:** Forcing the rear axle bearing into the axle.



## ⚠ WARNING

There is the risk of the silent block tool breaking and flinging around when a machine-operated drive is used. This can cause **DEATH** or **SEVERE INJURIES**.

► Use the silent block tool **exclusively** with a manual drive or a manually operated **GEDORE** Automotive hydraulic cylinder / pump combination with a pressure gauge for reliable pressure control!

3. Connect the hydraulic pump [1<sup>H</sup>] to the hydraulic cylinder [2<sup>H</sup>].

## ⚠ WARNING

When forcing in the rear axle bearing, the draw spindle [5<sup>H/M</sup>] may break, and the silent block tool may fling around or drop. This can cause **DEATH** or **SEVERE INJURIES**.

► **Never** exceed the draw spindle's [5<sup>H/M</sup>] **maximum load of 7 tonnes!**

► **Constantly** watch the pressure on the hydraulic pump's [1<sup>H</sup>] pressure gauge while forcing in.

► Before use, **always** secure the silent block tool against flinging around or falling off the vehicle, for example by using the safety retaining belt which is available as an *accessory* - **KL-0040-2590** or **KL-0040-2592!**

► While forcing in, **never** stand never in the axial extension of the draw spindle [5<sup>H/M</sup>].

4. While operating the hydraulic pump [1<sup>H</sup>], watch the pressure on the pressure gauge and force in the rear axle bearing according to the manufacturer's instructions.

ⓘ The maximum stroke of the hydraulic cylinder [2<sup>H</sup>] is 50mm! As soon as it is reached: Interrupt the forcing process, relieve the pressure at the hydraulic pump [1<sup>H</sup>], re-tighten the clamping nut [4<sup>H</sup>] until it is fully applied, and continue the forcing process.

## 5. CARE / STORAGE

### CAUTION

Improper care and storage can cause damage to the silent block tool. **Never** immerse the silent block tool in water, solvents, or other cleaning liquids. After use, clean all parts **only** with a dry and clean cleaning cloth. To protect against corrosion, rub all metal parts with a tool care oil or wax. Store the silent block tool and the operating instructions at a dry and clean place.

## 6. REPAIR

### ⚠ WARNING

For safety reasons, ensure that a damaged silent block tool is no longer used! Professional inspection and repair may only be carried out by specially trained experts from **GEDORE Automotive GmbH**. Improper repair can result in **DEATH** or **SEVERE INJURIES**.

## 7. ENVIRONMENTALLY COMPLIANT DISPOSAL

Dispose of the silent block tool and its packaging material in an environmentally compatible way in accordance with the legal requirements. If necessary, ask your local authorities about environmentally friendly disposal options.



A series of horizontal lines forming a ruled writing area for notes or text.

## GEDORE-Werkzeugfabrik GmbH & Co. KG

Remscheider Straße 149  
42899 - Remscheid  
Postfach 120361  
47873 Remscheid  
GERMANY

### Vertrieb DEUTSCHLAND

☎ +49 (0) 2191 / 596-0  
☎ +49 (0) 2191 / 596-230  
✉ info@gedore.com  
🌐 www.gedore.com

### Sales INTERNATIONAL

☎ +49 (0) 2191 / 596-910  
☎ +49 (0) 2191 / 596-911  
✉ info@gedore.com  
🌐 www.gedore.com

## GEDORE TOOLS, INC.

Only for USA, Canada & Mexico  
Sólo para EE.UU., Canadá y México  
Seulement pour les USA, le Canada et le Mexique  
7187 Bryhawke Circle, Suite 700, North Charleston, SC 29418, USA

☎ +1-843 / 225 50 15  
☎ +1-843 / 225 50 20  
✉ info@gedoretools.com  
🌐 www.gedoretools.com

Worldwide GEDORE service centers and offices are listed on the Internet at: [www.gedore.com](http://www.gedore.com)

## GEDORE Automotive GmbH

Breslauer Straße 41  
78166 - Donaueschingen  
Postfach 1329  
78154 Donaueschingen  
GERMANY

### Vertrieb DEUTSCHLAND

☎ +49 (0) 771 / 8 32 23-0  
☎ +49 (0) 771 / 8 32 23-90  
✉ info.gam@gedore.com  
🌐 gedore-automotive.com



[www.gedore-automotive.com](http://www.gedore-automotive.com)